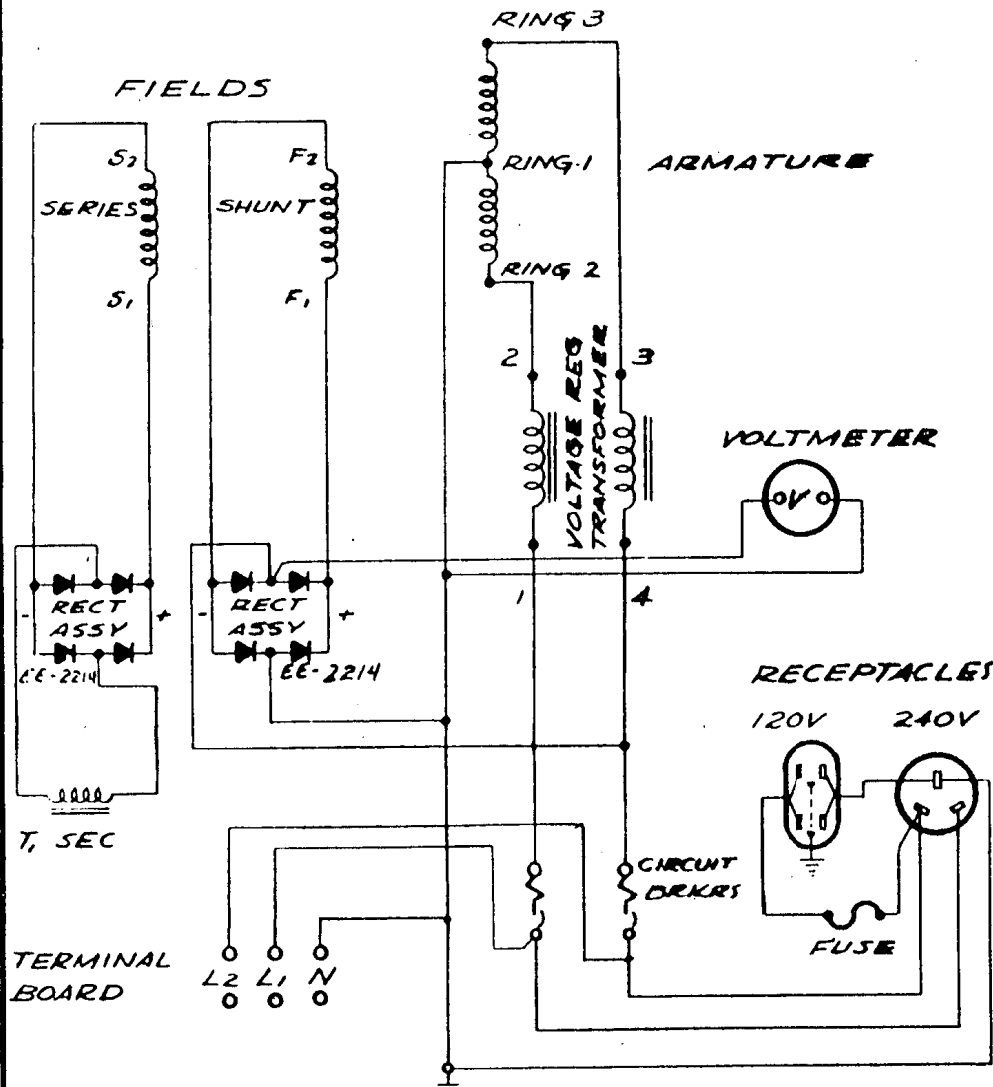
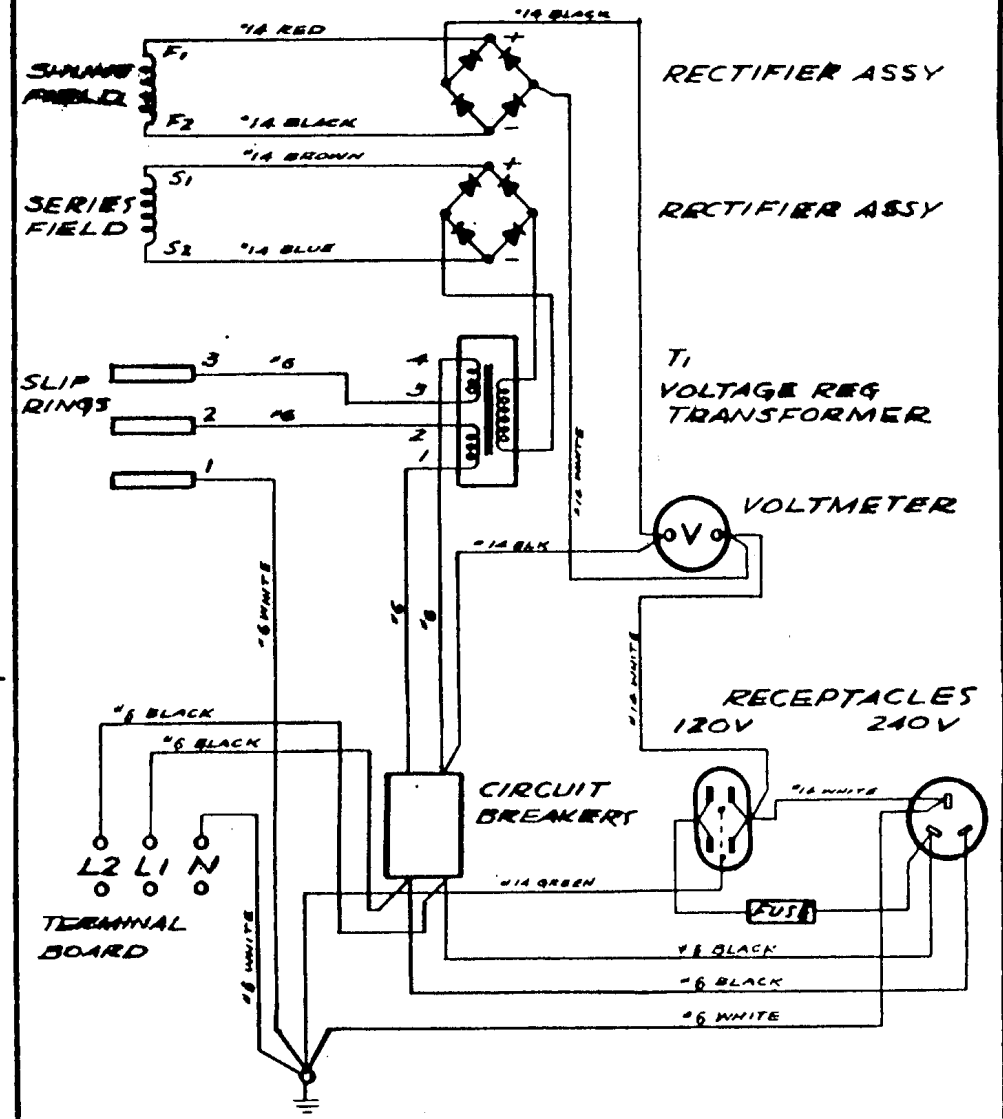


SCHEMATIC WIRING



PICTORIAL WIRING



USED ON SERIAL NOS. CC-822, CC-823, CC-869 & CC-870

L	GEN REVISION OF PICTORIAL WIRING DIA	12-2-74	E.L.J.	T.C.G.	12-3-74
C	GEN REVISION OF PICTORIAL WIRING DIA	2-19-74	T.C.G.		
B	ADDED GRD TO DUPLX PICTORIAL DIA	1-19-74	T.C.G.		
A	SCHEMATIC DIAG SHUNT FLD RECT WAS TO L ₁ & N	1-18-72	T.C.G.		
CHANGE	WAS ORIGINALLY	DATE	CHK'D	CHG. REQUEST	CHANG

F	ADDED EE-2213	6-18-74	CS		
E	REMOVED THE THYRECTOR	3-17-76	KH	36036	
	WAS	DATE	CHK'D		
	NO. REQ'D.	MICROFILM DATA		JUN 27 1974	

WIRING DIAGRAM	
SCALE ~	MODEL NO.
DATE 9-16-71	PART NO.
DWR T.C.G.	CHK'D

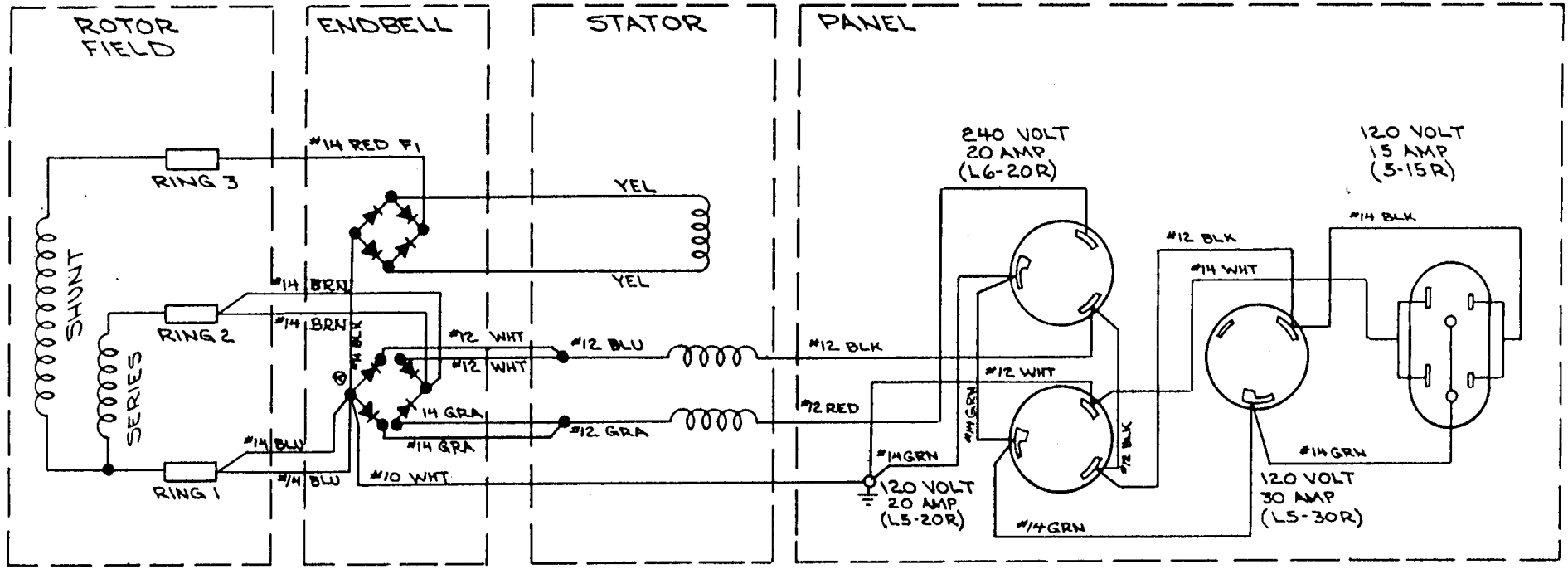
TOLERANCE ON DIMENSIONS NOT OTHERWISE SPECIFIED

DECIMAL	±
FRACTIONAL	±
ANGULAR	±

REMOVE ALL BURRS
BREAK ALL SHARP MACHINED EDGES

MATERIAL _____

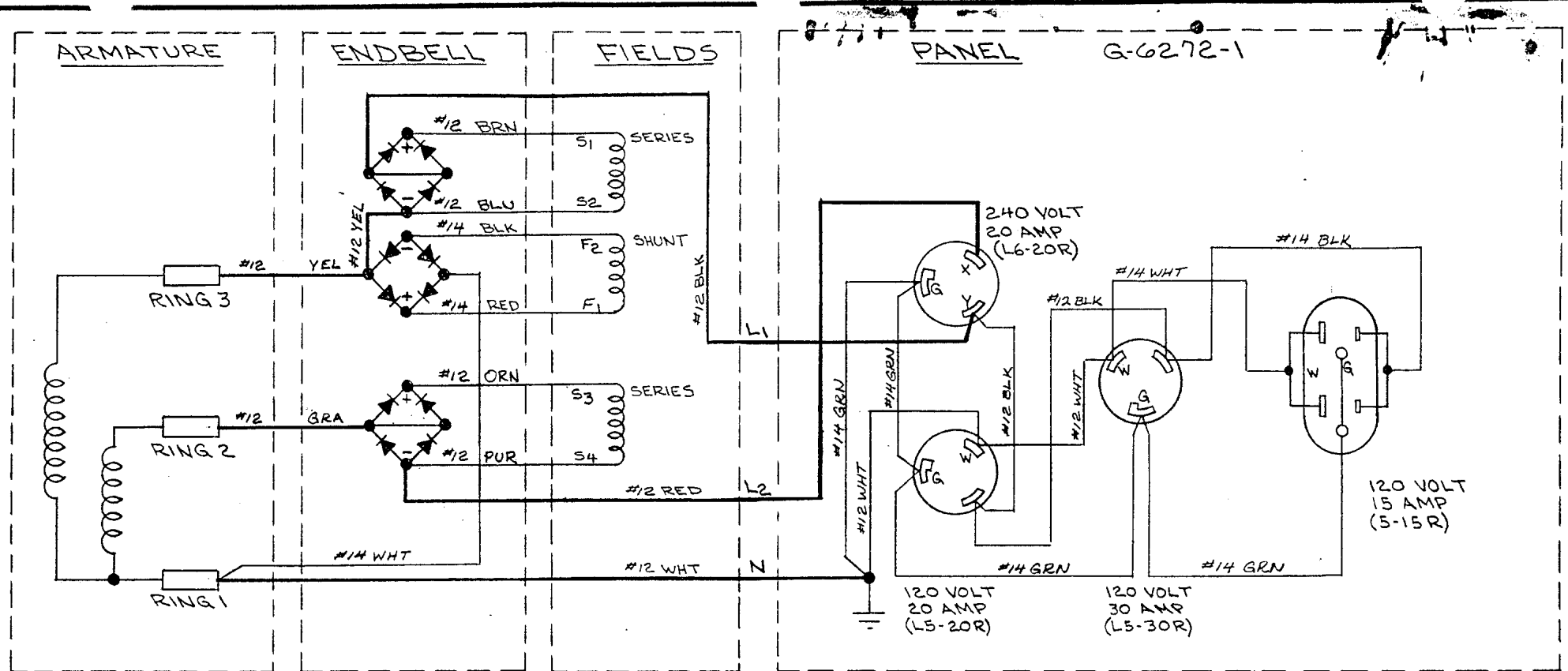
WINPOWER MFG. CO.
NEWTON, IOWA



RECEPTACLES AS VIEWED FROM FRONT

A	ADDED CONNECTION	8-12-74	SF.	RLT			
CHANGE	WAS ORIGINALLY	DATE	CHK'D	CHG. REQUEST			
TOLERANCE ON DIMENSIONS NOT OTHERWISE SPECIFIED			DECIMAL ±	REMOVE ALL BURRS BREAK ALL SHARP MACHINED EDGES	NO. REQ'D.	MICROFILM DATA	
			FRACTIONAL ±				
			ANGULAR ±				
MATERIAL _____							

CIRCUIT DIAGRAM	
SCALE ~	MODEL NO.
DATE 7-25-74	PART NO. Z-2342-1
DWN RLT	CHK'D
WINPOWER CORPORATION NEWTON, IOWA 50208	



RECEPTACLES SHOWN AS VIEWED FROM FRONT

CHANGE	WAS ORIGINALLY	DATE	CHK'D	CHG. REQUEST	NO. REQ'D.	MICROFILM DATA
						JUN 27 1974
TOLERANCE ON DIMENSIONS NOT OTHERWISE SPECIFIED				REMOVE ALL BURRS BREAK ALL SHARP MACHINED EDGES	MATERIAL _____	
DECIMAL ± FRACTIONAL ± ANGULAR ±						

CIRCUIT DIAGRAM	
SCALE NONE	MODEL NO.
DATE 5-16-74	PART NO. IE-9381-1
DWN RBT	CHK'D
WINPOWER MFG. CO. NEWTON, IOWA	