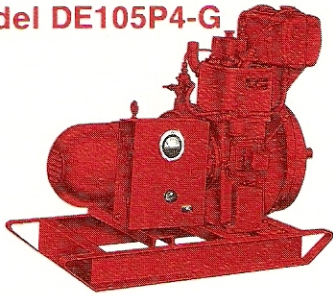


**AIR-COOLED
DIESEL POWERED
ALTERNATORS 1800 RPM
1,500 to 20,000 Watts
60 Hz. A.C. and D.C.**

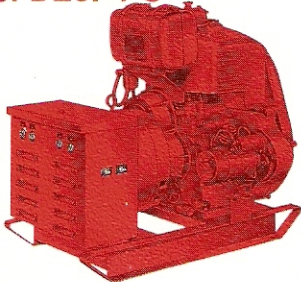
Model DE105P4-G



Marine Battery Charger

Generator: Revolving armature, 4 pole, saturated fields, self-excited, electric start with cranking winding.
Engine: Petter PAZ-1, 3 H.P., 4 cycle single cylinder.
Standard equipment: Control box, rheostate, ammeter, reverse current diode, Battery terminals, start switch, fuel tank, muffler and fuses.

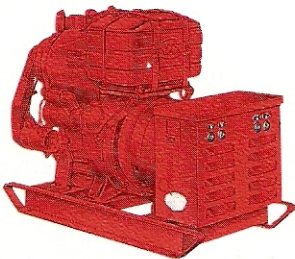
Model DE6P4-C



Long life - High Performance

Alternator: Rotating Armature, 4 pole, static excitation, 5% voltage regulation, drip proof construction.
Engine: Petter PJ-1, 10 H.P., 4 cycle single cylinder.
Standard Equipment: Control box, main line circuit breaker, load terminals, receptacles, grounding stud, fuel tank, muffler, start switch.

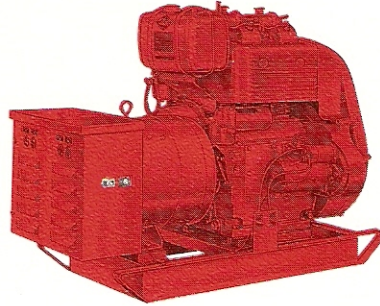
Model DE705D-C



Economical - Diesel Performance

Alternator: Rotating armature, 4 pole, static excitation, 5% voltage regulation, drip proof construction.
Engine: VM, SU101, 14.1 H.P. 4 cycle, single cylinder.
Standard Equipment: Control box, main line circuit breaker, load terminals, grounding terminal, receptacle panel, electric start switch, emergency hand crank, tool kit, fuel tank.

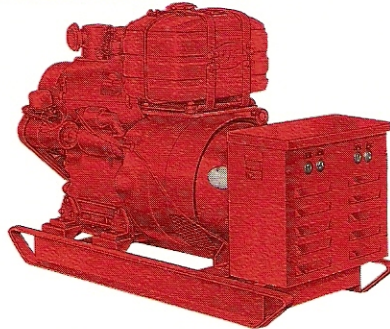
Model DE12P4-C



Dependable - Diesel Power

Alternator: Rotating armature, 4 pole, static excitation, 5% voltage regulation, drip proof construction.
Engine: Petter PJ-2, 20 H.P. 4 cycle, two cylinder.
Standard equipment: control box, main line circuit breaker, load terminals, ground terminal, receptacle panel, electric start switch, fuel tank, muffler.

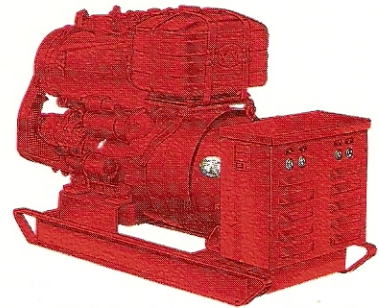
Model DE12D4-C



Rugged - Diesel power

Alternator: Rotating Armature, 4 pole, static excitation, 5% voltage regulation, drip proof construction.
Engine: VM, SV295, 22 H.P. 4 cycle, two cylinder.
Standard Equipment: Control box, main line circuit breaker, load terminals, grounding terminal, receptacle panel, electric start switch, emergency hand crank, tool kit, fuel tank.

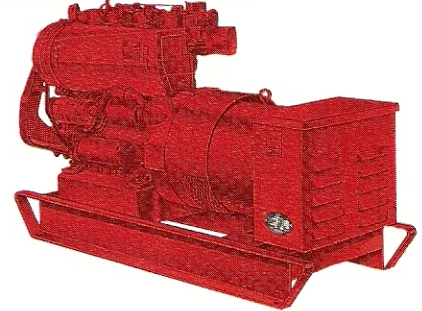
Model DE15D4-C



High performance - Diesel

Alternator: Rotating Armature, 4 pole, static excitation, 5% voltage regulation, drip proof construction.
Engine: VM, SU102, 28.2 H.P., 4 cycle, two cylinder.
Standard Equipment: control box, main line circuit breaker, load terminals, grounding terminal, receptacle panel, electric start switch, emergency hand crank, tool kit, fuel tank.

Model DR20D4-C



Remote start - Diesel

Alternator: Rotating Armature, 4 pole, static excitation, 5% voltage regulation, drip proof construction.
Engine: VM, SU103, 42.8 H.P., 4 cycle, three cylinder.
Standard Equipment: Control box, main line circuit breaker, load terminals, grounding terminal, receptacle panel, electric start switch, remote start terminals, emergency hand crank, tool kit, fuel pump.

MODEL SELECTION

1.5 KW — DIRECT CURRENT — 1800 R.P.M. — AIR COOLED

MODEL	WATTS	VOLTS	USE	WIRE	ENGINE	STARTING
DE105P4-C	1500	32/40	Battery Charging	2	PAZ1	Electric

MODEL SELECTION

60 CYCLE — 1800 R.P.M. — AIR COOLED

MODEL	WATTS	VOLTS	AMPS	PHASE	WIRE	ENGINE	STARTING
DE6P4-C	6000	120/240	25	1	3	PJ1	Electric
DE705D4-C	7500	120/240	31.3	1	3	SU101	Electric
DE12P4-C	12000	120/240	50	1	3	PJ2	Electric
DE12P4-D	12000	120/208	41.6	3	4	PJ2	Electric
DE12D4-C	12000	120/240	50	1	3	SV295	Electric
DE12D4-D	12000	120/208	41.6	3	4	SV295	Electric
DE15D4-C	15,000	120/240	62.5	1	3	SU102	Electric
DE15D4-D	15,000	120/208	52	3	4	SU102	Electric
DR20D4-C	20,000	120/240	83.3	1	3	SU103	Remote
DR20D4-D	20,000	120/208	69.5	3	4	SU103	Remote
DR20P4-C	20000	120/240	83.3	1	3	PJ3	Remote
DR20P4-D	20000	120/208	69.5	3	4	PJ3	Remote