

WINPOWER CORPORATION

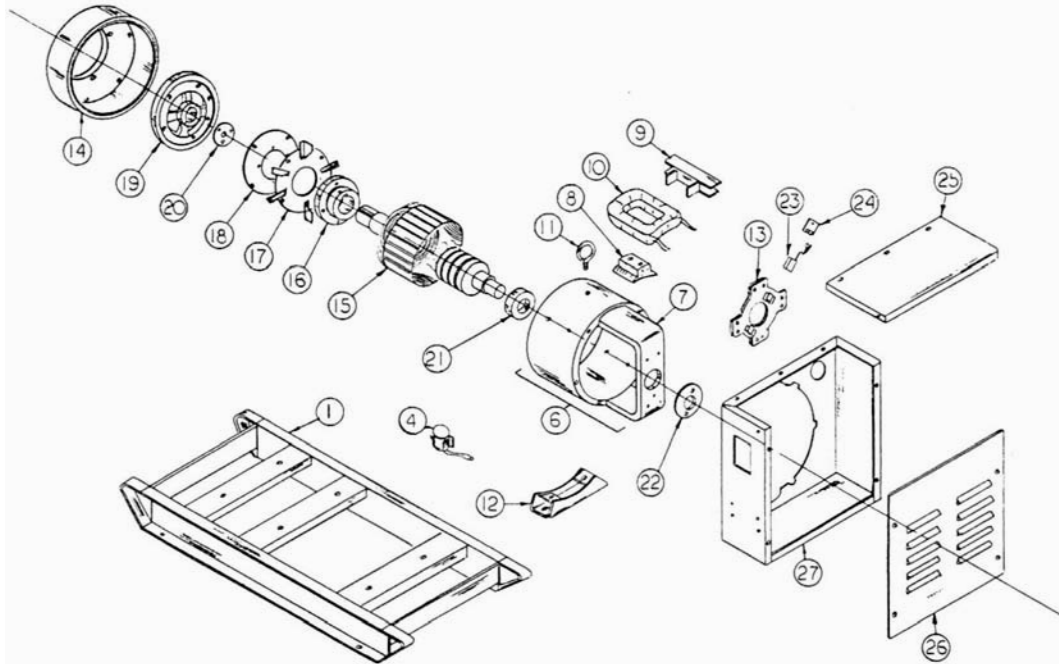
GASOLINE ELECTRIC PLANT

10,000 WATTS* A.C. 1800 R.P.M.

PARTS LIST

DATE RELEASED

MARCH 11, 1977

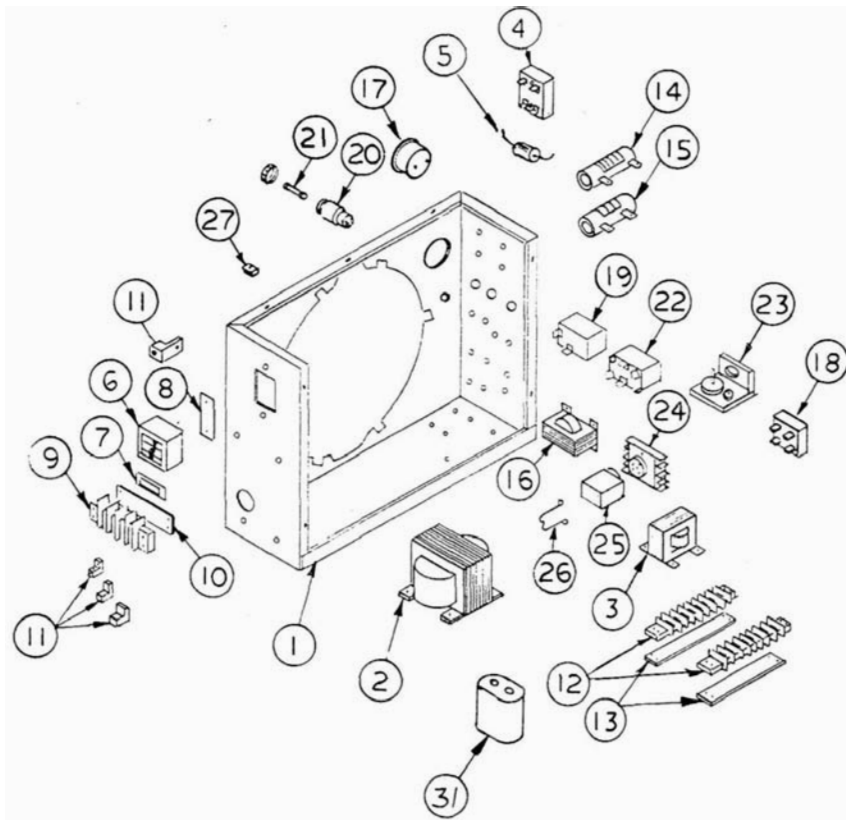


E-8558

GR10W4-C, D, J, L

REF. NO.	PART DESCRIPTION	Model GR10W4-C		Model GR10W4-D		Model GR10W4-J		Model GR10W4-L	
		Type 1	REQ'D UNIT	Type 1	REQ'D UNIT	Type 1	REQ'D UNIT	Type 1	REQ'D UNIT
Not Shown	Engine Wisc. VH4D	EC-12501	1						
1	Skid	G-5105	1						
2	Start Contactor Assembly	Not Appl.							
3	Bracket	Not Appl.							
4	Solenoid	EE-1201	1						
5	Battery Cables	Not Appl.							
6	Field Frame Assembly	G-5250	1	G-5250-1	1	G-5250-1	1	G-5250-13	1
7	Field Frame	G-5247	1						
8	Field Pole	G-4309	4						
9	Coil Shield	J-460	8						
10	Field Coil	H-917	4	H-970	4	H-970	4	H-1165	4
11	Lift Ring	S-859	1						
12	Generator Support	G-5225	1						
13	Brush Gear Assembly	G-5487	1	G-5459	1	G-5459	1	G-5454-1	1
14	Drive End Bell	I-838	1						
15	Armature Assembly	G-5246	1	G-4766-8	1	G-4766-64	1	G-4766-74	1
16	Coupling Hub	I-794	1						
17	Fan Assembly	G-5249	1						
18	Coupling Disc.	S-4872	1						
19	Adapter Coupling	I-793	1						
20	Retainer Washer	S-5287	1						
21	Bearing	D-8	1						
22	Bearing Retainer	W-43	1						
23	Brush	Y-51	6	Y-51	8	Y-51	8	Y-51	8
24	Brush Spring	G-3422	6	G-3422	8	G-3422	8	G-3422	8
25	Panel Top	S-7623	1	S-7623	1	S-6927	1	S-6927	1
26	Panel Front	S-6103-7	1						
27	Panel Back Assembly	G-5228-60	1	G-5228-61	1	G-5228-69	1	G-5228-76	1
		Wiring Dia. IC6132-4		Wiring Dia. IC-6180		Wiring Dia. IC-6357		Wiring Dia. IC-6820	
PARTS DRAWING IE-8558		Last Revision Let.C		Last Revision Let.K		Last Revision Let.H		Last Revision Let. E	

NOTE: Part Numbers And Quantity Are The Same In All Columns But The Exceptions.



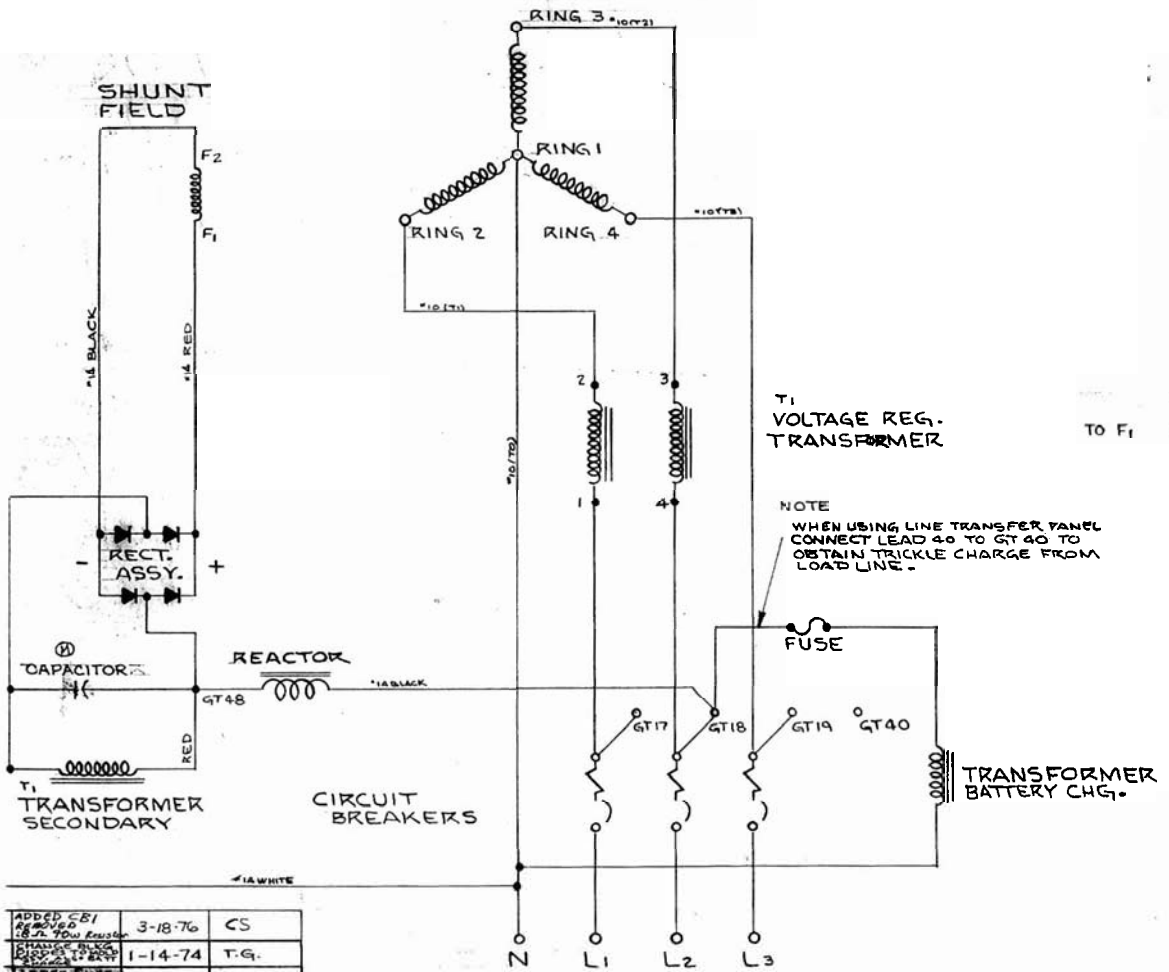
E - 8563

REF. NO.	PART DESCRIPTION	MODEL GR10W4-C		MODEL GR10W4-D		MODEL GR10W4-J		MODEL GR10W4-L	
		PART NO.	REQ'D UNIT	PART NO.	REQ'D UNIT	PART NO.	REQ'D UNIT	PART NO.	REQ'D UNIT
1	Panel Back Assembly Comp.	G-5228-60	1	G-5228-61	1	G-5228-69	1	G-5228-76	1
2	Panel Back	G-5838-3	1	G-5838-3	1	G-5838-3	1	G-6490	1
3	Transformer	EE-972	1	EE-1981	1	EE-972	1	EE-2019	1
4	Choke	EE-1950-1	1	EE-1950-1	1	EE-1950-1	1	EE-2020	1
5	Rectifier Assembly	EE-2214	2						
6	Varistor	Not Appl.							
7	Circuit Breaker	EE-1805	1	EE-858	1	EE-858	1	EE-1879	1
8	Filler Plate	EE-779	1	Not Appl.		Not Appl.		Not Appl.	
9	Mounting Plate	S-5027-1	1	S-5027-1	1	S-5027-1	1	Not Appl.	
10	Terminal Board	Not Appl.		EE-658	1	EE-658	1	EE-658	1
11	Marker Strip	Not Appl.		EE-658-1	1	EE-658-1	1	EE-658-1	1
12	Lug	EE-1671	3	EE-1671	4	EE-1671	4	EE-1671	1
13	Terminal Board	EE-653	2						
14	Marker Strip	EE-653-2	2						
15	Resistor	R-107							
16	Circuit Breaker 12 Volt	EE-1877							
17	Transformer Battery Charger	EE-2271	1	EE-2271	1	EE-2271	1	EE-2018-1	1
18	Ammeter, Battery Charger	AM-100	1						
19	Rectifier Assembly Battery Charger	EE-2214	1						
20	Switch, Hi-Lo Battery	EE-168	1						
21	Fuse Holder	EE-425	1						
22	Fuse	EE-441	1						
23	Switch, Start Stop	EE-166	1						
24	Rectifier Assembly	G-5183-1	1						
25	Relay Base	EE-1207-1	1						
26	Hold Down Spring	EE-1207-2	1						
27	Relay	EE-1207-3	1						
28	Tinnerman	4957	7						
29	Fuse	EE-441	1						
30	Fuse Block	EE-416	1						
31	Resistor	R-95	1						
Not Shown	Capacitor	Not Appl.		EE-1551	1	Not Appl.		EE-1548	1

PARTS DRAWING IE-8563

NOTE: Part Numbers And Quantity Are The Same In All Columns But The Exceptions.

ARMATURE



T1 VOLTAGE REG. TRANSFORMER

NOTE
WHEN USING LINE TRANSFER PANEL
CONNECT LEAD 40 TO GT 40 TO
OBTAIN TRICKLE CHARGE FROM
LOAD LINE.

TRANSFORMER BATTERY CHG.

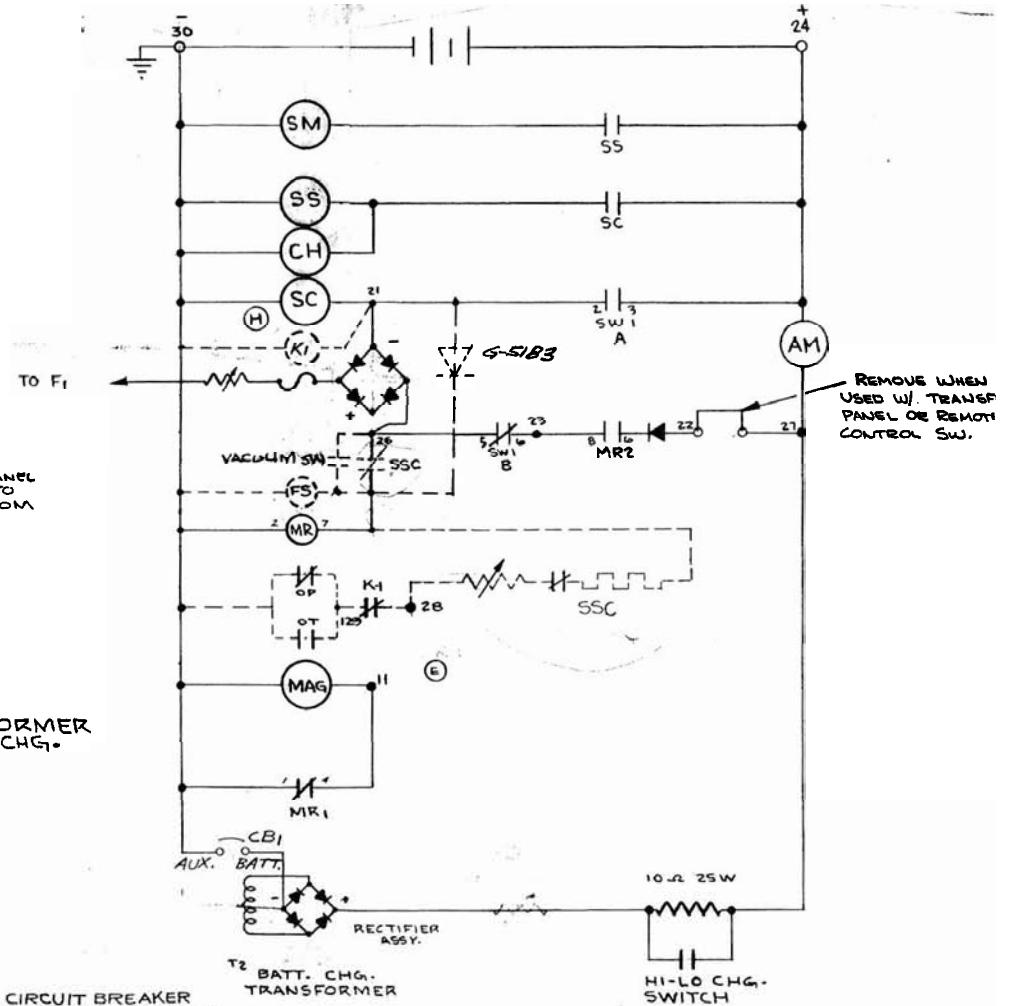
ADDED CBI REMOVE 28.75 70W FUSE	3-18-76	CS	
REMOVED BLACK WIRE FROM CBI	1-14-74	T.G.	
ADDED FUSE RESISTOR	3-26-73	F.C.	
ADDED 0.01 1/2 WATT	5-2-72	F.S.C.	
FSC WAS BEING USED TO MISC	5-27-71	T.C.G.	
REMOVED 28.75 70W FUSE	11-6-70	T.C.G.	
ADDED SSC	11-5-70	T.C.G.	
REMOVED CHARGE	8-6-70	JFP	
ADDED K1 RELAY	7-20-70	T.C.G.	P-1865
ADDED DIODE FROM P1 TO S1	5-25-70	T.G.	

O	ADD VACUUM SW & DIODE	5-22-78	M.E.	CN-819-78
N	ADD SSC	11-8-77	SWF	CN-77-339
M	REMOVED THYRISTOR ADDED CAPACITOR	5/14/76		SWF
L	REMOVED SSC	4-2-76		CS

ANCE ON IONS NOT WISE SPECIFIED } DECIMAL ± FRACTIONAL ± ANGULAR ± REMOVE ALL BURRS BREAK ALL SHARP MACHINED EDGES

NO. REQ'D. MATERIAL MICROFILM DATA JUL 1 0 1970 JUL 2 0 1977

- CBI CIRCUIT BREAKER
- AM BATT. CHG. AMMETER
- CH FUEL SOLENOID (OPTIONAL)
- F MAGNETO
- M MAGNETO RELAY
- MR LOW-OIL SHUTDOWN (OPTIONAL)
- OP HIGH TEMP SHUTDOWN (OPTIONAL)
- OT START CONTACTOR
- SC START MOTOR
- SS START MOTOR SOLENOID
- SW1 START SWITCH
- K1 RELAY SAFETY DEVICE (WHEN TRANS. PANEL NOT SUPPLIED SEE 440-5)
- SS2 SAFETY DEVICE (RICK)



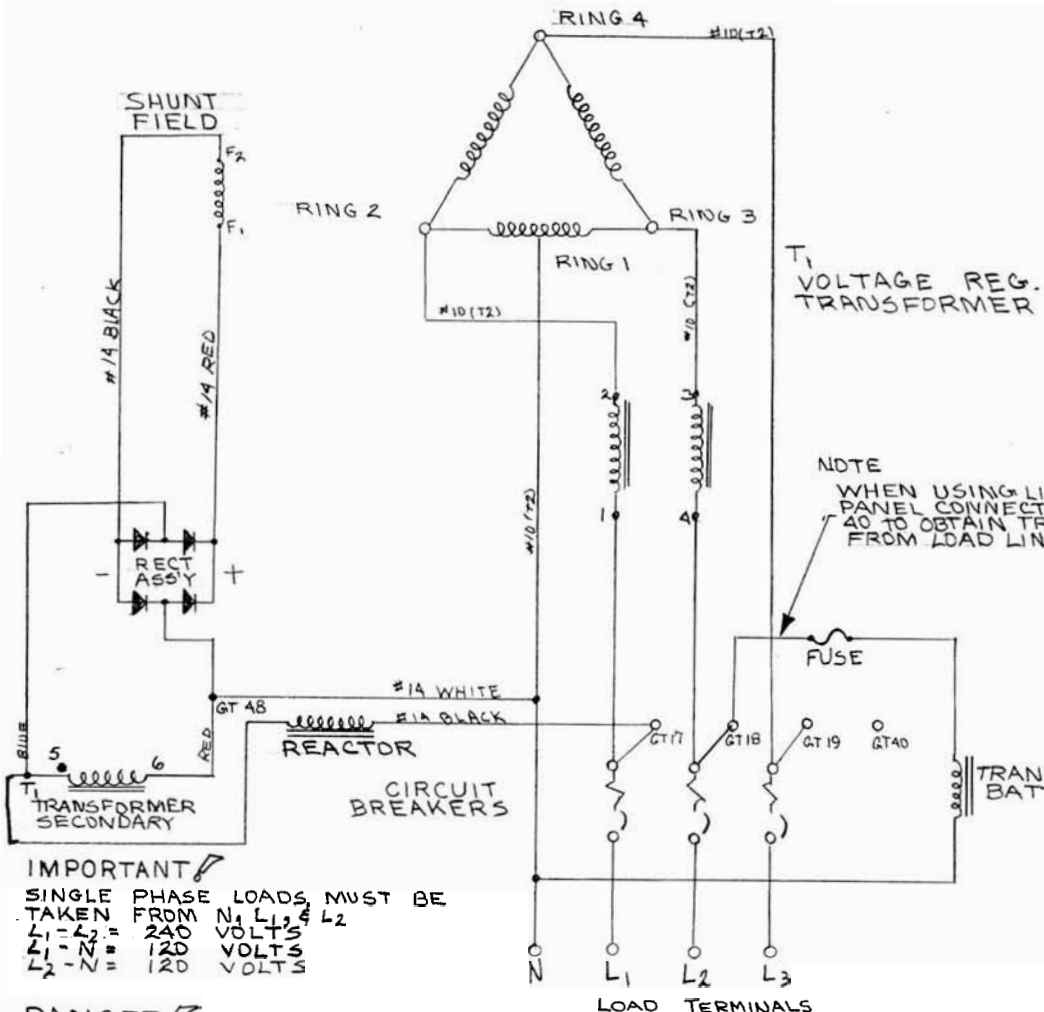
REMOVE WHEN USED W/ TRANSF PANEL OR REMOT CONTROL SW.

Z-2094

SWITCH LEGEND		WIRING DIAGRAM	
SW1	START MOM RUN	SCALE	MODEL NO.
A	0-1-0 1	DATE	10-1-69
B	0-1-0 1 x	DWN	3FP
		PART NO.	IC-618
		CHK'D	
WINPOWER MFG. CO. NEWTON, IOWA			

IC-6180

AKMAIURE



IMPORTANT
 SINGLE PHASE LOADS MUST BE TAKEN FROM N, L1, L2, L3
 L1 - L2 = 240 VOLTS
 L1 - N = 120 VOLTS
 L2 - N = 120 VOLTS

DANGER
 VOLTAGE FROM "N" TO "L3" IS 200V

CHANGE	WAS ORIGINALLY	DATE	CHK'D	CHG. REQUEST	NO. REQ'D.	MICROFILM DATA
1	REMOVED THYRECTOR	3-11-77	KH			
2	MOVED WIRE	10-29-76	KH	N.R.		
F	ADDED CB1 & REPAIRED 40W RESISTOR	4-12-76	SWF			
E	REDRAWN	4-15-79	SF.			
						JUN 27 1974

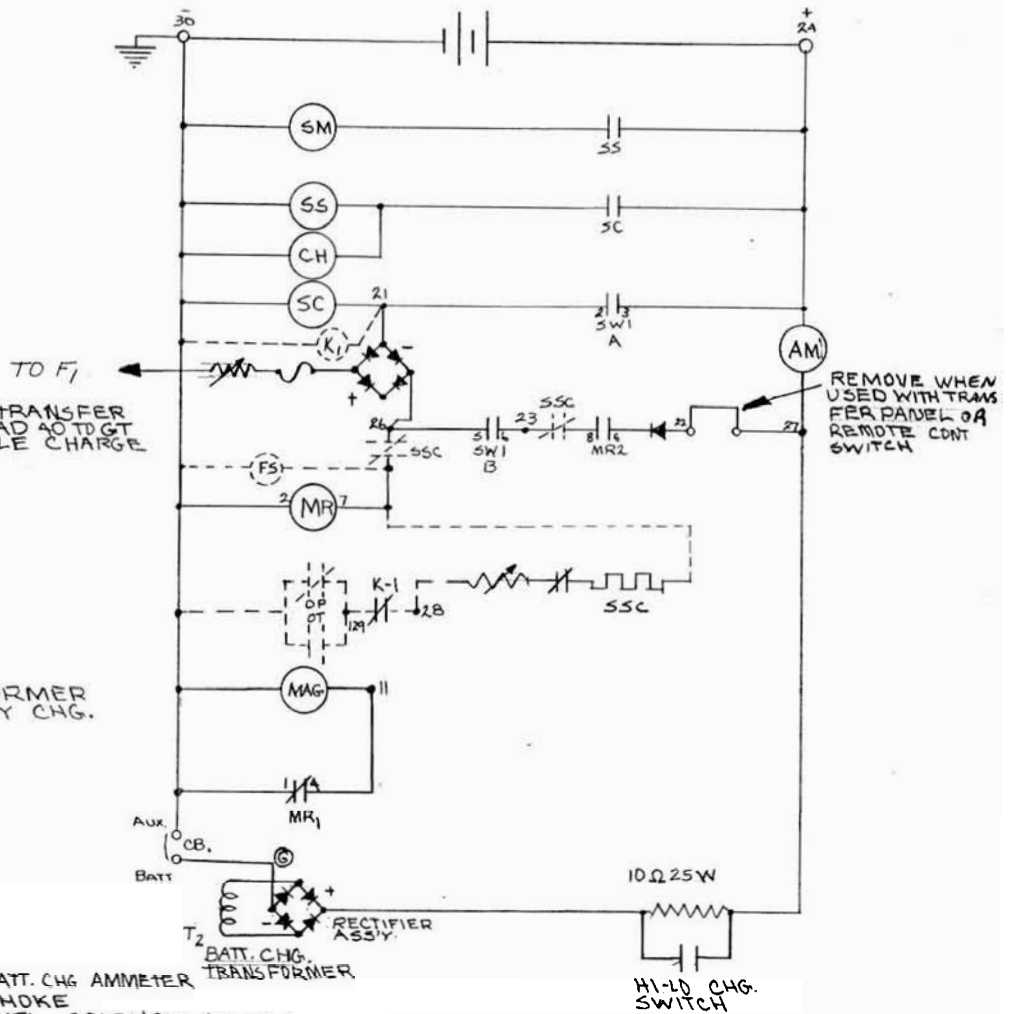
PERMANCE ON DIMENSIONS NOT OTHERWISE SPECIFIED

DECIMAL ±
 FRACTIONAL ±
 ANGULAR ±

REMOVE ALL BURRS
 BREAK ALL SHARP MACHINED EDGES

MATERIAL

- AM BATT. CHG. AMMETER
 - CH CHOKE
 - FS FUEL SOLENOID (OPTIONAL)
 - MAG MAGNETO
 - MR MAGNETO RELAY
 - OP LOW-OIL SHUTDOWN (OPTIONAL)
 - OT HIGH TEMP SHUTDOWN (OPTIONAL)
 - SC START CONTACTOR
 - SM START MOTOR
 - SS START MOTOR SOLENOID
 - SW1 START SWITCH
 - K-1 RELAY SAFETY DEVICE
 - SSC SAFETY DEVICE BRKR.
- WHEN TRANS PANEL NOT SUPP. G-3440-3



SWITCH LEGEND

SW1	START	RUN
A0	X	
B0	X	X

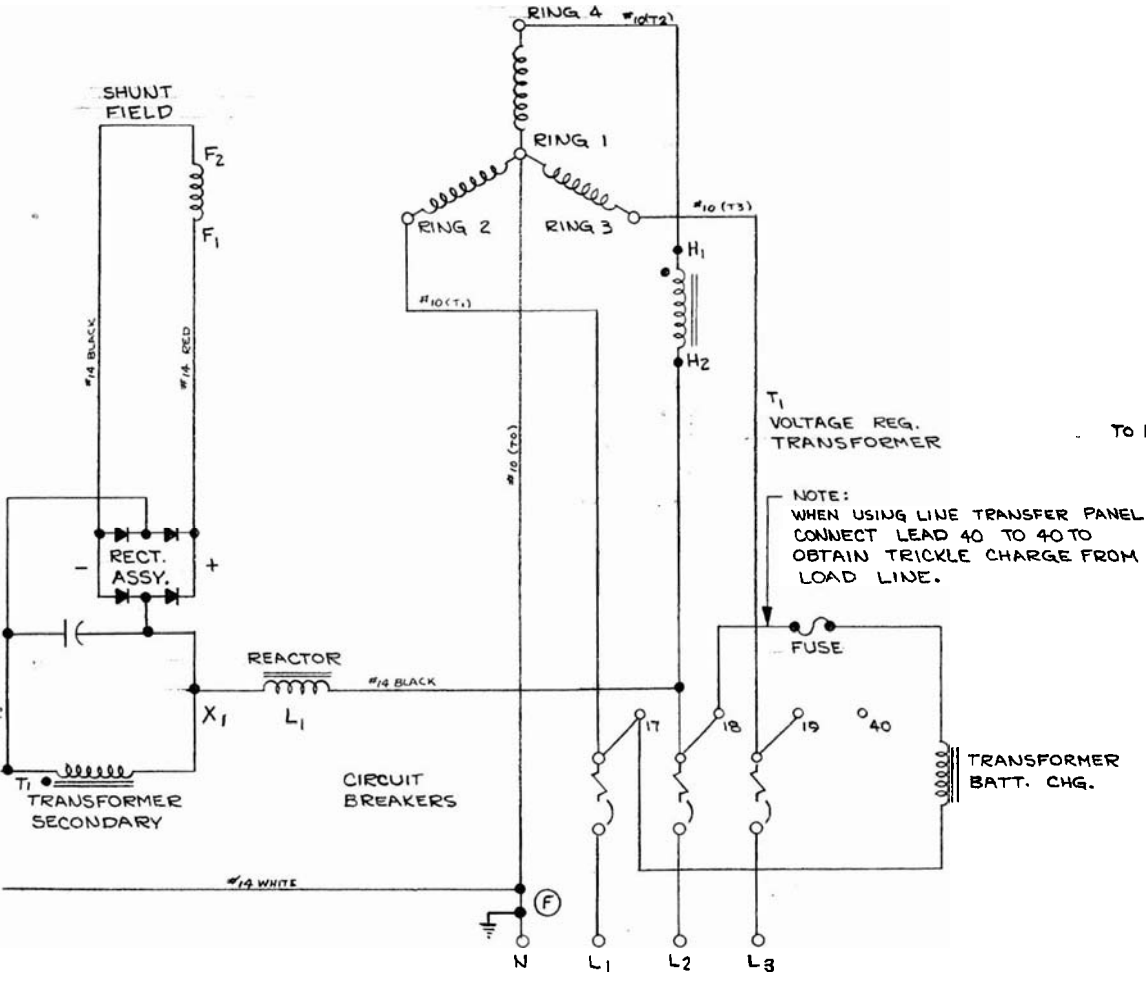
Waw Z-2231

WIRING DIAGRAM

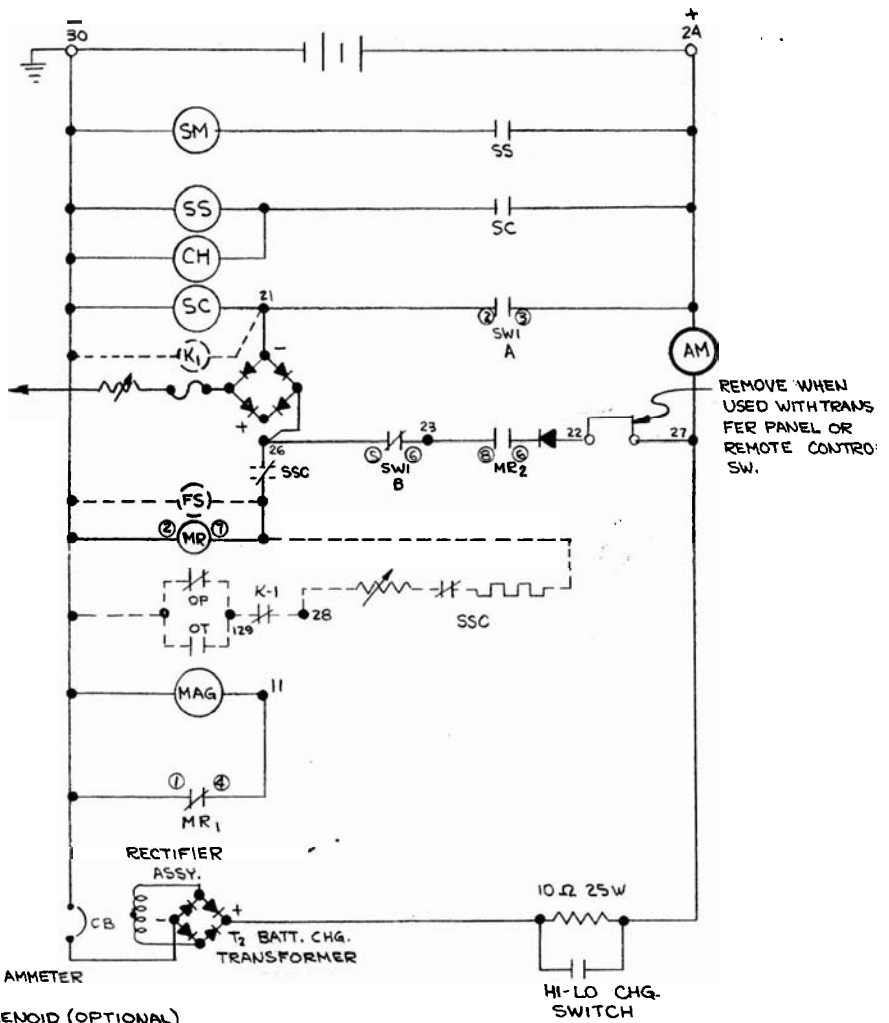
SCALE	MODEL NO.
DATE 4-15-74	PART NO. IC-62
DWN S.F.	CHK'D T.C.G.

WINPOWER MFG. CO.
 NEWTON, IOWA

ARMATURE



NOTE:
WHEN USING LINE TRANSFER PANEL
CONNECT LEAD 40 TO 40 TO
OBTAIN TRICKLE CHARGE FROM
LOAD LINE.



REMOVE WHEN USED WITH TRANSFER PANEL OR REMOTE CONTROL SW.

ADD. GROUND	11-7-78	ELJ	78-1420
REMOVED VARIATOR	3-11-77	KH	
DELETE RES. ADD CB	2-11-77	L.R.S.	
REMOVED H ₁ & 4	9-17-76	SWF	
RINGS 3 & 4 WERE REVERSED	4-26-76	SWF	
CONNECTED TO NEUTRAL LINE	1-30-76	SWF	Reddy
WAS ORIGINALLY	DATE	CHK'D.	CHG. REQUEST

ANCE ON SIGNS NOT (WISE SPECIFIED)	DECIMAL ± FRACTIONAL ± ANGULAR ±	REMOVE ALL BURRS BREAK ALL SHARP MACHINED EDGES	NO. REQ'D.	MICROFILM DATA
MATERIAL				

- AM BATT. CHG. AMMETER
 - CH CHOKE
 - FS FUEL SOLENOID (OPTIONAL)
 - MAG MAGNETO
 - MR MAGNETO RELAY
 - OP LOW-OIL SHUTDOWN (OPTIONAL)
 - OT HIGH TEMP. SHUTDOWN (OPTIONAL)
 - SC START CONTACTOR
 - SM START MOTOR
 - SS START MOTOR SOLENOID
 - SW₁ START SWITCH
 - K₁ RELAY SAFETY DEVICE
 - SSC SAFETY DEVICE BRKR
- WHEN TRANS. PANEL NOT SUPPLIED Q-6440-5

SWITCH LEGEND	
SW ₁	START MOM RUN
A	— — — X
B	— — —

WIRING DIAGRAM	
SCALE	NONE
DATE	12-19-75
DOWN	SWF
MODEL NO.	IC-6820
PART NO.	IC-6820
CHK'D.	DEL
WIPower CORPORATION NEWTON, IOWA 50208	

IC-6820