

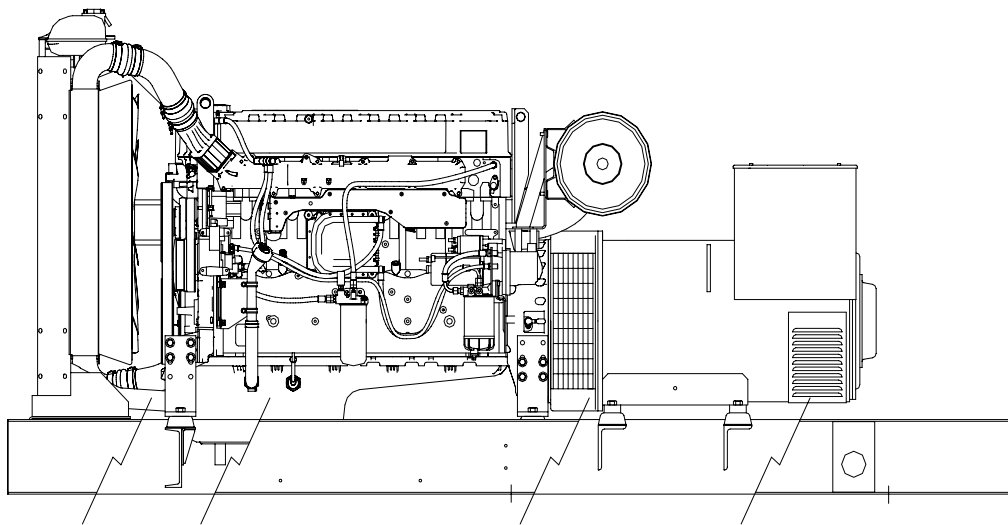
WINPOWER

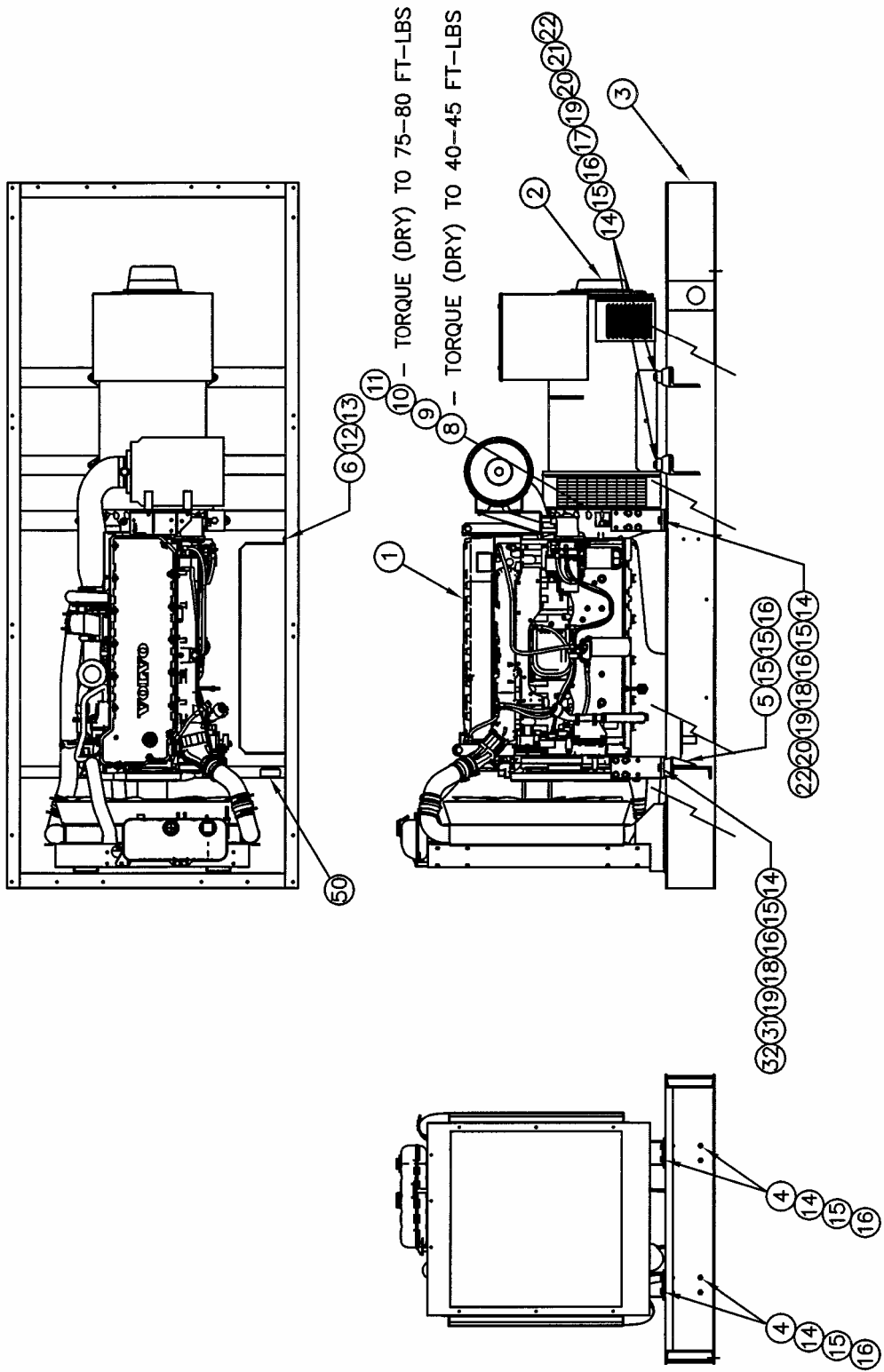
*A Division of **DTE** Dyna Technology Inc*

PARTS LIST

DR400V4

WITH BASLER DGC-2020 CONTROL





ENGINE/GENERATOR ASSEMBLY

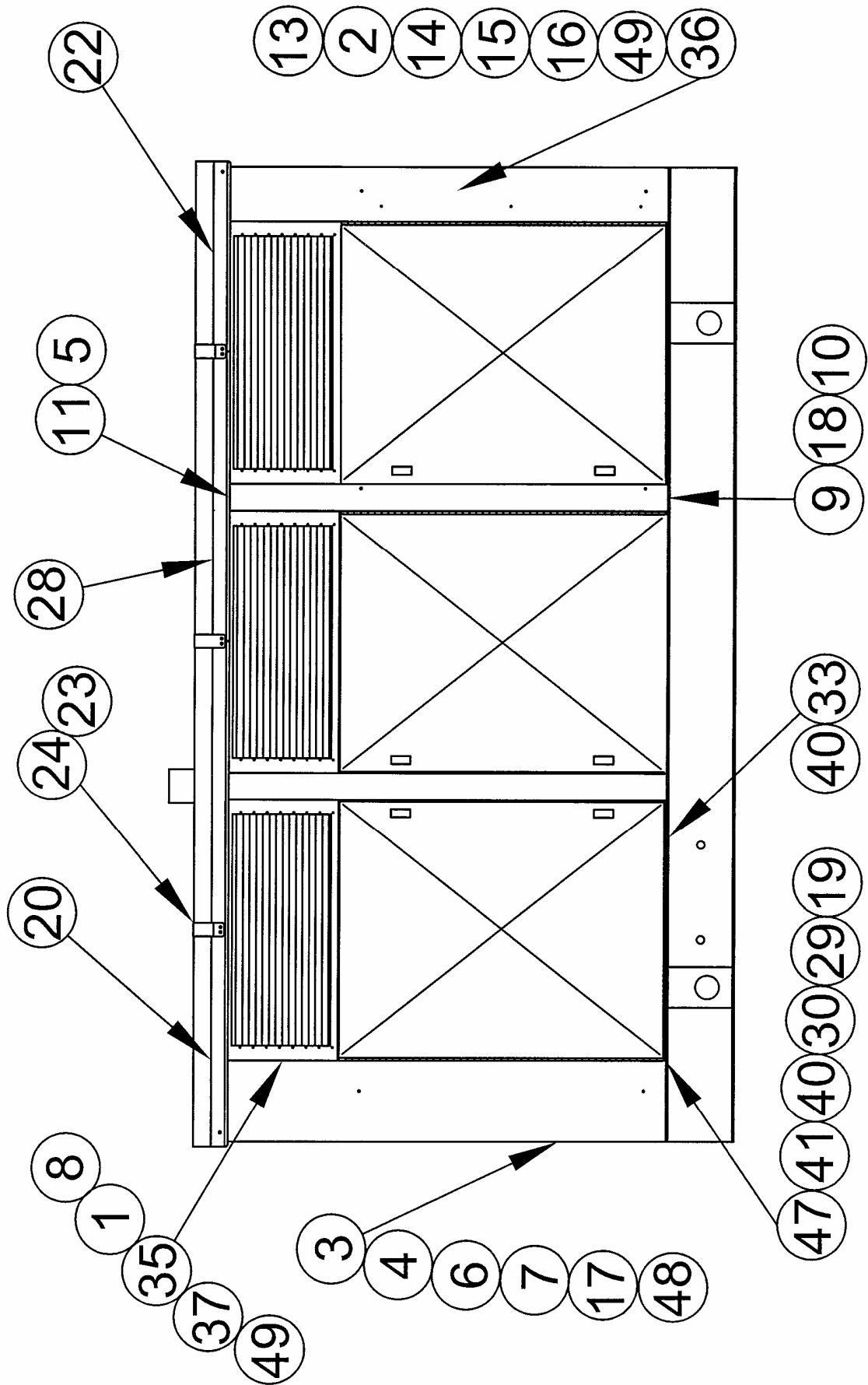
ITEM	PART NO	QUAN.	DESCRIPTION
1	B-350001-41	1	ORDERING SPEC., ENGINE
2	TABLE	1	ORDERING SPEC., GENERATOR
3	TABLE	1	WELDMENT, BASE
4	B-351397	2	WELDMENT, RADIATOR SUPPORT
5	B-351400	2	WELDMENT, SHOCKMOUNT SUPPORT
6	A-350896	1	TRAY, BATTERY
7	A-350484-3	1	KIT, BATTERY HOLD DOWN
8	A-96003-040	12	HHCS M10 - 1.5 x 40mm (BELLHOUSING)
9	A-97436-010	12	SLW 10mm (BELLHOUSING)
10	A-96007-030	8	HHCS M12 x 1.75 x 30mm (FLYWHEEL)
11	A-97436-012	8	SLW 12mm (FLYWHEEL)
12	65001-002	12	HHCS SS 5/16-18 x 1
13	A-16249-000	12	FN 5/16-18
14	1516-000	38	HHCS 1/2-13 x 1 1/4
15	98906-017	1	OIL DRAIN VALVE M24-1.5 X 5/8 FG-8N
16	16248-001	40	NUT, HEX 1/2-13 FLANGE LOCK, ZINC
17	A-93711-004	4	HHCS 3/4-10 x 2 1/2 (GENERATOR SM)
18	A-93711-000	4	HHCS 3/4-10 x 2 (ENGINE SM)
19	A-93709-000	8	HN 3/4 - 10
20	A-93710-000	8	SLW 3/4
21	A-350181-2	4	SPACER, GENERATOR MOUNTING
22	A-350944-2	6	SHOCK MOUNT (50 DUROMETER-ENGINE REAR AND GENERATOR)
23	A-350944-3	2	SHOCK MOUNT (60 DUROMETER-ENGINE FRONT)
24	A-96580-005	1	CABLE, BATTERY - 36" (POSITIVE)
25	A-96580-002	1	CABLE, BATTERY - 36" (NEGATIVE)
26	A-96580-001	1	CABLE, BATTERY (JUMPER)
27	A-72302-004	1	FITTING, HOSE - 10mm x 3/8" (FUEL RETURN)
28	A-351431	1	MODIFCATION, HOSE FITTING - 12mm x 1/2" (FUEL SUCTION)
29	A-351434-1	1	FERRULE, FUEL FITTING -10mm (FUEL RETURN)
30	A-351434-2	1	FERRULE, FUEL FITTING -12mm (FUEL SUCTION)
31	A-57580-000	2	HHCS 1/2-13 x 1 1/2
32	90948-000	2	BEVEL WASHER, 1/2"

PART NO	ITEM 2	ITEM 3	ITEM 47	PHASE/VOLTAGE
B-351945-1	B-350031-7	B-351389-3	B-300533-5	3Ø 277/480-60HZ ONLY
B-351945-2	B-351599-1	B-351389-4	B-300533-6	3Ø 240V-60HZ

ENGINE/GENERATOR ASSEMBLY CONTINUED

33	92388-000	2	HOSE FIT. 3/8NPT X 5/8 HOSE
34	A-351403	REF	MODIFICATION, ENGINE MTG FOOT
35			
36			
37			
38			
39	56372-000	1	HEX REDU. BUSH. 1/2 X 3/8
40	B-80781-010	1	BLOCK HEATER
41	A-93689-000	10FT.	HOSE, 5/8"
42	A-300114	6FT.	LW 3/0
43	A-64704-001	4	TERM RING
44	B-351903	1	CONTROL PEDISTAL
45	B-351901-5	1	ENGINE HARNESS
46	B-351888	1	CONTROL ASSEMBLY

47	TABLE	TABLE	MLCB BOX ASSEMBLY
48	A-92157-001	1	ROMEX CONNECTOR
49	B-15209-000	1	WARNING ELECTRICAL SHOCK
50	A-97381-001	1	DIESEL FUEL DECAL
51	B-80125-001	3	CT 1500:5
52	A-60710-097	1	TAG, OIL
53	B-351933	1	HARNESS, GEN END
54	93084-000	2	PIPE PLUG 1/2 GALV.
55	A-92388-001	2	HOSE FIT. 1/2NPT X 5/8
56	A-93726-000	2	HX. RED. BUSH. 1 X 1/2
57	80781-011	1	ENGINE COOLANT HEATER



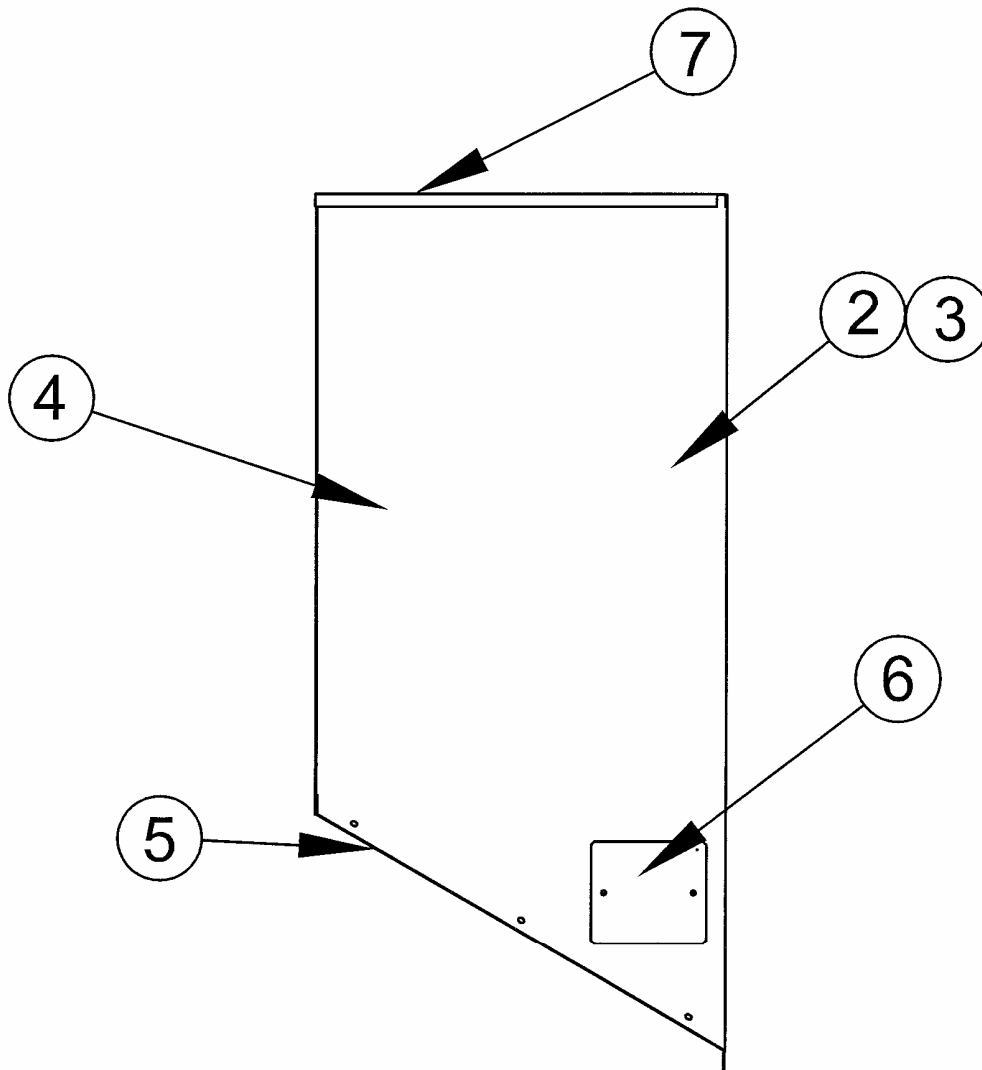
ENCLOSURE ASSEMBLY (STANDARD)

27	A-15209-000	2	ELEC. DANGER
26	A-63941-001	3	DECAL, HOT SURFACE
25	A-97813-000	4	DECAL, CYCLE CRANK
24	B-351869-4	3	ROOF, SUPPORT
23	B-351878-2	3	ROOF, SPLICE
22	B-351870-3	1	ROOF, REAR
21	B-351876-7	1	ROOF, MIDDLE FRONT
20	B-351875-6	1	ROOF, FRONT
19	B-351044-1	6	HSG, SIDE DOOR
18	B-351759-5	2	HSG, MID DOOR SUPPORT
17	A-351865-7	1	RADIATOR OUTLET
16	A-351867-5	1	SILL, TOP REAR
15	B-300552-8	1	ASSEMBLY, RIGHT REAR HOUSING
14	B-300552-7	1	ASSEMBLY, LEFT REAR HOUSING
13	B-351910-1	1	HOUSING, REAR
12	A-350239-1	1	HOLDER, DOCUMENT
11	B-351759-6	1	HOUSING, REAR DOOR SUPPORT LEFT
10	A-16250-000	20	FN 3/8-16
9	A-81590-001	16	BEVEL WASHER- 3/8
8	B-300552-4	6	ASSEMBLY, DOOR TOP
7	B-351859-14	1	HOUSING, FRONT RIGHT CORNER POST
6	B-351859-13	1	HOUSING, FRONT LEFT CORNER POST
5	B-351759-7	1	HOUSING, RIGHT DOOR SUPPORT
4	A-351861-14	1	HOUSING, RADIATOR TOP
3	A-351861-13	1	HOUSING, RADIATOR BOTTOM
2	B-351871-2	2	BAFFLE, REAR HOUSING
1	B-351936-6	6	BAFFLE, DOOR TOP
ITEM	PART NO	QUAN.	DESCRIPTION

ENCLOSURE ASSEMBLY (STANDARD) CONTINUED

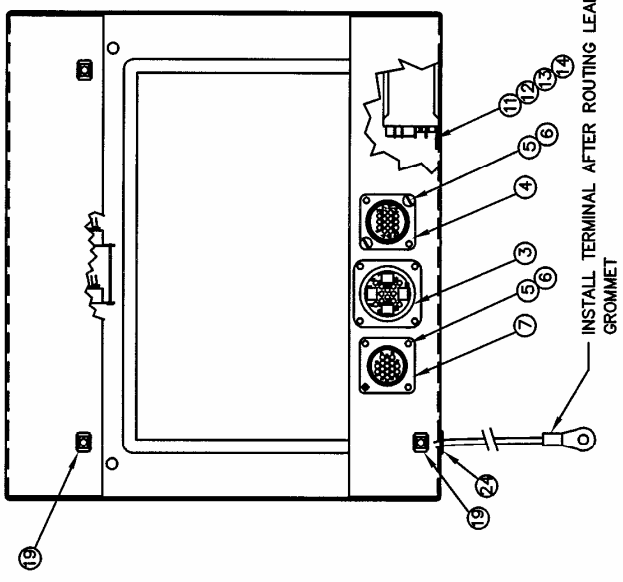
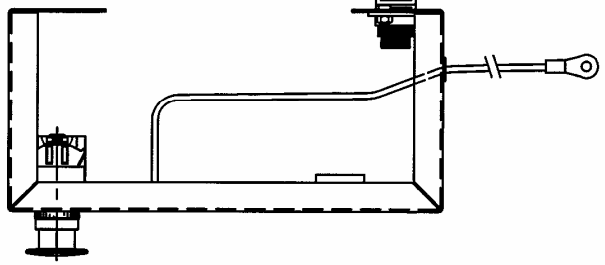
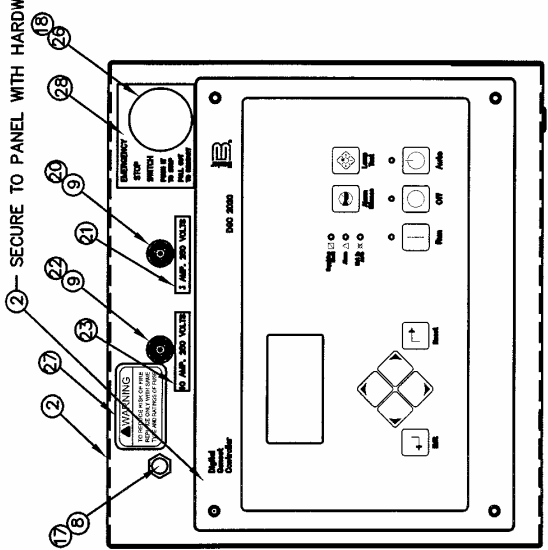
57			
56			
55			
54			
53	65003-001	104	SS LW 5/16-18 SPLIT
52	65001-001	104	SS HHCS 5/16-18 X 3/4 GR18-8
51	467-000	46	HHCS 5/16-18 x 3/4 GR5
50			
49	A-21698-001	250	#10 SELF TAPPING SCREW
48	A-92421-000	16 FT	FOAM STRIP
47	A-16249-000	186	5/16-18 HEX FLANGENUT
46			
45	480-000	12	LW 5/16 SPLIT ZINC
44	91658-001	8	HHCS 3/8-16 X 1 GR5 ZINC
43			
42	A-92419-000	10	NUT RETAINER, 5/16-18
41	A-62912-001	70 FT	STRIP - 7/8" WIDE
40	A-98879-001	72	THREADSTUD 5/16-18 x 3/4
39	A-91658-003	16	HHCS 3/8-16 X 1-1/2
38	A-21253-000	12	1/4-20 X 3/4 ROUND HEAD SCREW
37			
36			
35	9769-160	6	BONDING WIRE, DOOR
34	A-15424-000	12	RUBBER FOOT (DOOR BUMPER)
33	B-351939	6	LOWER DOOR JAM
32			
31			
30	A-350207-5	6	HINGE, SIDE DOOR
29	A-95229-005	12	LATCH
28	B-351876-5	1	ROOF, MIDDLE REAR
ITEM	PART NO	QUAN.	DESCRIPTION

ACOUSTIC ADD-ON ASSEMBLY



12	16249-000	4	NUT- HEX 5/16 FLANGELOCK ZINC
11	65003-001	33	SS LW 5/18 SPLIT
10	92419-000	39	NUT RETAINER 5/16-18
9	65001-001	33	SS HHCS 5/16-18 X 3/4
8	65005-001	6	SS FW 5/16
7	B-351866-3	1	ROOF, RAD. OUTLET
6	A-351775	2	ACCESS COVER, EXTENSION
5	B-351864-3	1	HSG, EXT FRONT BOTTOM
4	B-351863-3	1	HSG, EXTENSION END COVER
3	B-351862-6	1	EXTENSION, FRONT RIGHT SIDE
2	B-351862-5	1	EXTENSION, FRONT LEFT SIDE
1	B-351946	1	KIT, FOAM
ITEM	PART NO	QUAN.	DESCRIPTION

2- SECURE TO PANEL WITH HARDWARE SUPPLIED WITH CONTROL



ITEM	PART NO	QTY	DESCRIPTION
27	A-63941-004	1	FUSE RATING WARNING DECAL
25	A-49975-010	8	CABLE TIE
23	A-15983-006	1	10 AMP FUSE DECAL
21	A-15983-008	1	3 AMP FUSE DECAL
19	A-92495-000	4	1/4-20 RETAINED SQUARE NUTS
17	A-97517-001	1	REOSTAT, VOLTAGE ADJUSTING
15	A-300542	1	BATTERY
13	21976-000	2	LOCKWASHER #6
11	B-59944-003	1	RELAY
9	A-2489-001	2	FUSE HOLDER
7	A-96925-006	1	16 PIN CONNECTOR
5	24988-000	6	#6-32 X 1/2 BINDING HEAD SCREW
3	A-96925-003	1	16 PIN CONNECTOR
1	A-351900	1	CONTROL BOX FRONT PANEL
ITEM	PART NO	QTY	DESCRIPTION
28	A-63941-006	1	EMERGENCY STOP DECAL
26	A-99783-001	1	EMERGENCY STOP SWITCH
24	A-45853-000	1	GROMMET
22	A-95064-006	1	10 AMP FUSE
20	A-95064-000	1	3 AMP FUSE
18	A-99783-002	1	E-STOP SWITCH
16			HEXNUT #8-32
14	5113-000	2	BZ BIND, HMS #8-32 X 3/8
12	6402-001	2	ASSEMBLY, WIRING DIAGRAM
10	B-351889	1	ASSEMBLY, WIRING DIAGRAM
8	A-94394-000	1	KNOB
6	51802-000	6	#6-32 ELASTIC STOPNUT
4	A-96925-002	1	14 PIN CONNECTOR
2	A-351855-1	1	ENGINE CONTROL
ITEM	PART NO	QTY	DESCRIPTION

