

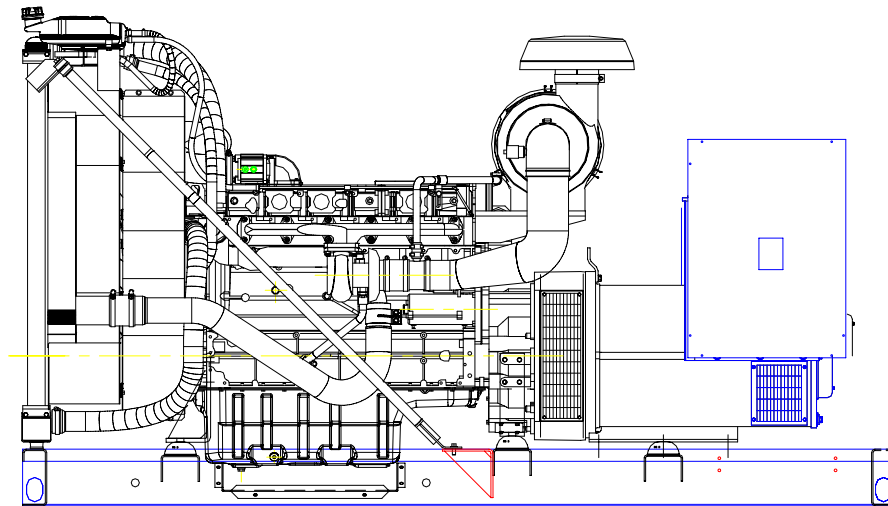
WINPOWER

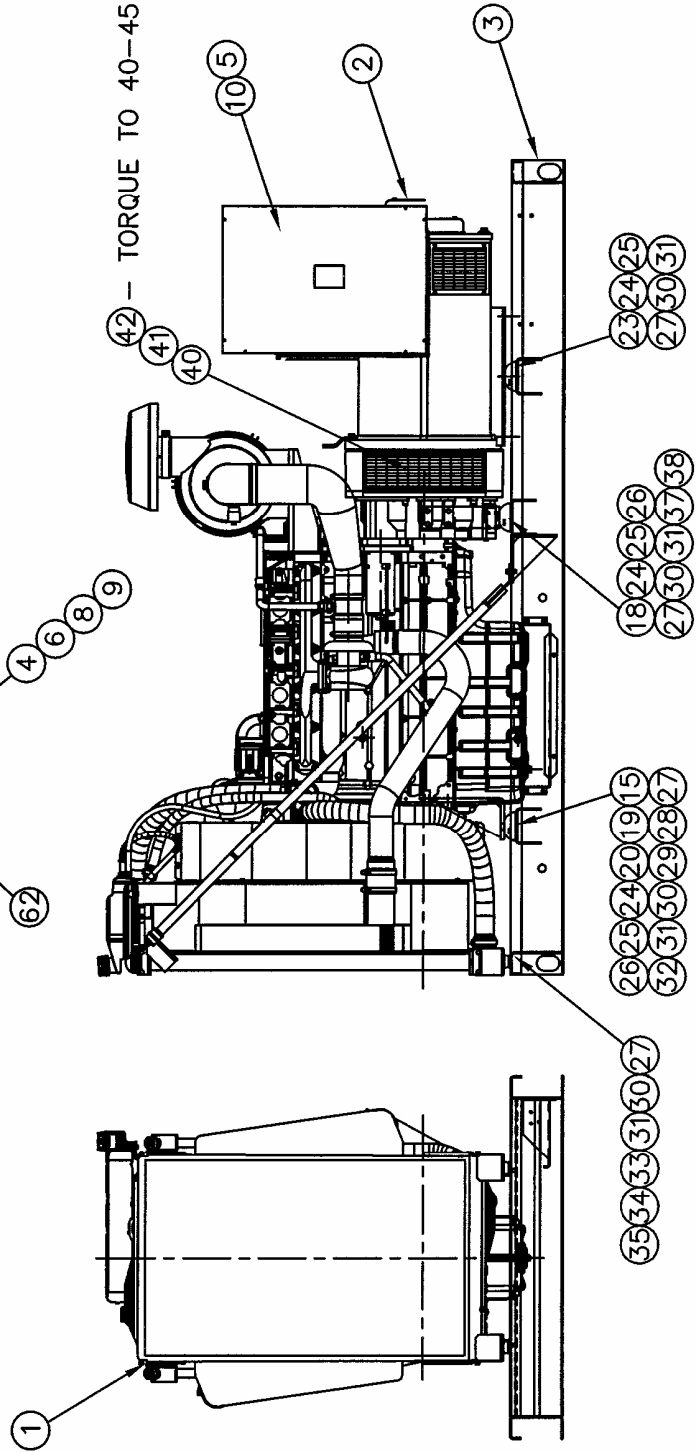
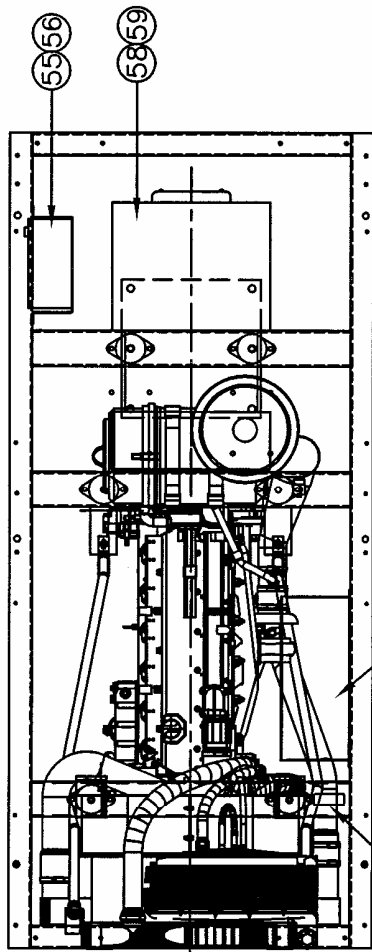
*A Division of **DTE** Dyna Technology Inc*

PARTS LIST

DR200D4

WITH BASLER DGC-2020 CONTROL





42 -- TORQUE TO 40-45 FT-LBS

ENGINE/GENERATOR ASSEMBLY

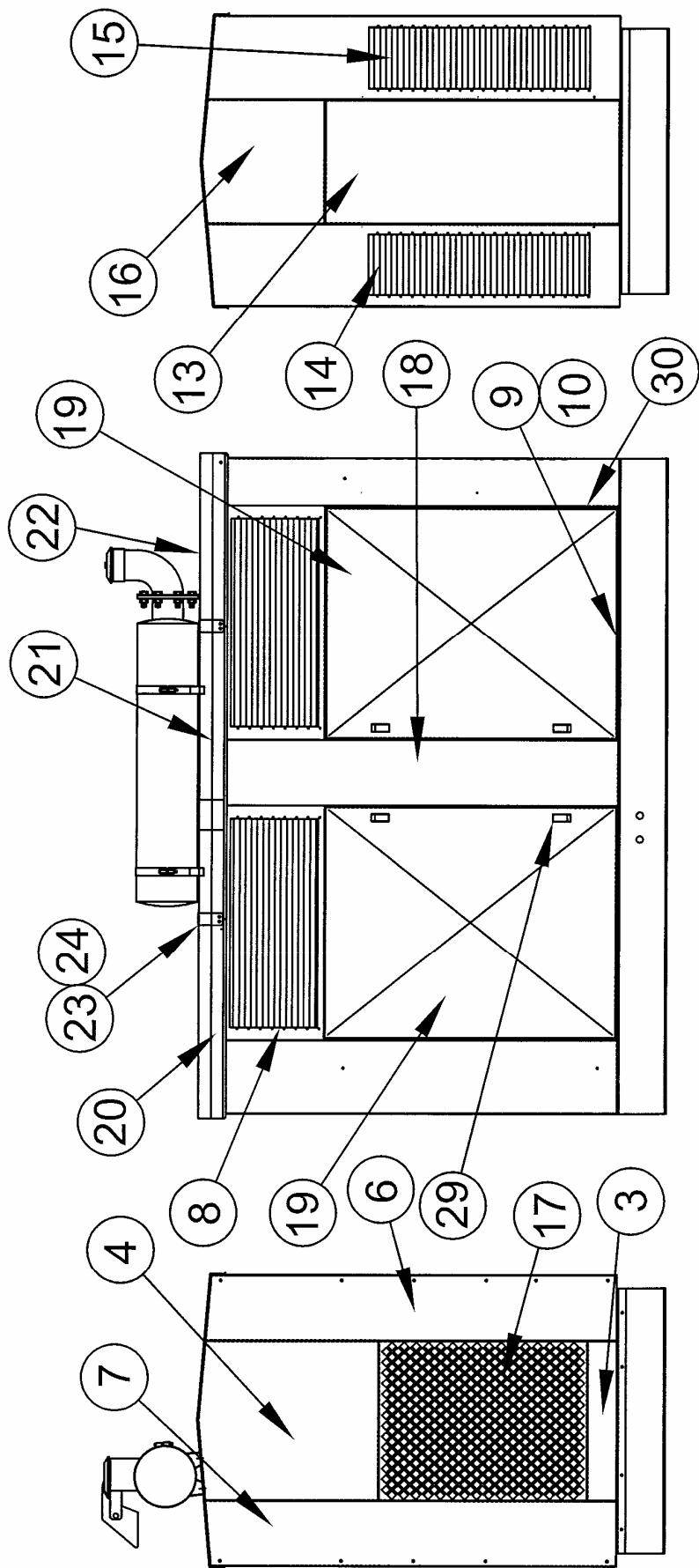
ITEM	PART NO	QTY	DESCRIPTION
1	B-350001-57	1	ENGINE: DEUTZ BF6M1013FC
2	TABLE	1	GENERATOR
3	B-351481-2	1	WELDMENT, BASE
4	A-99401-000	1	TRAY, BATTERY
5	B-351113-6	1	PANEL, GEN LEFT SIDE
6	A-350484-2	1	KIT, BATTERY HOLD DOWN
7	99265-002	1	WATER TEMP SENDER
8	A-65000-000	6	SS HHCS 1/4-20 X 5/8
9	16248-000	6	FLANGENUT LOCK 1/4-20
10	B-300533-9	1	ASSEMBLY, MLCB BOX
11	A-96580-005	1	CABLE, BATTERY (POSITIVE)
12	A-96580-002	1	CABLE, BATTERY (NEGATIVE)
13	60710-097	1	TAG- OIL WARNING
14	A-93542-011	1	LEADWIRE ASSEMBLY (NEUTRAL TO GROUND)
15	A-350944-3	6	SHOCK MOUNT (60 DUROMETER-ENG FRONT)
16			
17			
18	A-351480	2	SUPPORT, REAR ENGINE
19	A-351473-2	1	WELDMENT, RH FRONT ENGINE SUPPORT
20	A-351473-3	1	WELDMENT, LH FRONT ENGINE SUPPORT
21			
22			
23	A-93711-004	2	HHCS 3/4-10 x 2 1/2
24	A-93710-000	6	SLW 3/4
25	A-93709-000	6	HN 3/4
26	A-93711-000	4	HHCS 3/4-10 X 2
27	1516	26	HHCS 1/2-13 X 1 1/4
28	A-57580-000	2	HHCS 1/2-13 X 1 1/2
29	80781-009	1	BLOCK HEATER
30	98906-005	1	OIL DRAIN VALVE, RADIATOR
31	16250-001	28	HN 3/4
32	A-90948-000	2	BEVEL WASHER 1/2
33	300349-1	1	ADAPTER- M14X1.5 - 3/8 NPT
34	300349-5	2	ADAPTER- M14X1.5 - 1/8-27NPT F
35	92388-000	1	HOSE FITTING- 3/8NPT X 5/8 HOSE
36	53196-000	1	ELBOW, 90 DEG PIPE 3/8 NPT
37	A-96007-030	4	HHCS M12 X 1.75 X 35

B-351973-1	200 KW	B-350004-706	ALL
PART NO	RATING	ITEM 2	PHASE/VOLTAGE

ENGINE/GENERATOR ASSEMBLY CONTINUED

38	A-97436-012	4	LW M12
39	63644-018	8	HHCS M10 X 1.50 X 18 (FLYWHEEL)
40	A-96003-040	12	HHCS M10 X 1.50 X 40 (BELL HOUSING)
41	A-97436-010	20	LW M10
42	A-351500	1	BRACKET, WATER SEPARATOR
43	93617-005	2	HHCS 7/16-14 X 1-1/2
44	90570-000	2	LW 7/16
45	81034-000	2	HN 7/16
46	96002-016	2	HHCS M8 X 1.25 X 16MM
47	21857-000	2	PIPE COUPLER- 3/8 NPT
48	80980-000	1	12 VDC STARTER RELAY
49	94319-007	3	HOSE FITTING- 3/8-18 X 3/8 HOSE BARB
50	A-300515	9 GAL	15W-40 SEMI-SYNTH DSL ENGINE OIL
51	99265-001	1	WATER TEMP SENDER; 3/8-18 NPT
52	A-99252-012	1	KIT, OIL DRAIN

ITEM	PART NO	QTY	DESCRIPTION
53	99267-001	1	OIL PRESSURE SENDER
54	93689-001	7FT	HOSE, 5/8 ID UNCUT
55	351888	1	ASSY, ENGINE CONTROL
56	351901	1	HARNESS, ENGINE
57	351903	1	CONTROL PEDISTAL
58	80124-012	3	CT- 1000:5
59	351933	1	HARNESS, GEN END
60	93084-000	1	PIPE PLUG 1/2"
61	92157-001	1	ROMEX CONNECTOR- 1"
62	A-97381-001	1	DIESEL FUEL DECAL

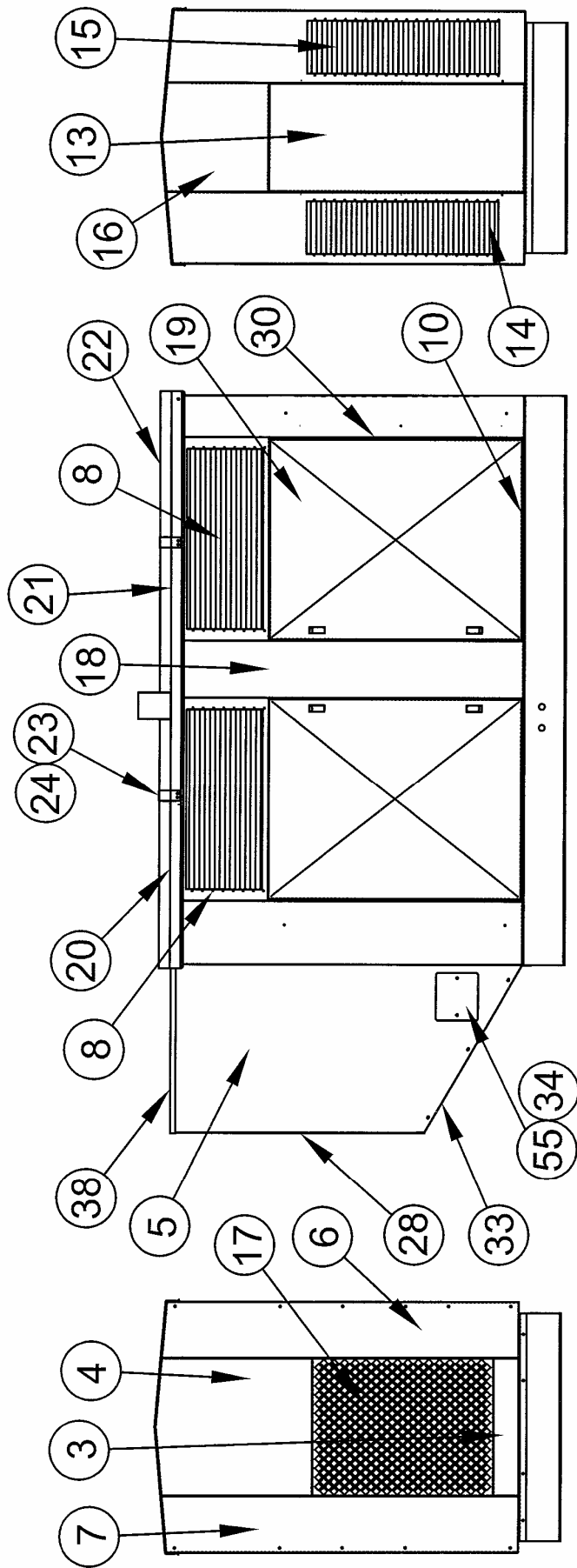


ENCLOSURE ASSEMBLY (STANDARD)

30	A-350207-5	4	HINGE, SIDE DOOR
29	A-95229-005	8	LATCH
28			
27	A-15209-000	2	ELEC. DANGER
26	A-63941-001	3	DECAL, HOT SURFACE
25	A-97813-000	4	DECAL, CYCLE CRANK
24	B-351869-5	2	ROOF, SUPPORT
23	B-351878-1	2	ROOF, SPLICE
22	B-351870-1	1	ROOF, REAR
21	B-351876-12	1	ROOF, MIDDLE
20	B-351875-4	1	ROOF, FRONT
19	B-351044-1	4	HSG, SIDE DOOR
18	B-351759-4	2	HSG, MID DOOR SUPPORT
17	A-351865-9	1	RADIATOR OUTLET
16	A-351867-4	1	SILL, TOP REAR
15	B-300552-6	1	ASSEMBLY RIGHT REAR
14	B-300552-5	1	ASSEMBLY LEFT REAR
13	B-351868-2	1	HOUSING, REAR
12	A-350239-1	1	HOLDER, DOCUMENT
11			
10	A-16250-000	20	FN 3/8-16
9	A-81590-001	12	BEVEL WASHER- 3/8
8	B-300552-4	4	ASSEMBLY DOOR TOP
7	B-351859-18	1	HOUSING, FRONT RIGHT CORNER POST
6	B-351859-17	1	HOUSING, FRONT LEFT CORNER POST
5			
4	A-351861-8	1	HOUSING, RADIATOR TOP
3	A-351861-16	1	HOUSING, RADIATOR BOTTOM
2	B-351936-3	2	BAFFLE, REAR HOUSING
1	B-351936-6	4	BAFFLE, DOOR TOP
ITEM	PART NO	QUAN.	DESCRIPTION

ENCLOSURE ASSEMBLY (STANDARD) CONTINUED

57	B-351939	4	LOWER DOOR JAM
56	B-350867-24	1	KIT, INDUSTRIAL EXHAUST
55	A-65001-002	120	HHCS SS 5/16-18 x 1
54	A-65006-001	8	5/16-18 SS FLANGE NUT
53	A-91658-003	20	HHCS 3/8-16 X 1-1/2
52	A-15424-000	8	RUBBER FOOT (DOOR BUMPER)
51	A-21253-000	8	1/4-20 X 3/4 ROUND HEAD SCREW
50	A-65005-001	35	5/16 SS FLAT WASHER
49	A-21698-001	210	#10 SELF TAPPING SCREW
48	A-92421-000	12 FT	FOAM STRIP
47	A-16249-000	86	5/16-18 HEX FLANGENUT
46	A-16248-000	14	1/4-20 HEX FLANGENUT
45			
44	A-65003-000	4	SLW SS - 1/4
43	A-65000-000	4	HHCS SS 1/4-20 x 5/8
42	A-92419-000	35	NUT RETAINER, 5/16-18
41	A-62912-001	70 FT	STRIP - 7/8" WIDE
40	A-98879-001	40	THREADSTUD 5/16-18 x 3/4
39			
38			
37			
36			
35	9769-153	4	BONDING WIRE, DOOR
34			
33			
32			
31			
ITEM	PART NO	QUAN.	DESCRIPTION



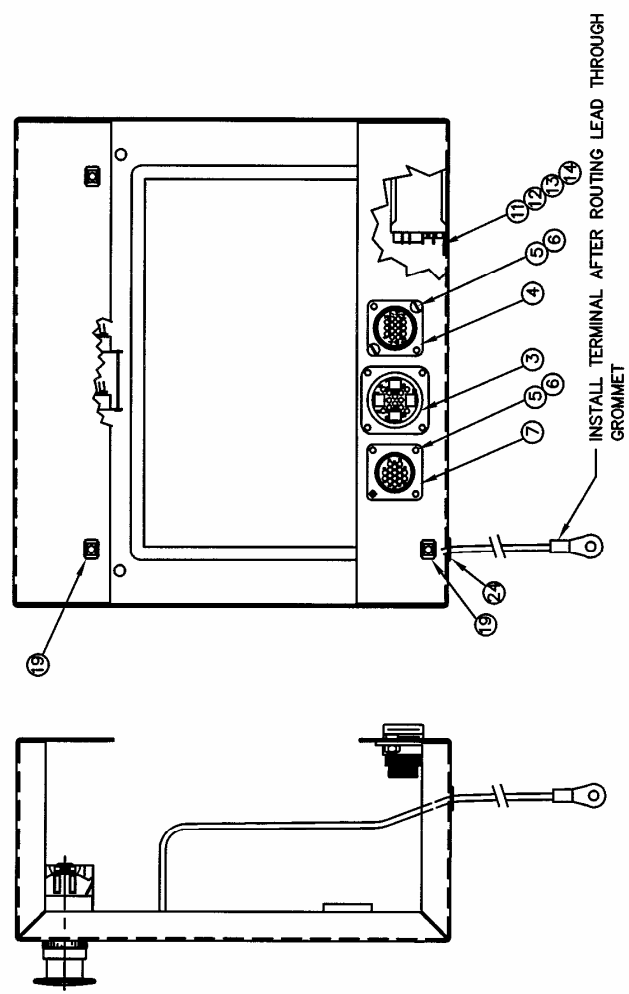
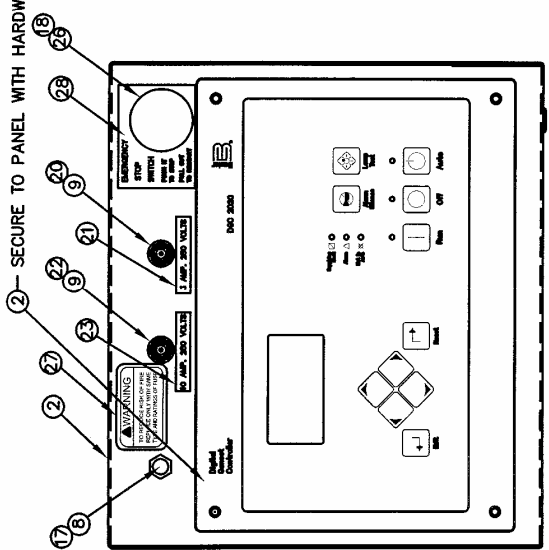
ENCLOSURE ASSEMBLY (ACCOUSTIC)

27	A-15209-000	2	ELEC. DANGER
26	A-63941-001	3	DECAL, HOT SURFACE
25	A-97813-000	4	DECAL, CYCLE CRANK
24	B-351869-5	2	ROOF, SUPPORT
23	B-351878-1	2	ROOF, SPLICE
22	B-351870-1	1	ROOF, REAR
21	B-351876-13	1	ROOF, MIDDLE
20	B-351875-4	1	ROOF, FRONT
19	B-351044-1	4	HSG, SIDE DOOR
18	B-351759-4	2	HSG, MID DOOR SUPPORT
17	A-351865-9	1	RADIATOR OUTLET
16	A-351867-4	1	SILL, TOP REAR
15	B-300552-6	1	ASSEMBLY, RIGHT REAR
14	B-300552-5	1	ASSEMBLY, LEFT REAR
13	B-351868-2	1	HOUSING, REAR
12	A-350239-1	1	HOLDER, DOCUMENT
11	B-351862-2	1	HOUSING, RIGHT FRONT EXTENSION
10	A-16250-000	20	FN 3/8-16
9	A-81590-001	12	BEVEL WASHER- 3/8
8	B-300552-4	4	ASSEMBLY, DOOR TOP
7	B-351859-18	1	HOUSING, FRONT RIGHT CORNER POST
6	B-351859-17	1	HOUSING, FRONT LEFT CORNER POST
5	B-351862-1	1	HOUSING, LEFT FRONT EXTENSION
4	A-351861-8	1	HOUSING, RADIATOR TOP
3	A-351861-16	1	HOUSING, RADIATOR BOTTOM
2	B-351936-3	2	BAFFLE, REAR HOUSING
1	B-351936-2	4	BAFFLE, DOOR TOP
ITEM	PART NO	QUAN.	DESCRIPTION

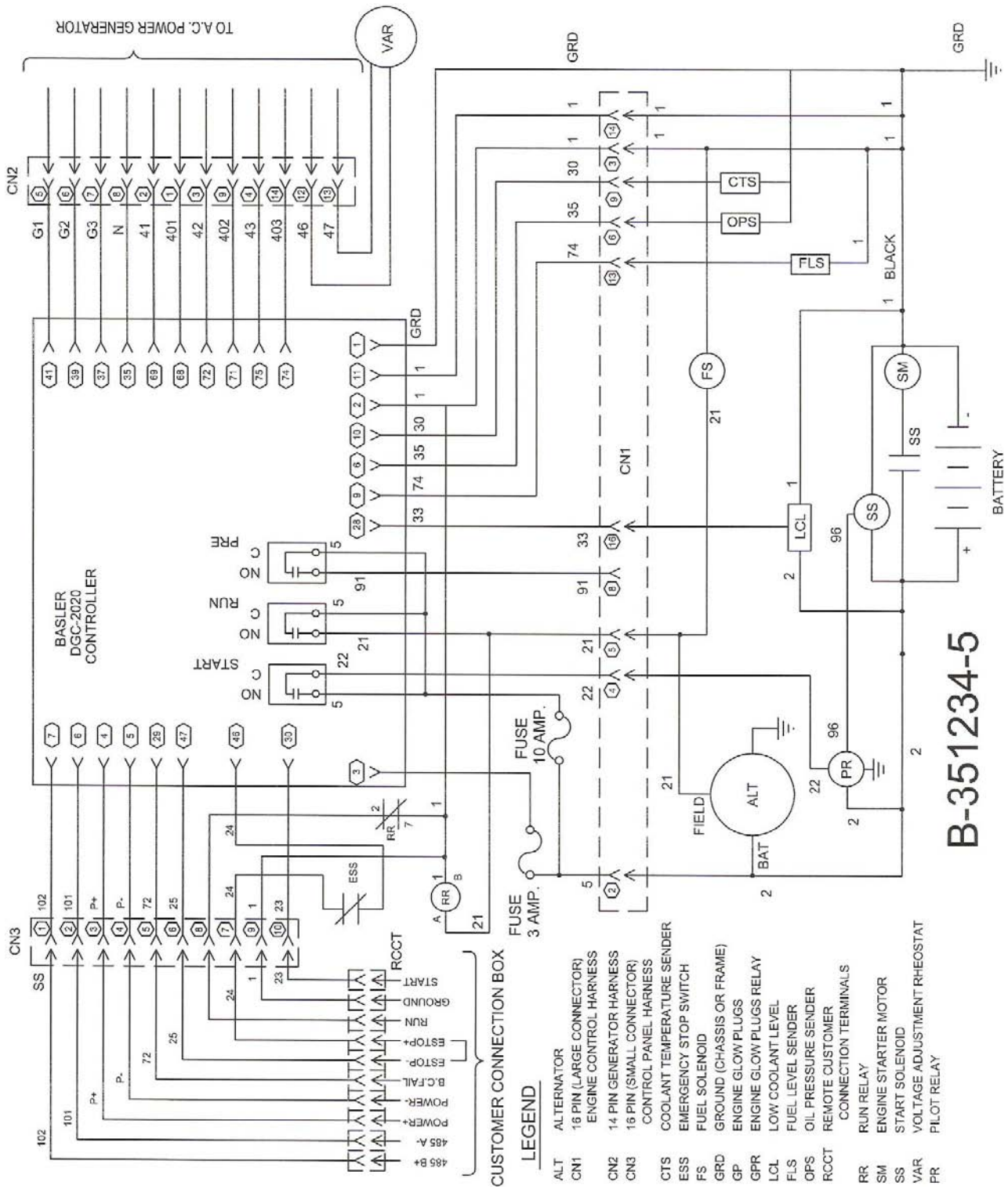
ENCLOSURE ASSEMBLY (ACCOUSTIC) CONTINUED

57	B-351939	4	LOWER DOOR JAM
56	B-350545-13	1	KIT, CRITICAL EXHAUST
55	A-65001-001	120	HHCS SS 5/16-18 x 1
54	A-65006-001	8	5/16-18 SS FLANGE NUT
53	A-91658-003	20	HHCS 3/8-16 X 1-1/2
52	A-15424-000	8	RUBBER FOOT (DOOR BUMPER)
51	A-21253-000	8	1/4-20 X 3/4 ROUND HEAD SCREW
50	A-65005-001	6	5/16 SS FLAT WASHER
49	A-21698-001	210	#10 SELF TAPPING SCREW
48	A-92421-000	12 FT	FOAM STRIP
47	A-16249-000	86	5/16-18 HEX FLANGENUT
46	A-16248-000	14	1/4-20 HEX FLANGENUT
45			
44			
43			
42	A-92419-000	35	NUT RETAINER, 5/16-18
41	A-62912-001	70 FT	STRIP - 7/8" WIDE
40	A-98879-001	48	THREADSTUD 5/16-18 x 3/4
39	B-351919	1	FOAM KIT
38	B-351866-1	1	HOUSING, SNORKEL ROOF
37	A-91478-017	4	SCREEN, DOOR INTAKE
36	A-91478-019	2	SCREEN, REAR
35	A-9769-153	4	BONDING WIRE, DOOR
34	A-351775	2	COVER, ACCESS
33	B-351864-1	1	HOUSING, SNORKEL BOTTOM
32	A-350137-8	32	LOUVER, SIDE
31	A-350137-9	38	LOUVER, REAR
30	A-350207-5	4	HINGE, SIDE DOOR
29	A-95229-005	8	LATCH
28	B-351863-1	1	HOUSING, SNORKEL END
ITEM	PART NO	QUAN.	DESCRIPTION

②— SECURE TO PANEL WITH HARDWARE SUPPLIED WITH CONTROL



27	A-63941-004	1	FUSE RATING WARNING DECAL	28	A-63941-006	1	EMERGENCY STOP DECAL
25	A-49975-010	8	CABLE TIE	26	A-99783-001	1	EMERGENCY STOP SWITCH
23	A-15983-006	1	10 AMP FUSE DECAL	24	A-45853-000	1	GROMMET
21	A-15983-008	1	3 AMP FUSE DECAL	22	A-95064-006	1	10 AMP FUSE
19	A-92495-000	4	1/4-20 RETAINED SQUARE NUTS	20	A-95064-000	1	3 AMP FUSE
17	A-97517-001	1	REOSTAT, VOLTAGE ADJUSTING	18	A-99783-002	1	E-STOP SWITCH
15	A-300542	1	BATTERY	16			
13	21976-000	2	LOCKWASHER #8	14	5113-000	2	HEXNUT #8-32
11	B-59944-003	1	RELAY	12	6402-001	2	BZ BIND, HMS #8-32 X 3/8
9	A-2489-001	2	FUSE HOLDER	10	B-351869	1	ASSEMBLY, WIRING DIAGRAM
7	A-96925-006	1	16 PIN CONNECTOR	8	A-94394-000	1	KNOB
5	24988-000	6	#6-32 X 1/2 BINDING HEAD SCREW	6	51802-000	6	#6-32 ELASTIC STOPNUT
3	A-96925-003	1	16 PIN CONNECTOR	4	A-96925-002	1	14 PIN CONNECTOR
1	A-351900	1	CONTROL BOX FRONT PANEL	2	A-351855-1	1	ENGINE CONTROL
ITEM	PART NO	QTY	DESCRIPTION	ITEM	PART NO	QTY	DESCRIPTION



B-351234-5

CUSTOMER CONNECTION BOX

- LEGEND**
- ALT ALTERNATOR
 - CN1 16 PIN (LARGE CONNECTOR)
 - CN2 14 PIN GENERATOR HARNESS
 - CN3 16 PIN (SMALL CONNECTOR)
 - CTS COOLANT TEMPERATURE SENDER
 - ESS EMERGENCY STOP SWITCH
 - FS FUEL SOLENOID
 - GRD GROUND (CHASSIS OR FRAME)
 - GP ENGINE GLOW PLUGS
 - GPR ENGINE GLOW PLUGS RELAY
 - LCL LOW COOLANT LEVEL
 - FLS FUEL LEVEL SENDER
 - OPS OIL PRESSURE SENDER
 - RCCT REMOTE CUSTOMER CONNECTION TERMINALS
 - RR RUN RELAY
 - SM ENGINE STARTER MOTOR
 - SS START SOLENOID
 - VAR VOLTAGE ADJUSTMENT RHEOSTAT
 - PR PILOT RELAY