

MODEL DER35C4-R

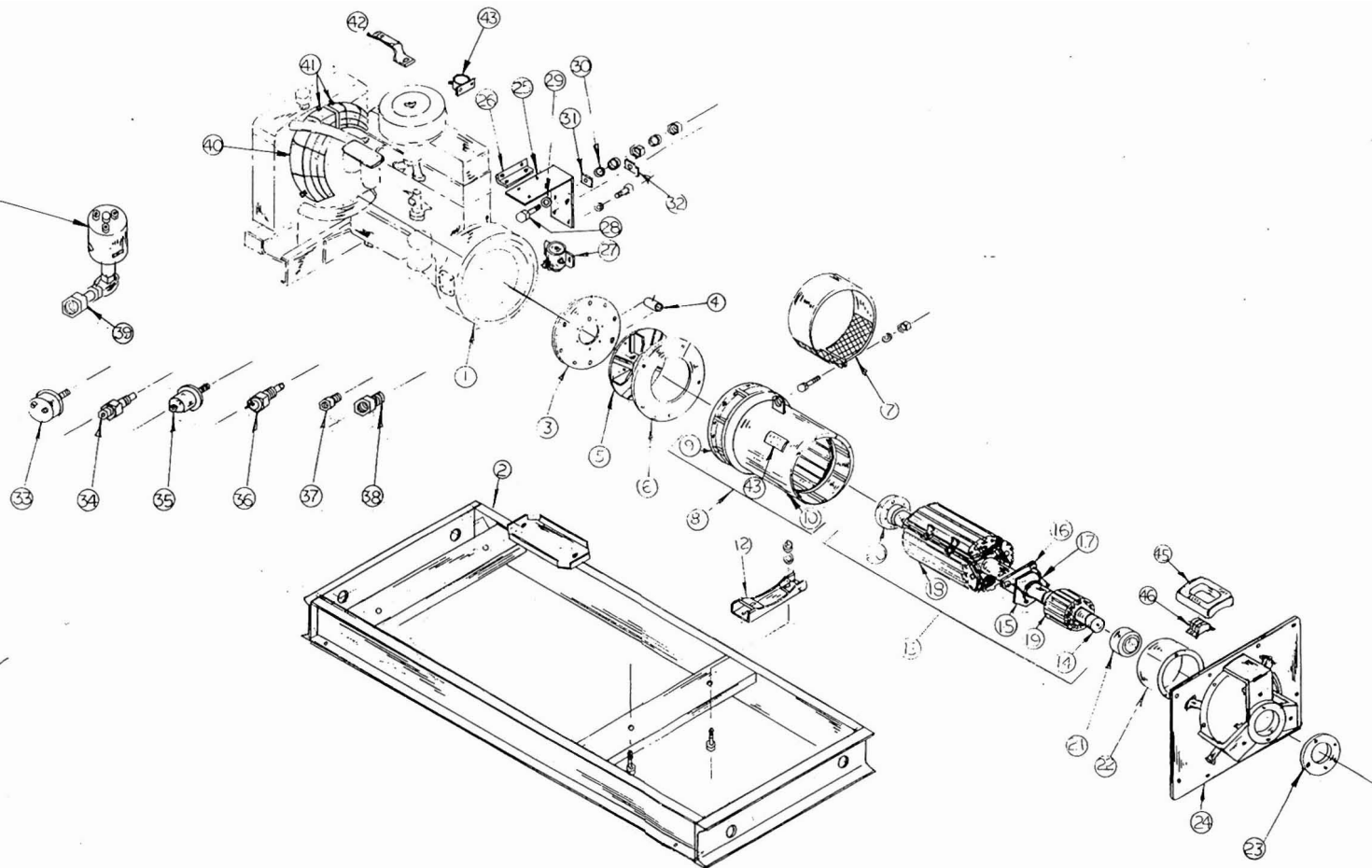
REF.	PART DESCRIPTION	TYPE 5 PART NO.	QTY
1	Engine Cummins 4B3.9	EC-18000	1
2	Skid Assembly	G-7745-3	1
3	Coupling Disc	S-5813-1	2
4	Fan Spacer	S-6878-4	4
5	Fan Assembly	G-5829	1
6	Fan Shroud	S-6902	1
7	Fan Guard	G-3863-2	1
8	Stator & Frame Assembly	G-5818-15	1
9	Frame Assembly	G-5816	1
10	Stator Electrical	G-6881-2	1
11	N/A		
12	Generator Support	G-5225	1
13	Revolving Elec. Assy.	G-6920	1
14	Shaft	N-587-1	1
15	Heat Sink Assembly	G-6303	1
16	Diode-Forward	EE-3105	3
17	Diode-Reverse	EE-3106	3
18	Rotor Elec. Assy.	G-6907	1
19	Exciter Armature	G-6933	1
20	Coupling Hub	I-825-1	1
21	Bearing	D-7	1
22a	Exciter Frame Assy.	G-6947	1
22b	Exciter Frame	S-6906	1
22c	Field Poles	G-292-1	4
22d	Insulator	J-436	8
22e	Field Coil	H-1202	4
23	Bearing Retainer	S-3952	1
24	Bearing Housing	I-881	1
25	Bracket	S-5872-1	2
26	Angle	S-6076	1
27	Start Contactor	EE-1201	1
28	Screw 5/16-18x1½ brass	3547-1	2
29-30	N/A		
31	Nameplate Positive Battery	Z-283	1
32	Nameplate Negative Battery	Z-284	1
33	Oil Pressure Switch	OP-23	1
34	Water Temp Sender	WT-22	1
35	Oil Pressure Sender	OP-22	1
36	Water Temp Switch	WT-24-2	1
37	Tee 1/8M to 1/8F to 1/8F	EN-18174	1
38	Bushing 3/8M to 1/4F NPT	EN-1820	1
39-40	N/A		
N.S.	Housing Assy.	G-7730-3	1
N.S.	Trailer	TR-2275-10	1
N.S.	Magnetic Pickup	EN-1138	1

Wiring Diagram IF-5515 A.C.
 IF-5516-2 D.C.
 Parts Drawing IF-4718 Generator
 IF-5525 Panel

Parts List PL-2703

Sheet 1 of 3

OPTIONAL ON SOME MODELS



IF4718

PANEL ASSEMBLY

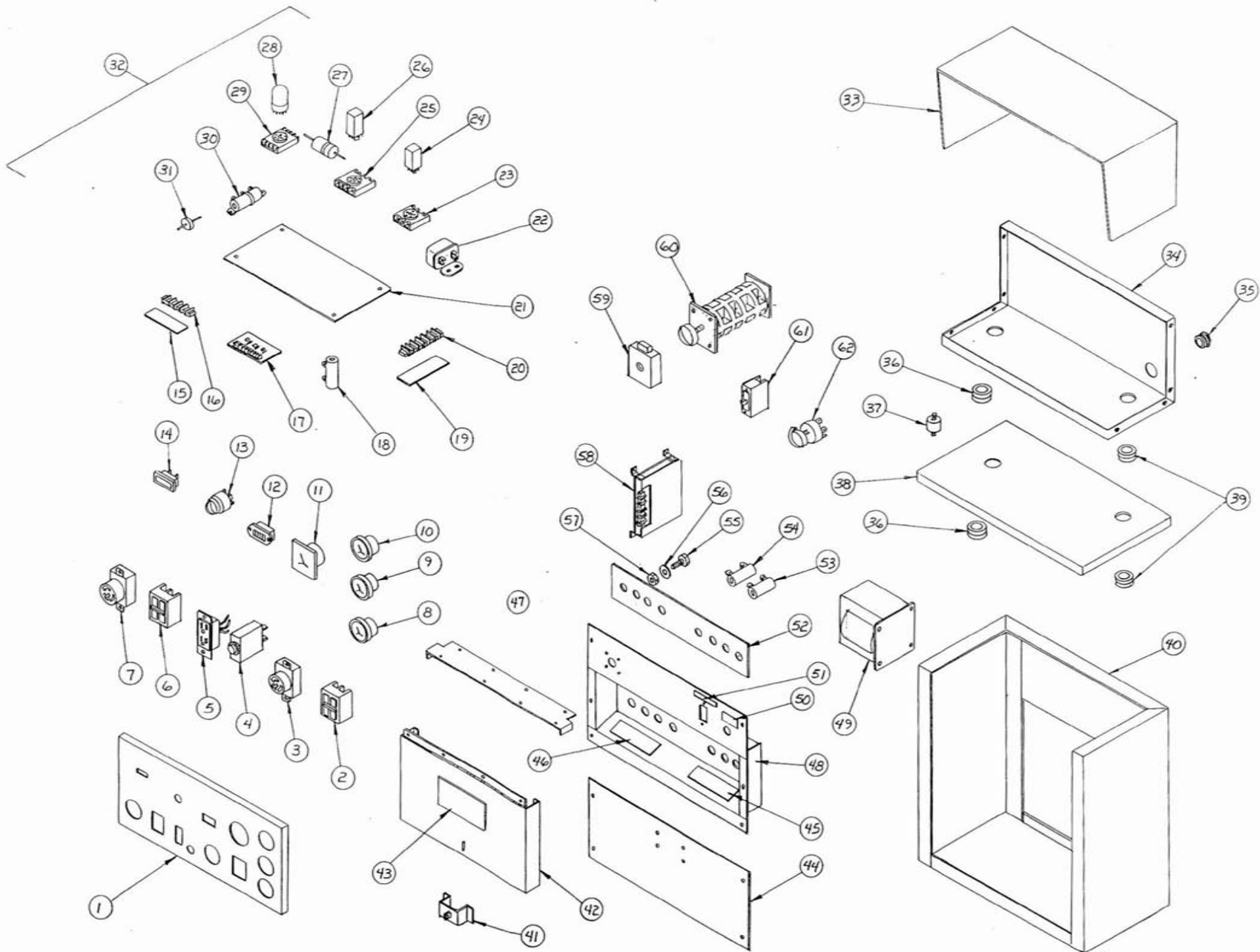
G-8350

REF	PART DESCRIPTION	PART NO.	QTY
1	Panel Front	S-10021	1
2	Circuit Breaker	EE-2809-10	1
3	Receptacle CS Type	EE-2349	1
4	Circuit Breaker	EE-1885	1
5	Ground Fault Receptacle	EE-2350	1
6	Circuit Breaker	EE-2809-10	1
7	Receptacle CS Type	EE-2349	1
8	D.C. Ammeter (100-0-100)	AM-39	1
9	Oil Pressure Gauge	OP-21	1
10	Water Temperature Gauge	WT-21	1
11	Voltmeter	VM-69-6	1
12	Hour Meter	TM-17	1
13	Switch Engine Run-Start-Stop	EE-196	1
14	Fault Light	EE-1939	1
15	Terminal Strip	EE-653-8	1
16	Terminal Block	EE-653	1
17	N/A		
18	Resistor	R-107	1
19	Terminal Strip	EE-1700-2	1
20-21	N/A		
22	Relay	EE-1287	
23-31	N/A		
32	Control Module	EE-3211-35	1
33	Upper Panel Top	S-9814	1
34	Upper Panel Back	S-9816-1	1
35	Bushing	JJ-24598	1
36	Grommet	6100	2
37	Vibration Isolator	W-261	4
38	Panel Top	S-9815	1
39	Grommet	6107	2
40	Panel Box	G-7747	1
41	Lock Bracket	G-7778	1
42	Cover Assy.	G-7777-1	1
43	Nameplate Danger	Z-2580	1
44	Lower Back Panel	G-7776	1
45	Nameplate 277/480	Z-2579	1
46	Nameplate 120/240	Z-2578	1
47	N/A		
48	Back Panel Assy.	G-7748	1
49	Transformer	EE-2062	1
50	Nameplate ADJ Volts	Z-2582	1
51	Nameplate Field Breaker	Z-2581	1
52	Glastic Board	J-821	1
53	Resistor	R-276	1
54	Resistor	R-276	1
55	Bolt	3670-1	8

Parts list PL-2703
Sheet 2 of 3

REF.	PART DESCRIPTION	PART NO.	QTY
56	Washer	1031	8
57	Nut	4716	16
58	Voltage Regulator	EE-1753	1
59	Switch Lock	EE-3251-1	1
60	Selector Switch	EE-3251	1
61	Field Breaker	EE-2818	1
62	Rheostat	R-285	1
N/S	Fuse	EE-445-1	2
N/S	Fuse Holder	EE-425	2
N/S	Time Delay Relay 60 Sec.	EE-1061-2	1

Part List PL-2703
Sheet 3 of 3



IF - 5525

IF - 5525

THIS DOCUMENT IS UNCLASSIFIED AND IS THE PROPERTY OF MANPOWER CORP. IT IS TO BE USED IN ANY MANNER DETRIMENTAL TO OUR INTERESTS. IT IS TO BE RETURNED TO US IN ANY FORM WITHOUT EXCEPT AS AUTHORIZED BY MANPOWER CORP. MANAGEMENT AUTHORITY.

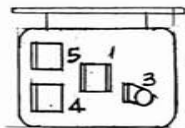
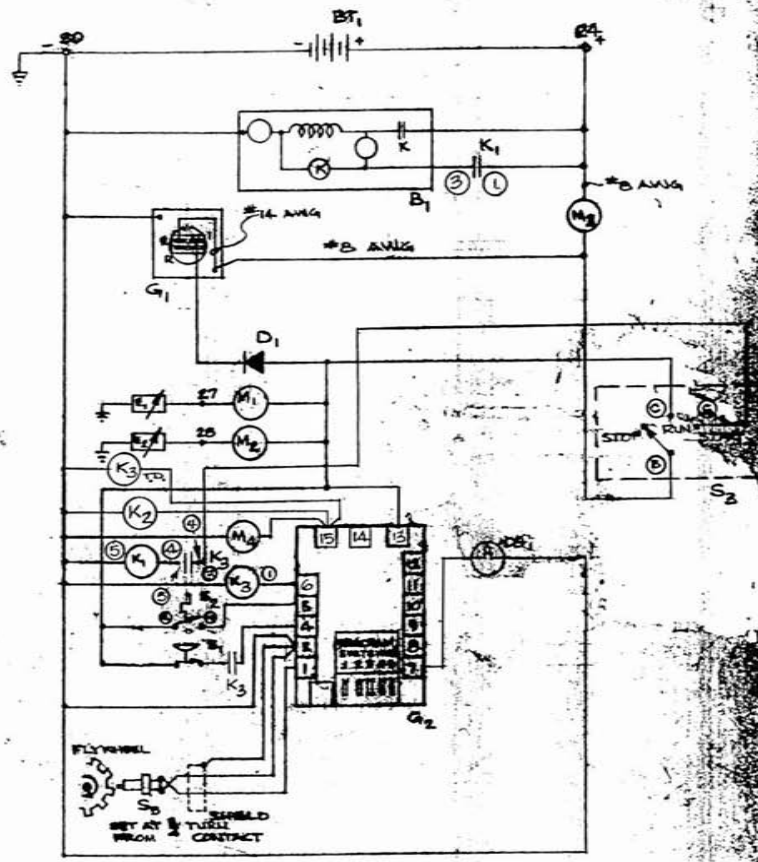
REF	PART NO.	DESCRIPTION
		SOLENOID SWITCH
		BATTERY
G-7725		SENDER, OIL PRESSURE
G-7710		SENDER, ENGINE COOLANT TEMPERATURE
EE-1287		START RELAY
EE-1287		FUEL SOLENOID
DP-23		SWITCH, LOW OIL PRESSURE (CLOSED 0-15 PSI)
MT-24-1		SWITCH, HIGH COOLANT TEMPERATURE (205°F)
EE-773B		MAGNETIC PICK-UP

CONTROL CABINET PARTS LIST

REF	PART NO.	DESCRIPTION
D	G-7879-1	BLOCKING DIDDLE ASSEMBLY
DS	EE-1939	ENGINE FAULT LIGHT
K ₂	EE-1061-2	RELAY (T.O.)
EE		ENGINE CONTROLLER (EE-3211)
G ₁	G-7710	GAUGE, OIL PRESSURE
G ₂	G-7725	GAUGE, ENGINE COOLANT TEMPERATURE
MA	AM-39	AMMETER, (100-0-100) CHARGE RATE
MA	TM-17	HOUR METER
S ₃	EE-196	SWITCH (STOP, RUN, START)

ENGINE	DATE	DO NOT SCALE
POSITION SYMMETRY COORDINATE CENTERLINE	DRAWN BY M.E. PROJ ENG MICROFILM DATE	DATE

NOTES
 1. ALL WIRING SHALL BE #16 AWG UNLESS NOTED OTHERWISE.



START RELAY (BOTTOM VIEW)

