

file

SN-DD1326

BILL OF MATERIAL

PART NO. **CM605L4-C**

ORDER NO. **326** DATES **04/24/73 08/27/73**

PART OR ASSY **DS7518C-SR2 ALTERNATOR ASSY**

PLANT.ORD	PAINT	DRWG NO.	ORG DATE	REV NO.	BY	PAGE NO
25	STOCK RED	F 4253	03/28/67	23005	TG	

GENERAL COMMENTS--6500 WATTS
 120/240 VOLTS 1 PHASE
 27 AMPS 60 CYCLES
 1800 RPM CON DUTY

EXT-QTY	QTY	U/M	CD	PART NUM.	DESCRIPTION	DRAWING NUM
	1	EA			DRAWING	*F 4253
	1	EA			ENGRG SPEC	ES 13
		GA		JJ-25105	PRIME PAINT	
	1	EA			WIRING DIAGRAM Z-1881	*C 5866
	1	EA	F*	G -05361-13	ASSY, FIELD FRAME	ES 13
25	1	EA	F	G -05225	GEN SUPT	C 5495
50	2	EA	P	09217	SCR 3/8-16 X 1 HH SELF-TAP	
50	2	EA	P	01185	WASHER 3/8 FLAT	
50	2	EA	P	01116	WASHER 3/8 INT TT	
25	1	EA	F	I -00755	ENGINE ADAPTER	F 3390
125	5	EA	P	11508	SCRW3/8-16X1HH INT TT GR 5	
25	1	EA	F	G -05454	BRUSH GEAR ASSY	C 5819
200	8	EA	P	04611	NUT 5/16-24 HX	
200	8	EA	P	01115	WASHER 5/16 INT TT	
100	4	EA	P	Y -00051	BRUSH	
100	4	EA	P	G -03422	BRUSH SPRING	
	1	EA	F*	G -05370-35	ASSY ARMATURE	ES 13 C 5731
25	1	EA	P	D -00008	BEARING	
25	1	EA	F	IQ-00300-01	DRIVING MEMBER	C 5813
25	1	EA	P	S -06407	STUD 3/8-16X13	E 7364
25	1	EA	P	S -06449	WASHER, SHOULDER	E 7420
25	1	EA	P	01116	WASHER 3/8 INT TT	

DD 1326

BILL OF MATERIAL

PART NO. CM605L4-C

ORDER NO.

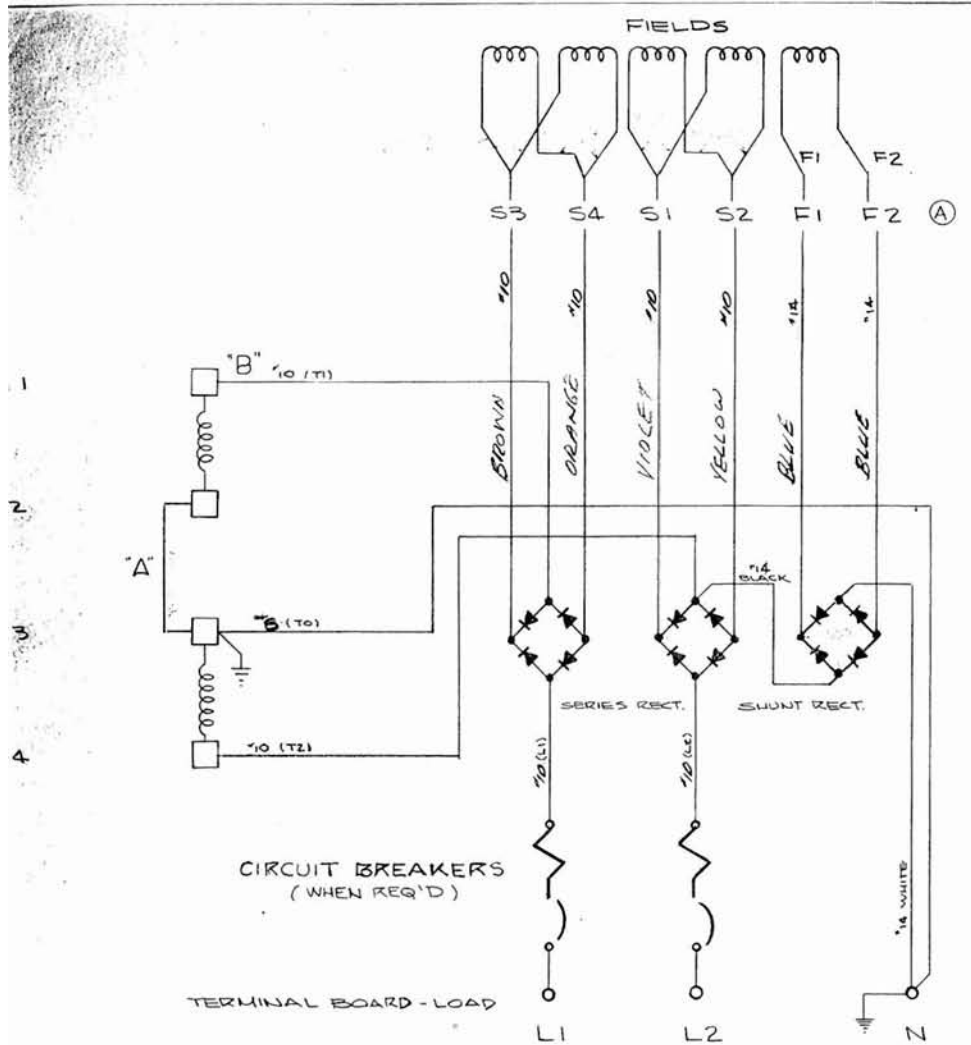
DATES

PART OR ASSY

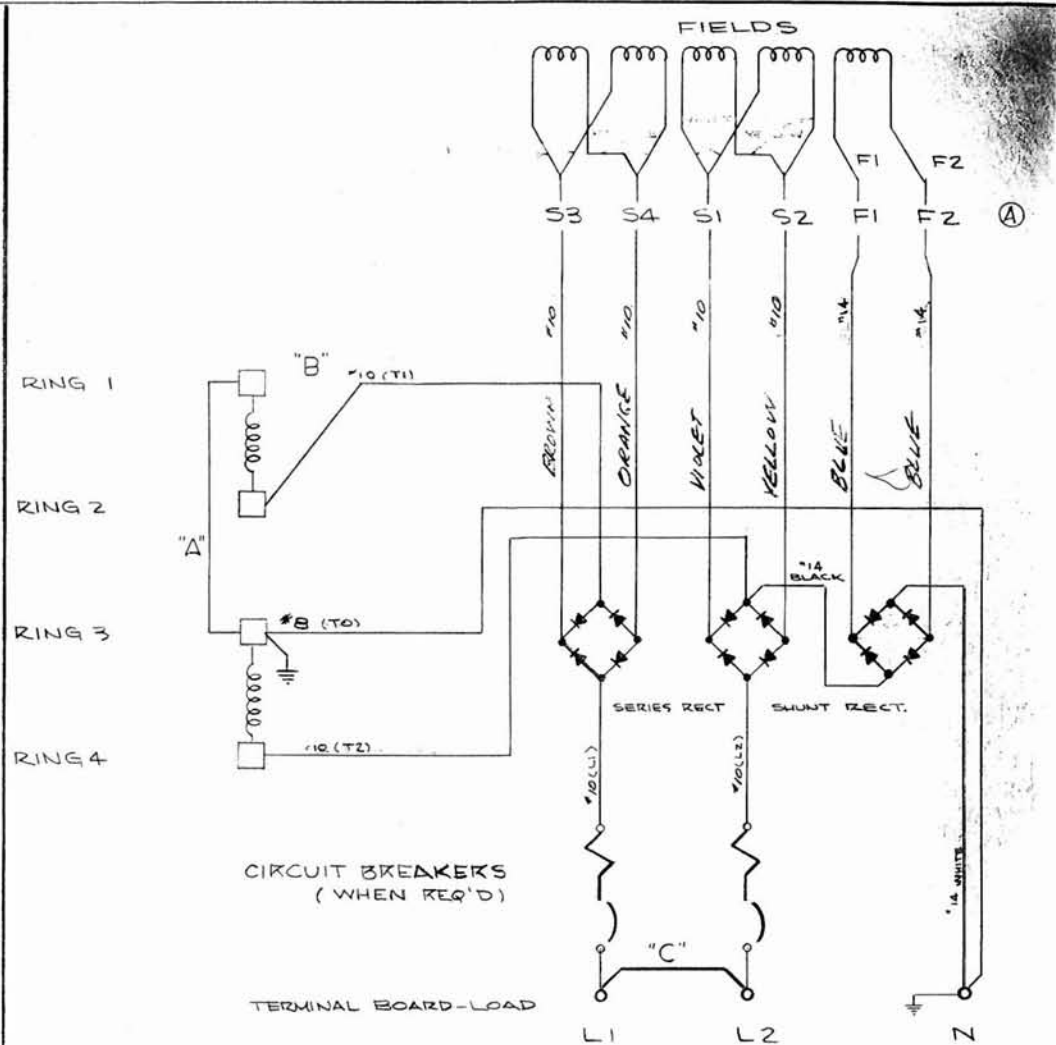
1326 04/24/73 08/27/73

EAWASHER 3/8 INT TT

EXT-QTY	QTY	U/M	CD	PART NUM.	DESCRIPTION	DRAWING NUM
	25	1 EA	P	04612	NUT3/8-16 HX	
	25	1 EA	FR	W -00043	S -07373 BEARING RETAINER	1.000 EA
	50	2 EA	P	09215	SCRW1/4-20X1/2HH SELF-TAP	
	50	2 EA	P	01114	WASHER1/4 INT TT	
		1 EA	F*	G -05472	ASSY PANEL BACK	
	150	6 EA	P	09216	SCRW3/8-16X3/4HH SELF-TAP	
	150	6 EA	P	01184	WASHER3/8FLT	
	150	6 EA	P	01116	WASHER3/8 INT TT	
	25	1 EA	FR	S -06927-01	SS-34010 PANEL TOP	.040 EA C6205 1
	175	7 EA	P	04957	TINNERMAN	
	175	7 EA	P	02325	SCRW1/4-20X3/8RHSM	
	50	2 EA	P	02085	SCR 10-24 X 1/2 RHSM	
	50	2 EA	P	05803	NUT NO10-24 HX LK	
	50	2 EA	P	01019	WASHER, BRASS	
	25	1 EA	F	G -05184-03	ASSY, PANEL FRONT	E 6631
	50	2 EA	P	03590-01	SCRW3/8-16X2-1/2HH	
	100	4 EA	P	05809	NUT3/8-16 HX LK	
	100	4 EA	P	01185	WASHER3/8 FLT	
		1 EA	F*	CB-00024	CRATING BILL	
		1 EA			PAINT MISC.	



240 VOLT OPERATION



120VOLT OPERATION

REVISED	12-5-74	FLT
12 AWG	3-4-71	JFP
REVISED COLOR CODE	8-10-70	JFP
THYRISTOR ACROSS 125	1-15-70	JFP
ADDED WHEN REQ'D	4-16-69	JFP
RE WIRE WAS #12	10-24-68	J.F.P.
TECH SCOP & REWAS OREY & CROOK BULK	10-11-67	R.L.T.
WAS ORIGINALLY	DATE	CHK'D

NO. REQ'D.	MICROFILM DATA	JUL 20 377
		JUL 10 1970

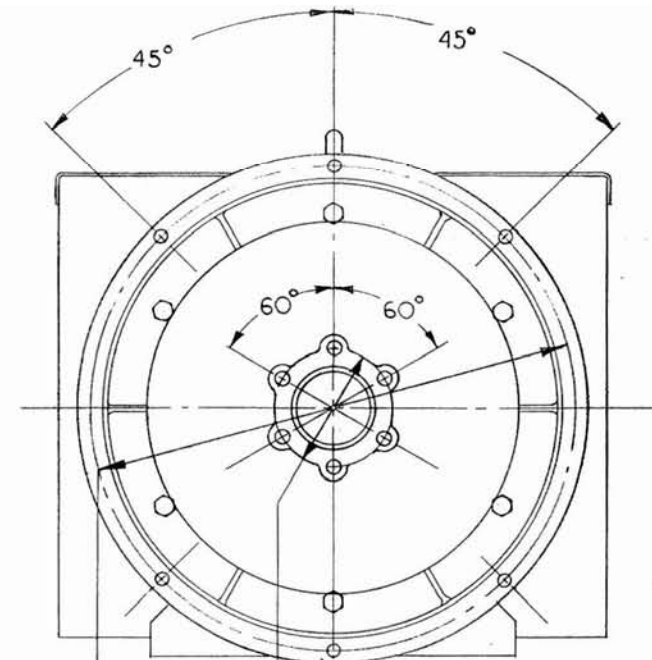
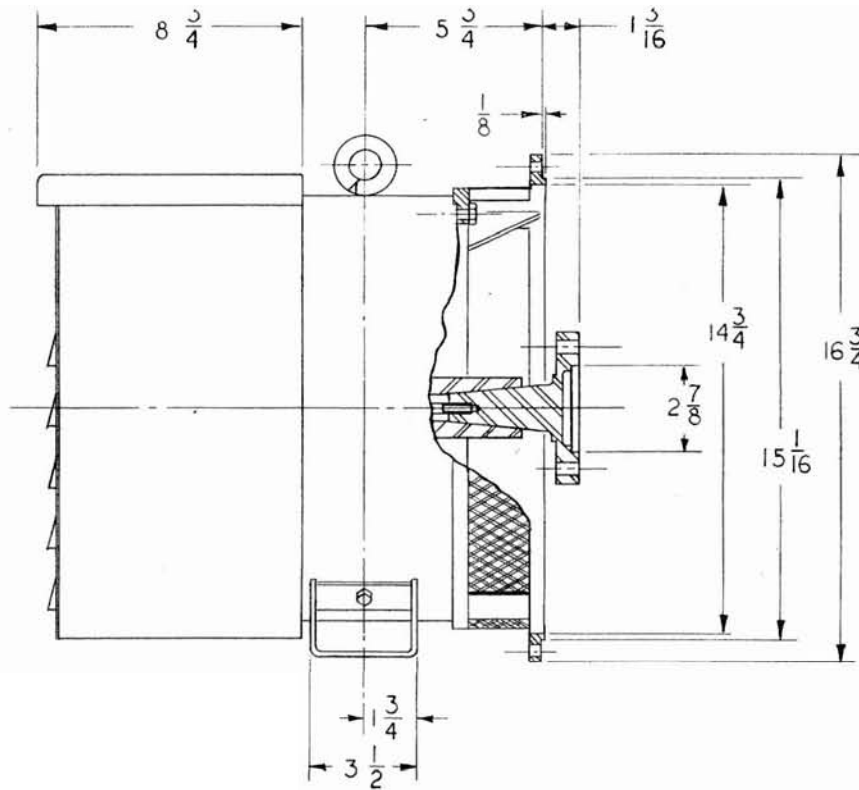
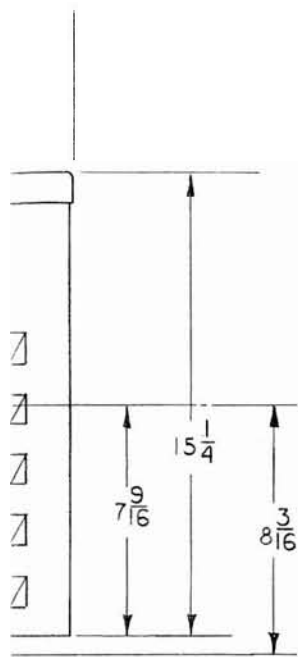
REMOVE ALL BURRS
BREAK ALL SHARP
MACHINED EDGES

MATERIAL

RECONNECTION INSTRUCTIONS:
WHEN CHANGING FROM 120/240V TO 120V
ONLY 3 CONNECTIONS ARE AFFECTED, THEY
ARE LETTERED "A", "B" & "C".
JUMPER "C" - NOT USED ON 250V CONNECTIONS

Z-1881

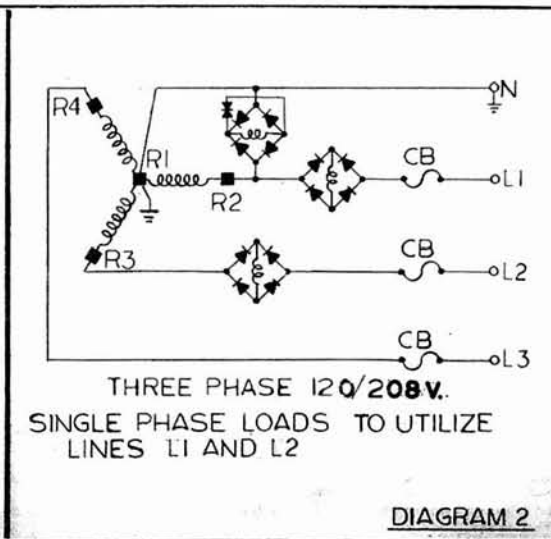
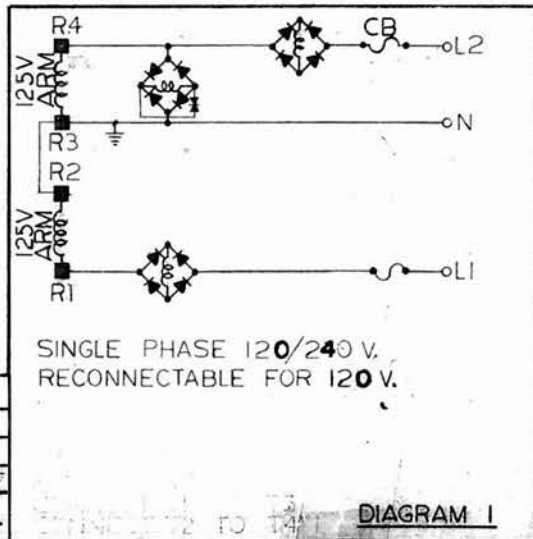
WIRING DIAGRAM	
SCALE ~	MODEL NO.
DATE 8-22-67	PART NO. IC-5866
DWN T.C.G.	CHK'D
WINPOWER MFG. CO. NEWTON, IOWA	



(6) $\frac{15}{32}$ DIA HOLES ON 4 DIA B.C.

(6) $\frac{13}{32}$ DIA HOLES ON 16 DIA B.C.

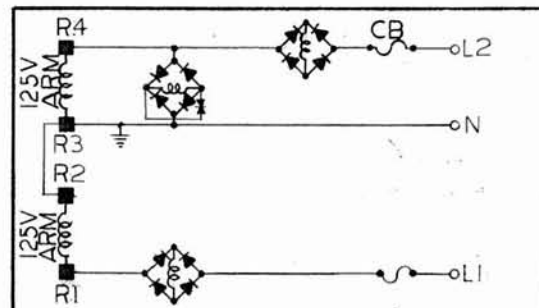
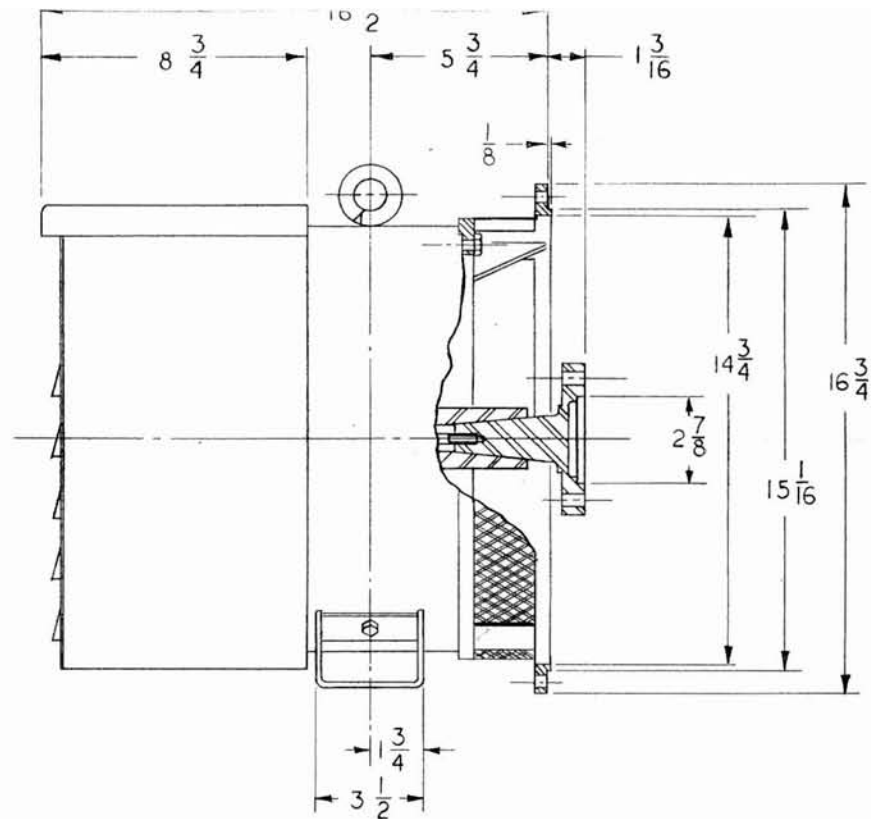
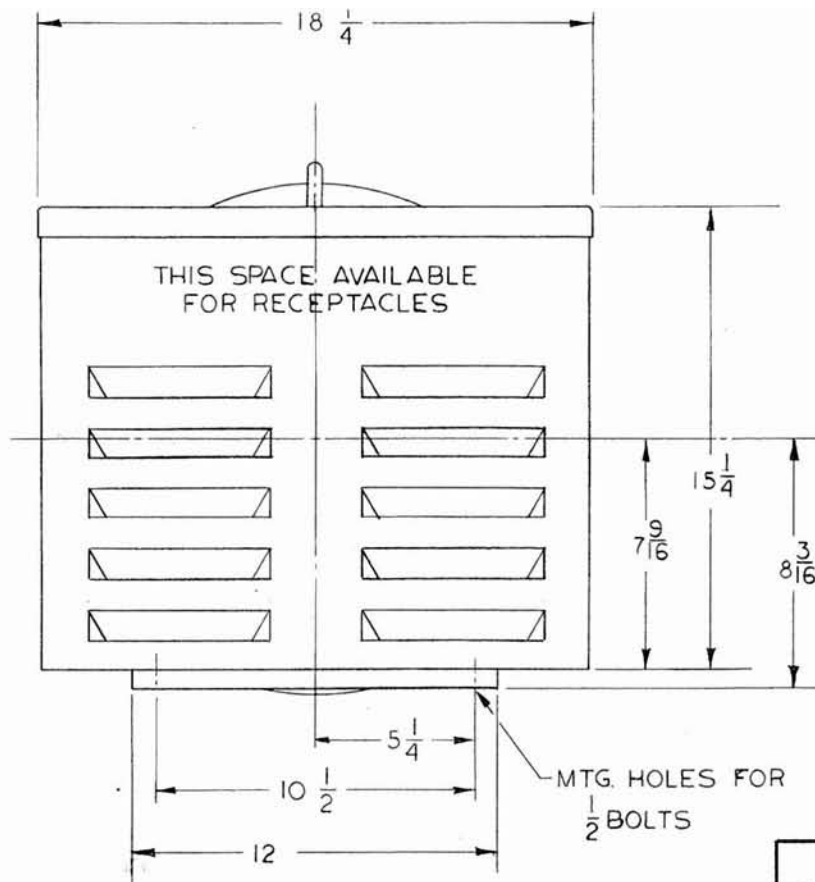
MTG. HOLES FOR $\frac{1}{2}$ BOLTS



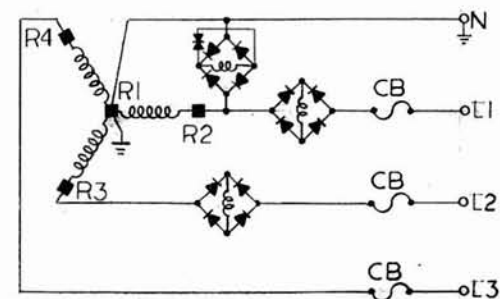
- CM605L4-C
- CM605L4-D
- CM504L4-CX5
- CM504L4-DX5
- CM504L4-EX5

OUTLINE DRAWING	
SCALE 1/4	MODEL NO.
DATE 3-6-67	PART NO. IF-42
DWN TCG	CR'D
WINPOWER MFG. CO. NEWTON, IOWA	

IF 4253 1 of 4



SINGLE PHASE 120/240 V.
RECONNECTABLE FOR 120 V.



THREE PHASE 120/208 V.
SINGLE PHASE LOADS TO UTILIZE
LINES L1 AND L2

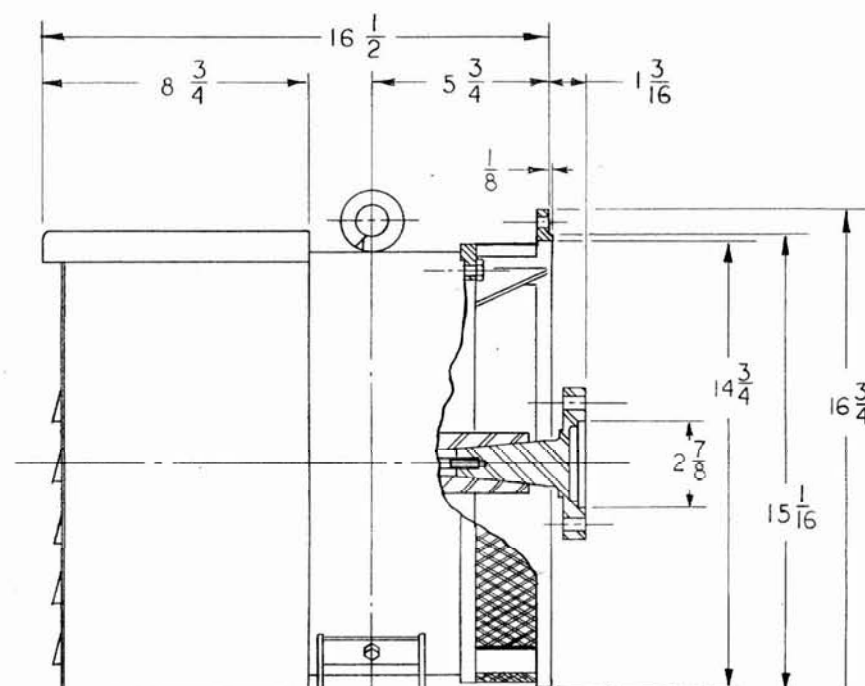
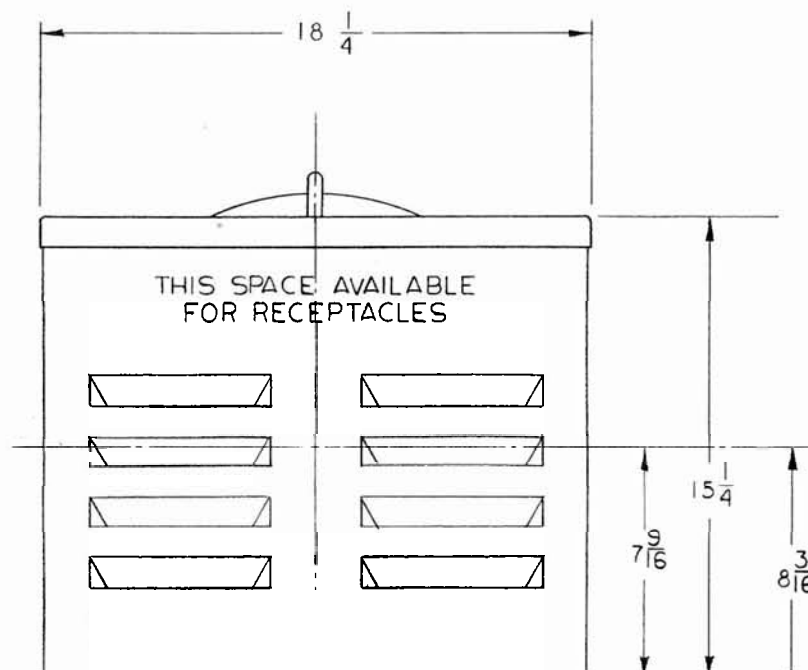
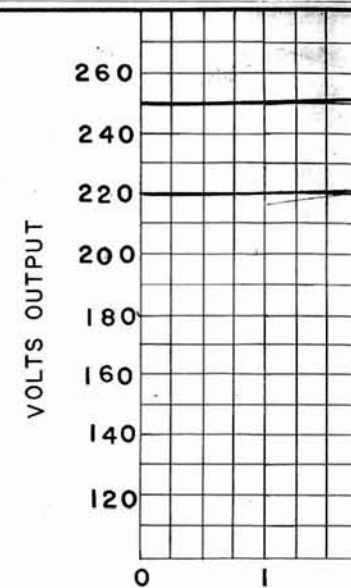
A	MODEL CHG	5-9-69	J. F. P				
NAME	WAS ORIGINALLY	DATE	CHK'D	CHG. REQUEST			JUL 25 1977
							JUL 10 1967
TOLERANCE ON DIMENSIONS - NOT OTHERWISE SPECIFIED				DECIMAL \pm	FRACTIONAL \pm	ANGULAR \pm	REMOVE ALL BURRS BREAK ALL SHARP MACHINED EDGES
				NO. REQ'D.	MATERIAL		MICROFILM DATA

DIAGRAM 1

DIAGRAM 2

MODEL	ADAPTER	ENGINE	WATTS CONT.*	VOLTS	AMPS	FREQ	PHASE	P.F.	WEIGHT	DIAGRAM
CM 605L4-C	INCLUDED IN WINPOWER PRICE	SR2	6500	120/240	54/27	60 CPS	SINGLE	1.0	220	1
CM 605L4-D		SR2	6500	120/208	22.5	60 CPS	THREE	0.8	220	2
CM 504L4-CX5		SR2	5400	115/230	47/23.5	50 CPS	SINGLE	1.0	220	1
CM 504L4-DX5		SR2	5400	120/208	18.7	50 CPS	THREE	0.8	220	2
CM 504L4-EX5		SR2	5400	220/380	10	50 CPS	THREE	0.8	220	2

* NOTE: HORSEPOWER OF SR2 ENGINE LIMITS OUTPUT TO 6500 WATTS AT 60 C.P.S. AND 5400 WATTS AT 50 C.P.S.
ALTERNATOR CAPABLE OF 7.5 KW AT 60 CPS AND 6.2 KW AT 50 CPS

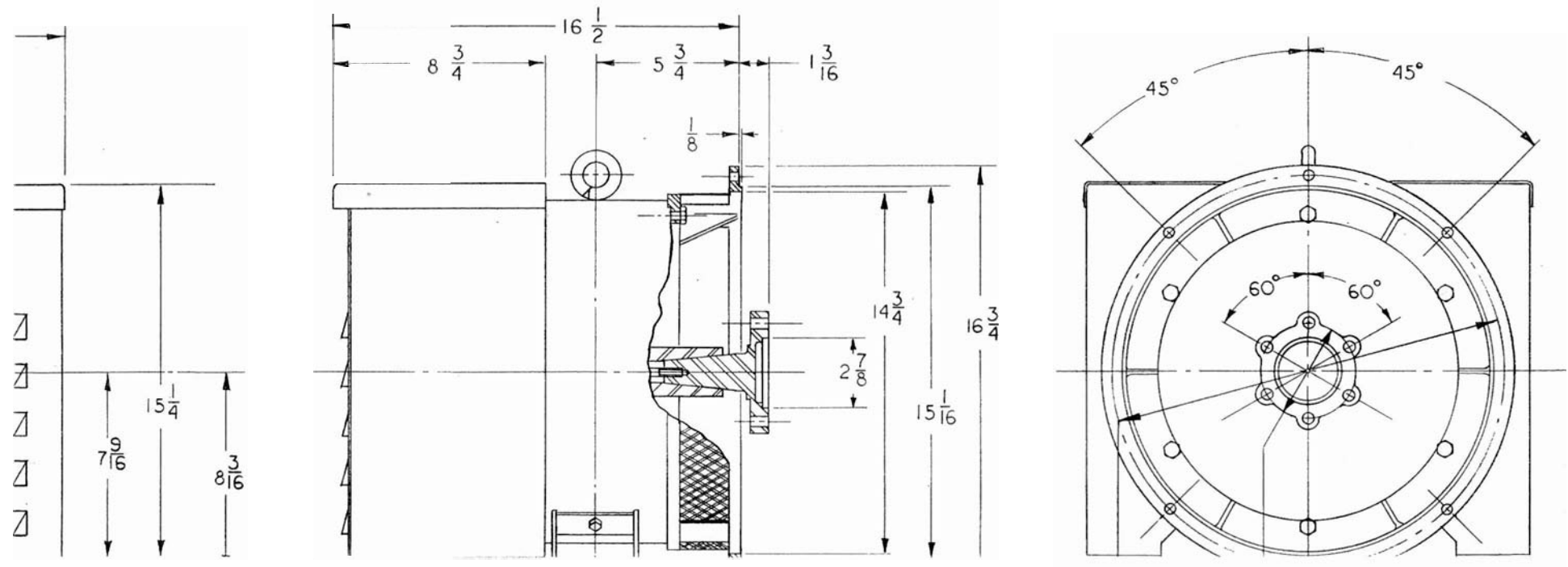
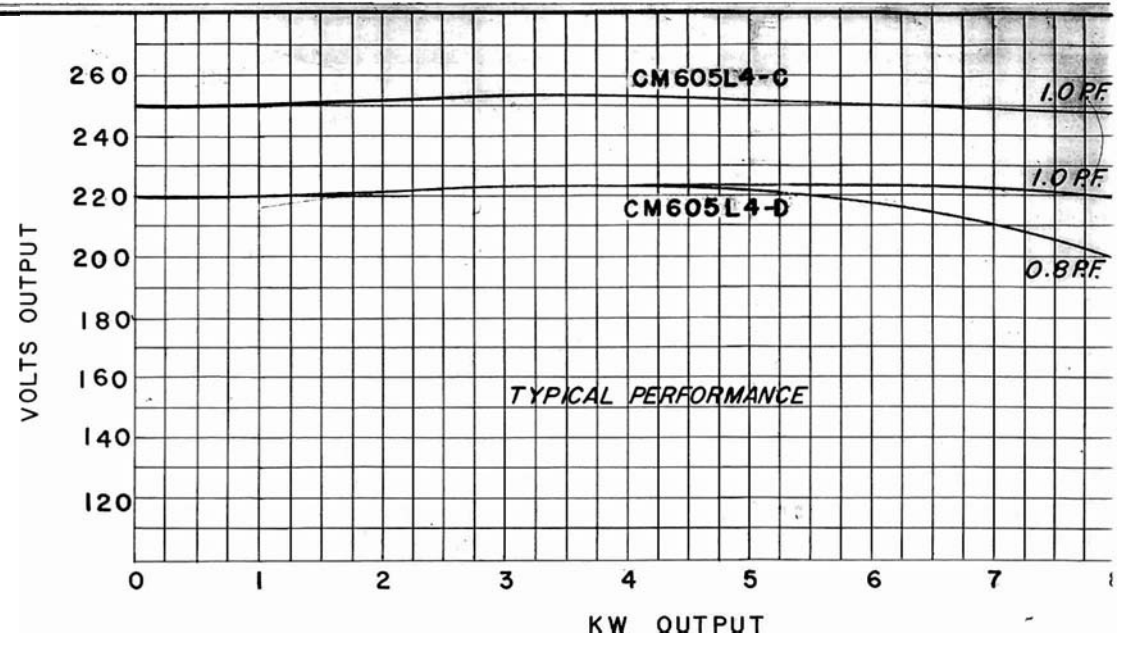


IF 4253 3 of 4

	AMPS	FREQ	PHASE	P.F.	WEIGHT	DIAGRAM
1)	54/27	60 CPS	SINGLE	1.0	220	1
3)	22.5	60 CPS	THREE	0.8	220	2
1)	47/23.5	50 CPS	SINGLE	1.0	220	1
3)	18.7	50 CPS	THREE	0.8	220	2
1)	10	50 CPS	THREE	0.8	220	2

TO 6500 WATTS AT 60 CPS.

AMPS AND 6.2 KW AT 50 CPS



IF 4253 4 of 4