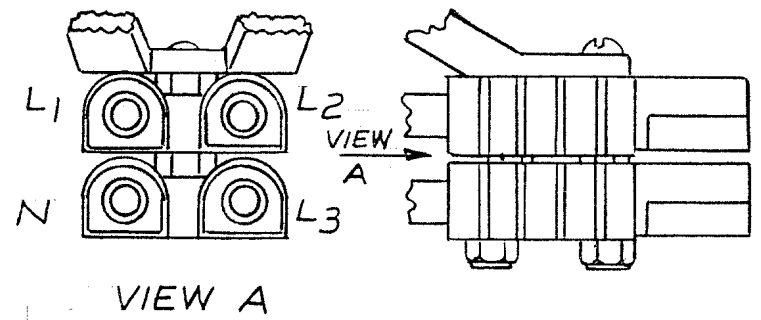


SEE ASSEMBLY INSTRUC. SHEET 2 OF 2 FOR WIRE SPEC



11	EE-2330-6	BUSHING #6 WIRE	4
10	EE-2330-3	BUSHING #4 WIRE	4
9	EE-2330-2	BUSHING #2 WIRE	4
8	EE-2330-1	BUSHING #1 WIRE	4
7	2205	SCREW 1/4-20x3	2
6	EE-2329	HANDLE	1
5	EE-2328	CONTACT	4
4	4758	1/4-20 NUT	1
3	4610	5/16-18 NUT	4
2	EE-2327	HOUSING	2
1	5276	NYLOK NUT 1/4-20	2
REF	PART NO	DESCRIPTION	QTY

B	#7 WAS 2203	12-14-81	KH	175-81				
A	ADDED 8-11	10-30-78	KH					
CHANGE	WAS ORIGINALLY	DATE	CHK'D.	CHG. REQUEST				
TOLERANCE ON DIMENSIONS NOT OTHERWISE SPECIFIED				DECIMAL ± FRACTIONAL ± ANGULAR ±	REMOVE ALL BURRS BREAK ALL SHARP MACHINED EDGES	NO. REQ'D. _____		
						MICROFILM DATA _____		
				<b>MATERIAL</b> _____				

ASSY INSTRUC.	
SCALE NONE	MODEL NO. _____
DATE 12-15-77	PART NO. 1E-10734-1
DWN KH	CHK'D. _____
<b>WINPOWER CORPORATION</b> NEWTON, IOWA 50208	

ASSEMBLY INSTRUCTIONS

CRIMPING TOOL

- A. Anderson Power Products
- B. ETC Model HHS Hydraulic Crimper

1. READ INSTRUCTIONS COMPLETELY PRIOR TO ASSEMBLING
2. Verify that all items and the correct quantities are in the package by checking off each item against the Table of Contents shown on Sheet #1.
3. Install contacts (#5) on to electrical conductor (see conductor specification below) by soldering, using a good grade of resin core solder or an appropriate compression crimper as recommended by Winpower.

**WARNING!!! SOLDER ONLY COPPER CONDUCTORS AND NEVER USE ACID CORE SOLDER**

4. Assemble items #1, #2, #3, #4, #6 and #7 exactly as pictured in Sheet #1. This makes the portable plug assembly without the conductors.
5. Insert conductors with installed contacts into proper cavities as shown in Sheet #1.

RECOMMENDATIONS

1. Conductors Minimum Size		MODEL	
		25/15PTD/5	45/25PTD/5
a. Rubber		#8 AWG	#4 AWG
b. Neoprene		#8 AWG	#4 AWG
c. Vinyl		#8 AWG	#6 AWG
d. Hypalon		#8 AWG	#6 AWG
e. Silicone		#10 AWG	#6 AWG

NOTE: Sizes are based upon maximum lead length of 10 feet. Greater lengths must be reviewed for voltage drop and size increased per codes and regulating bodies (City, Town, State, Province & Federal) bodies that are in effect for the installation.

						<b>ASSEMBLY INSTRUCTIONS</b>		
CHANGE	WAS ORIGINALLY	DATE	CHK'D.	CHG. REQUEST		SCALE	MODEL NO.	
						9-20-77	IE-10734-1	
				NO. REQ'D.	MICROFILM DATA	DATE	PART NO.	
						S.F.	IE-10734-1	
						DWN	CHK'D.	
TOLERANCE ON DIMENSIONS NOT OTHERWISE SPECIFIED		} DECIMAL ± } FRACTIONAL ± } ANGULAR ±		REMOVE ALL BURRS BREAK ALL SHARP MACHINED EDGES	<b>MATERIAL</b>			<b>WINPOWER CORPORATION</b> NEWTON, IOWA 50208