

WINPOWER

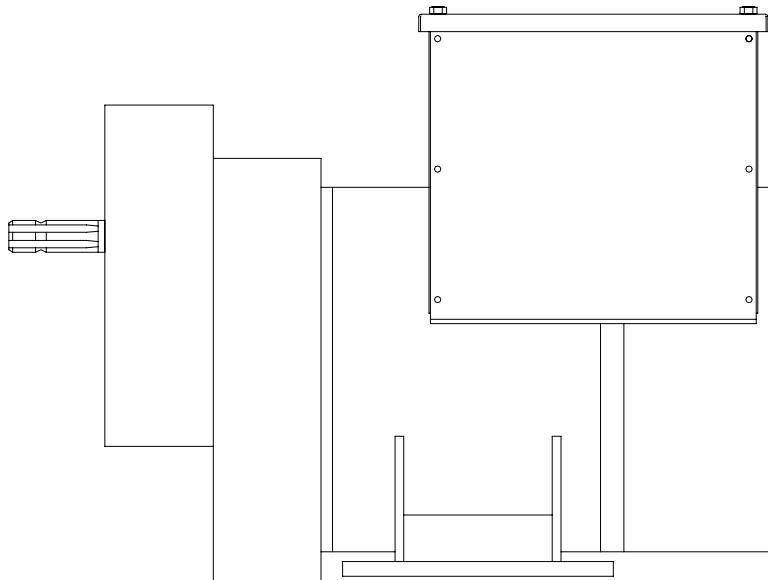
*A Division of **DTE** Dyna Technology Inc*

PARTS LIST

60/46PTCDR

(LEROY SOMER)

(GM44.1S1/60L)



LEROY SOMER PARTS



4.8 - Tightening torque

4.8.1 - Class 6/8 screws

Screw	M4	M5	M6	M8	M10	M12	M14	M16	M20
Torque : Nm	1,8	3,6	6,2	15,2	24	52	83	130	254

4.8.2 - Class 8/8 screws

Screw	M4	M5	M6	M8	M10	M12	M14	M16	M20
Torque : Nm	2,5	4,8	8,3	20	40	69	110	170	340

4.8.3 - Class 6/8 & 8/8 screws (tightening without pressure or electrical tightening)

Screw	M4	M5	M6	M8	M10	M12	M14	M16	M20
Torque : Nm	1	2,5	4	10	20	35	55	85	170

5 - REPLACEMENT PARTS

5.1 - First maintenance parts

Emergency kits are also available for the gearboxes.

They comprise the following :

Ref	Description	Qty	GT 41.1 - TF.1/TM1 . 27	Code
559	Input wheel bearing	2	6307	-
567	Shaft bearing	1	3308 D	-
558	Lipseal	1	35 x 47 x 7	-
572	Lipseal	1	50 x 65 x 8/10	-

Ref	Description	Qty	GT 42.1 - TF.1/TM1 . 38	Code
559	Input wheel bearing	2	6307	-
567	Shaft bearing	1	22309 CC	-
558	Lipseal	1	35 x 47 x 7	-
572	Lipseal	1	55 x 68 x 8/10	-

Ref	Description	Qty	GT 44.1 - TF.1/TM1 . 70	Code
559	Input wheel bearing	2	6309	-
567	Shaft bearing	1	6411 C3	-
558	Lipseal	1	45 x 62 x 8	-
572	Lipseal	1	70 x 100 x 10	-

5.2 - Technical helpline

Our technical helpline will be able to deal with all your enquiries.

When ordering replacement parts, please indicate the machine type, number and information shown on the nameplate.

Contact :
 LEROY-SOMER MOTORS
 Usine de Sillac/Alternateurs
 16015 ANGOULEME CEDEX - FRANCE
 Tel. : (33) 05.45.64.45.64
 Helpline : (33) 05.45.64.43.69
 Fax : (33) 05.45.64.43.24

References for the various parts can be found on the exploded views and their description on the nameplate.

Our large network of service centres can supply the necessary parts without delay.

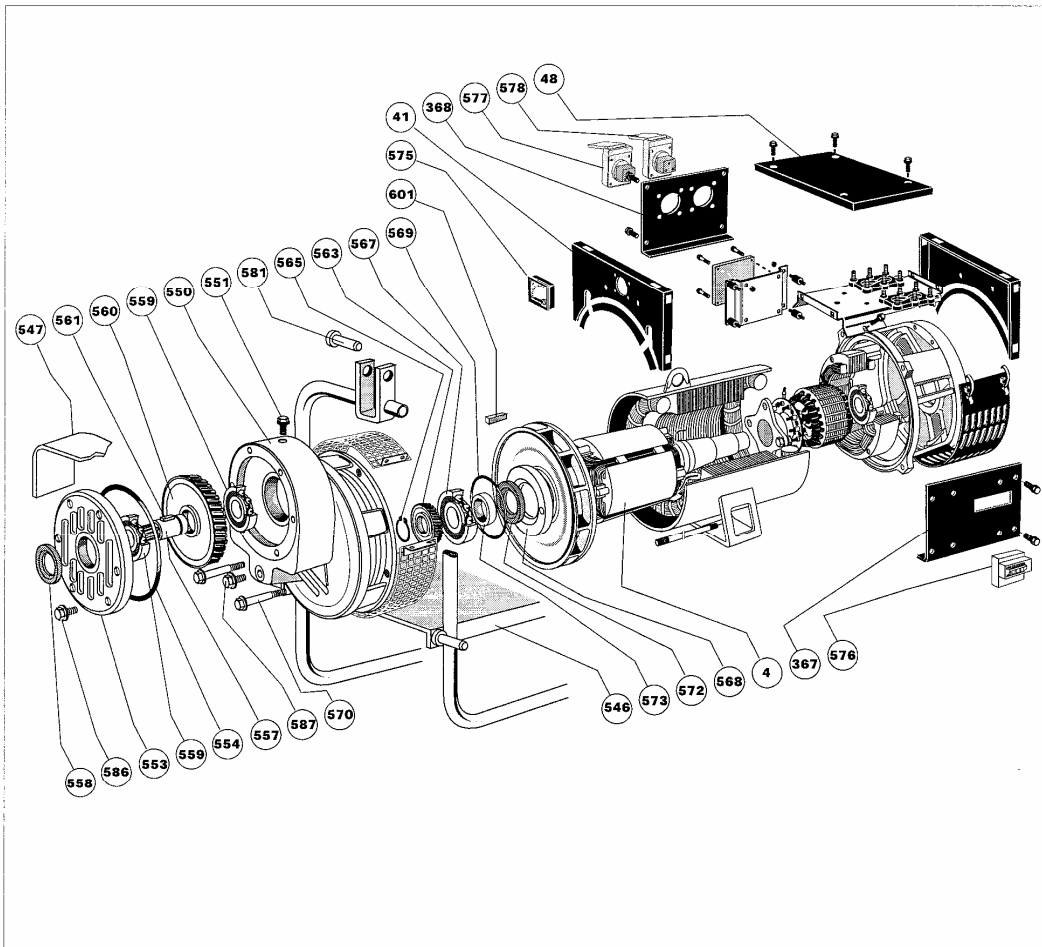
To ensure optimum machine operation and safety, we recommend using original manufacturer replacement parts.

If not, the manufacturer cannot be held responsible for any damage.

LEROY SOMER PARTS

PARTNER MAINTENANCE
GEARLEC / TRACTELEC . 27, 38, 70 kVA

5.3 - Exploded view, parts list for GT41.1, 42.1,44.1 - TF.1/TM.1- 27 - 38 - 70.



Ref.	Qty	Description	Ref.	Qty	Description
4	1	Rotor assembly	554	1	Sealing ring
41	1	Front part	565	1	Internal circlips
48	1	Upper part of cover	567	1	Bearing
367	1	Inspection door, circuit-breaker side	568	1	Inner bearing retainer
368	1	Cover door, socket side	569	1	Sealing ring
546	1	Chassis	572	1	Lipseal
547	1	Universal joint protection	573	1	Ring
550	1	Secondary housing	575	1	Voltmeter
551	1	Breather plug	576	1	Circuit-breaker
553	1	Housing shield	577	1	3-phase socket
557	1	Splined input shaft	578	1	Single phase socket
558	1	Lipseal	581	1	Coupling shaft
559	2	Bearing	586	1	Level screw
560	1	Input wheel	587	1	Drain plug
561	1	Key	601	1	Key
563	1	Pinion			

RECEPTACLE PANEL ASSEMBLY

39	80733-001	2.75FT	TAPE RED
38	44039-000	1	LUG
37	59320-000	1.84FT	TAPE GREEN
36	80733-000	.92 FT	TAPE WHITE
35	64638-000	2.03FT	LEAD WIRE #10 GREEN
34	13459-000	1.63FT	LEAD WIRE #18 RED
33	81963-001	2	LUG
32	4155-000	1	LUG
31			
30	91450-000	7.84FT	LEAD WIRE #1 BLK
29	439-000	1	HHCS, 1/4-20 x 1
28	43661-000	3.09FT	LEAD WIRE #4 BLK
27	91779-000	5.05FT	LEAD WIRE #10 BLK
26	91815-000	3.09FT	LEAD WIRE #14 BLK
25	91321-002	3	LUG
24	48602-003	2	LUG
23	21850-002	2	LUG
22	7547-002	2	LUG
21	479-000	21	LW, 1/4
20	21698-001	4	#10 SHEET METAL SCREW
19	458-000	2	HN 5/16-18 (USED AS SPACER)
18	91457-001	1	LUG
17	47517-000	2	LOCK NUT
16	A-61993-001	2	RHMS 1/4-20 x 3 1/2
15	A-94980-001	2	THREDSTUD; 1/4-20 x 5/8
14	638-000	6	HN 1/4-20
13	4516-000	6	LW, 1/4
12	463-000	4	HHCS, 1/4-20 x 1/2
11	B-64045-002	2	STRIP, MOUNTING
10	A-300117	2	SUPPORT, CONNECTOR
9	A-91447-005	1	CIRCUIT BREAKER (200 AMP, 240 VOLT, 2 POLE)
8	A-63708	1	TERMINAL LUG
7	(A)G-7213-1	1	COVER ASSEMBLY
6	57325-000	1	RECEPTACLE, 50 AMP, 250 VOLT
5	50766-000	1	RECEPTACLE, 20A, 125 VOLT
4	A-91286-001	1	CB, 20 AMP, 1P
3	A-57030-000	1	CB, 50 AMP, 2P
2	EE-2331	2	HOUSING, 350 AMP
1	B-300181	1	PANEL, SIDE RECEPTACLE
ITEM	PART NO	QUAN.	DESCRIPTION

RECEPTACLE PANEL ASSEMBLY CONTINUED

55	EE-2332-5	4	TIPS, 350 AMP x 1/0
54	EE-2330-1	3	REDUCING BUSHING 1/0 TO #1 AWG
53	91382-001	1	LUG
52	A-300102	1	FREQUENCY METER
51	5113-000	2	HEX NUT #8-32
50	6376-000	2	SPLIT LOCK WASHER #8
49	511-000	2	FLAT WASHER #8
48	92009-000	2	RHMS # 8-32 X 3 1/2
47	A-92495-000	20	RETAINING NUT 1/4-20
46	466-000	20	HHCS 1/4-20 x 3/4
43	43694-000	2	LUG
42	B-300182	1	PANEL, SIDE (NOT SHOWN)
41	B-300180	1	PANEL, FRONT
40	B-300179	1	PANEL, REAR
ITEM	PART NO	QUAN.	DESCRIPTION

Leroy Somer North America
 Division Emerson Industrial Automation
 Tel (731) 967-4709
 Fax (731) 967-3114

Winpower Inc.
 225 South Cordova Ave.
 LeCenter, MN 56057
 Tel 507-357-6700
 Fax 507-357-6580

