

# WINPOWER CORPORATION

## TRACTOR DRIVEN ALTERNATOR 45,000 WATTS' A.C. 1800 R.P.M.

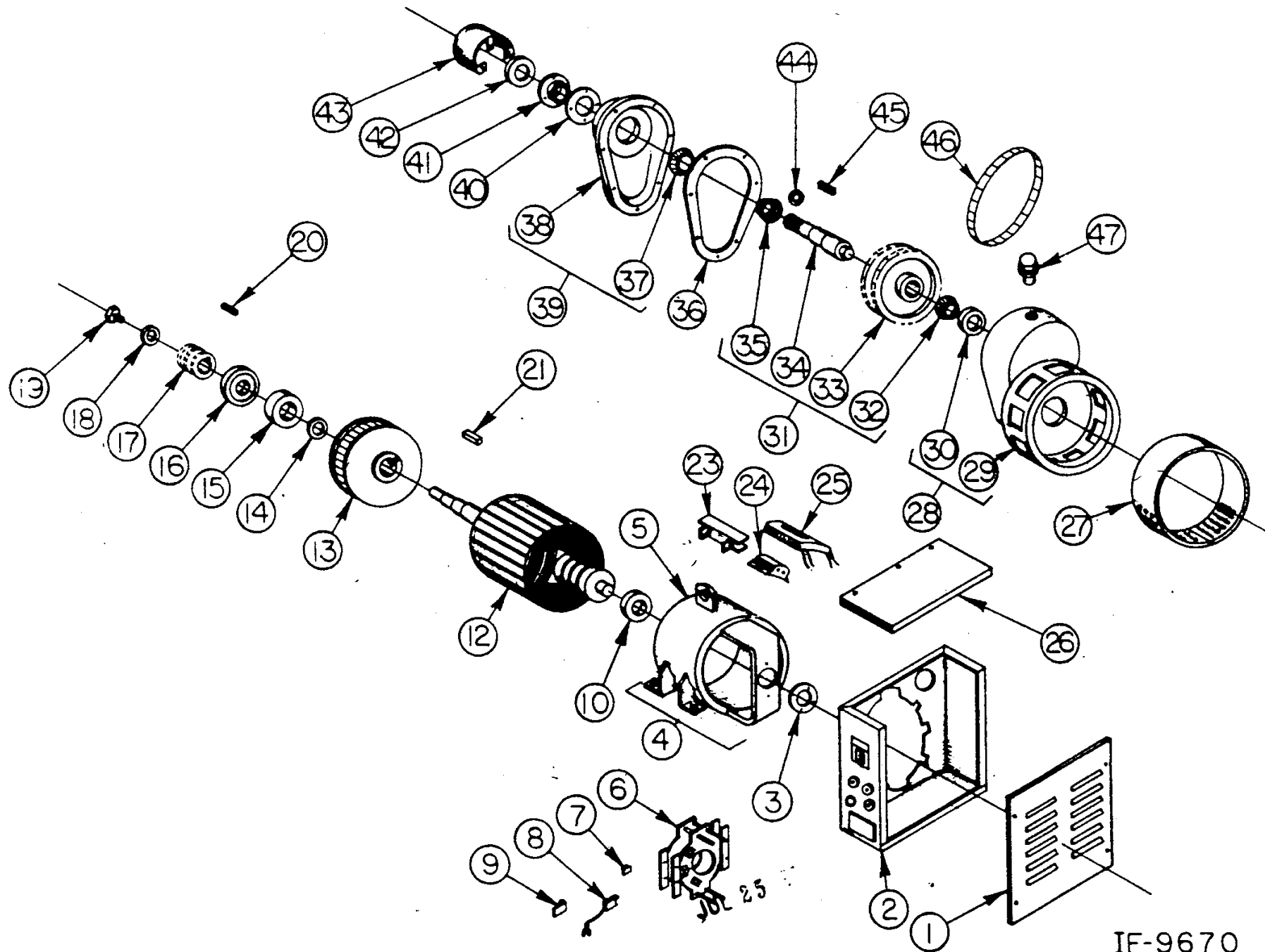
REF. NO.	PART DESCRIPTION	MODEL 45/25 PT2 TYPE 1		MODEL 45/25 PT2 TYPE 2	
		PART NO.	REQ'D UNIT	PART NO.	REQ'D UNIT
1	Panel Front	S-5851-1	1		
2	Panel Back Assembly	G-5434-21	1		
3	Bearing Retainer	W-43	1		
4	Field Frame Assembly	G-5432-21	1		
5	Field Frame	G-6362	1		
6	Brush Gear Assembly	G-5430-1	1		
7	Tinnerman	4996	6		
8	Brush	Y-51	9		
9	Brush Spring	G-3422	9		
10	Bearing-Slip Ring End	D-8	1		
11	N.A.				
12	Armature	G-4766-72	1		
13	Fan Assembly	G-5878-1	1		
14	Washer	S-7019	1		
15	Bearing - DE	D-3	1		
16	Grease Seal	TE-888	1		
17	Sprocket-Lower-3 Row	S-6350-1	1		
18	Washer	1211	1		
19	Screw	11508	1		
20	Key - Sprocket	S-7467-12	1		
21	Key - Fan	S-2056-90	1		
22	N.A.				
23	Coil Shield	J-635	8		
24	Field Pole	G-5037-1	4		
25	Field Coil	H-1094	4		
26	Panel Top Cover	S-7623	1		
27	Wrapper	S-7037	1		
28	Gear Case Housing Assy.	G-5922	1		
29	Housing	I-885	1		
30	Bearing Cup	D-27	1		
31	Drive Shaft Assembly	G-5925	1		
32	Bearing Cone	D-28	1		
33	Sprocket 3 Row	S-7301	1		
34	Shaft 6 Spline 1-3/8	N-593-4			
35	Bearing Cone	D-70	1		
36	Gasket	X-197	1		
37	Bearing Cup	D-71	1		
38	Gear Case Cover	I-884	1		
39	Gear Case Cover Assy.	G-5924	1		
40	Shim .001 Thick Amber	X-198-1			
a	Shim .002 Thick Red	X-198-2			
b	Shim .005 Thick Blue	X-198-3			
c	Shim .010 Thick Brown	X-198-4			
d	Shim .020 Thick Yellow	X-198-5			
41	Retainer Plate	I-883	1		
42	Seal - Upper	X-201	1		
43	PTO Guard	S-7606	1		
44	Washer - Hardened	S-7046	1		
45	Key	S-2056-86	1		
46	Drive Chain-3 Row	G-6078-1	1		
47	Vent Cap	10801			

G-7283 →

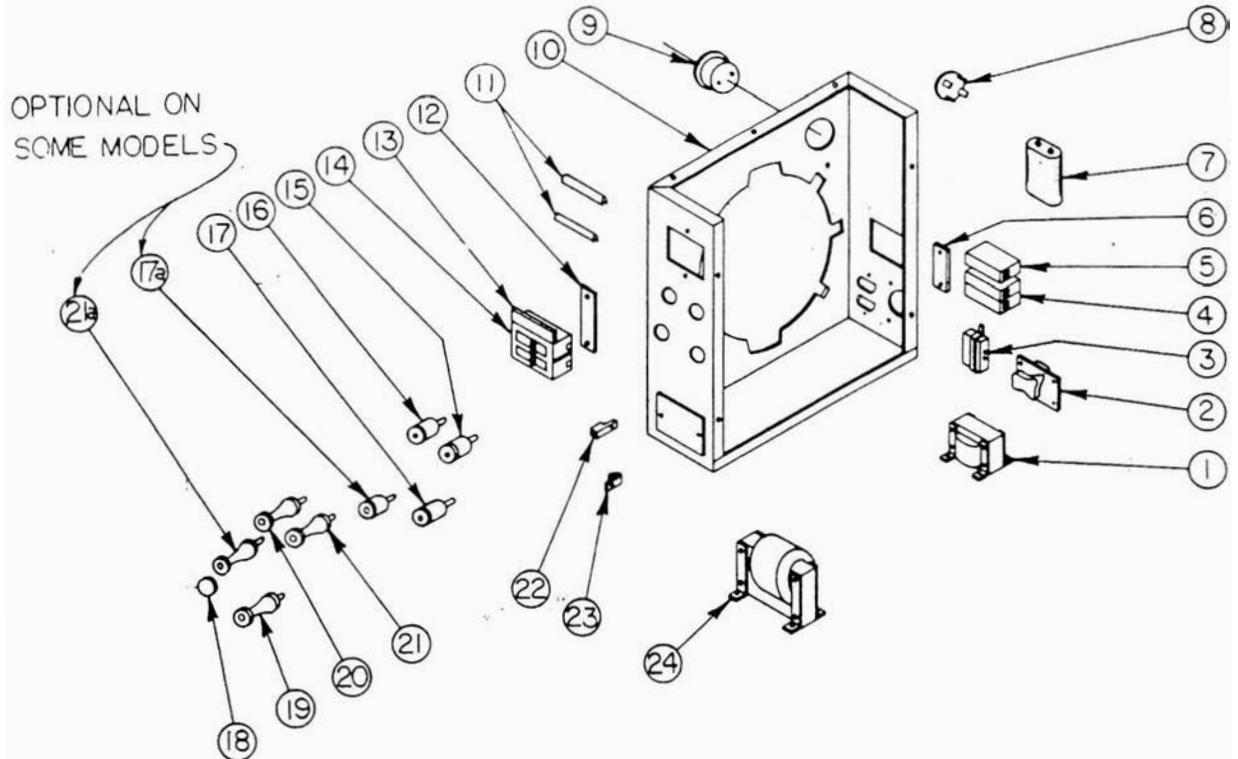
Wiring Diagram IE-9660 Last Rev. None IE-9660 Last Rev.(A)  
 Parts Drawing IE-9670 PL-1462

Note-Part numbers and quantity are the same in all columns,  
 but for the exceptions.  
 PL-1462-3  
 (Page 1 of 2)

IE-9670



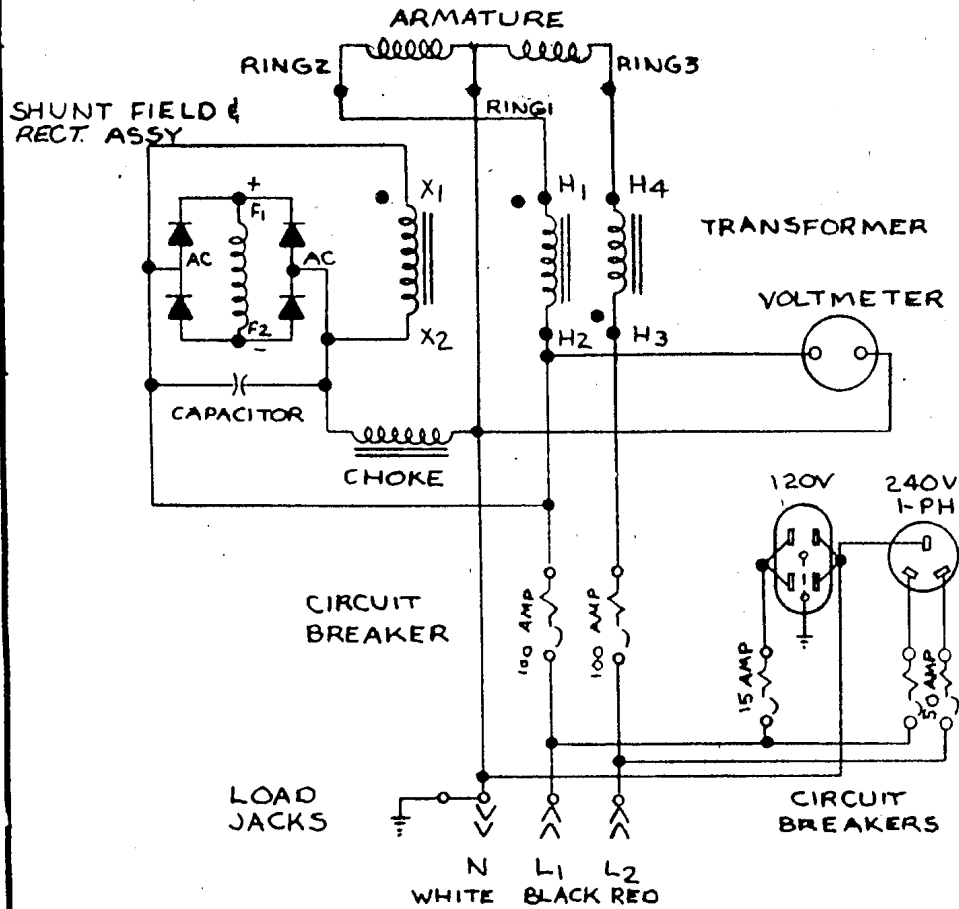
IE-9670



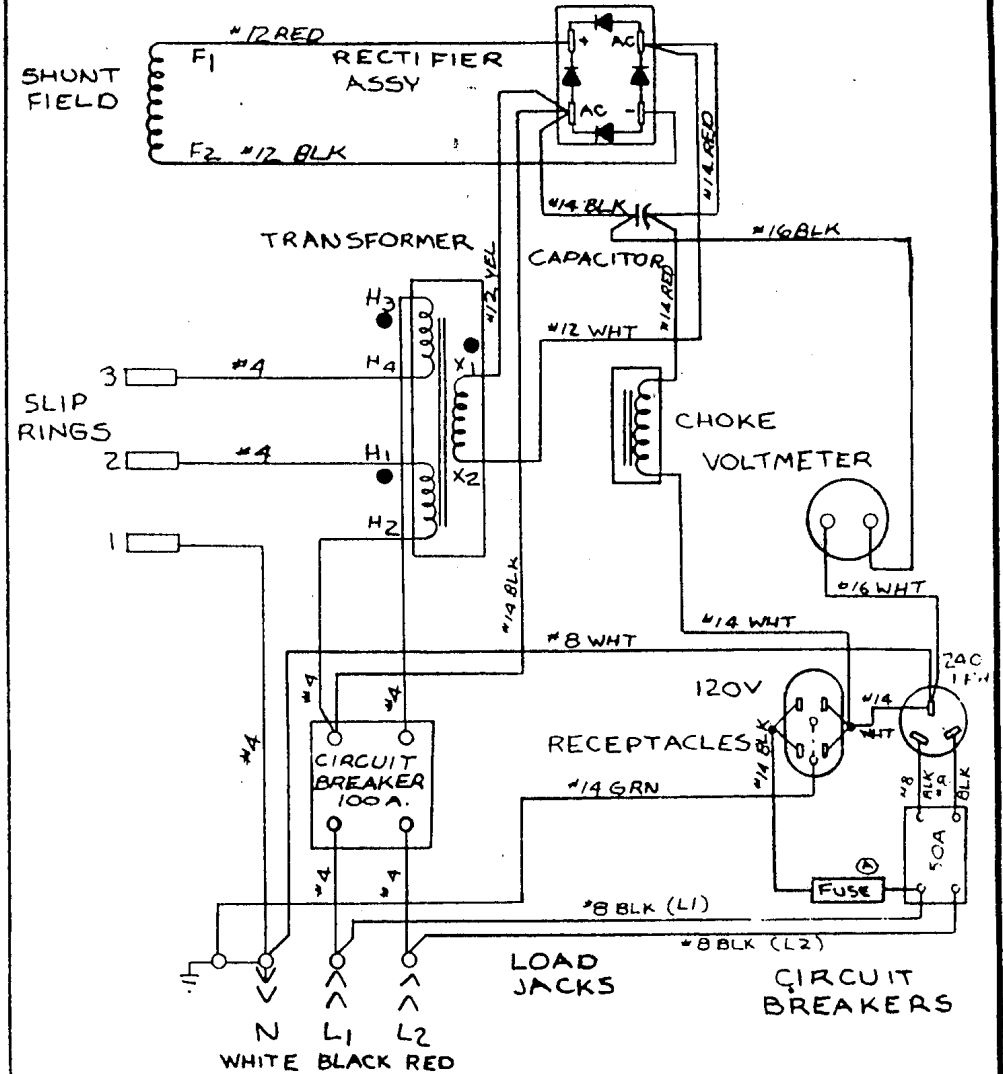
REF. NO.	PART DESCRIPTION	G-5434-21 TYPE 1		G-5434-21 TYPE 2	
		PART NO.	REQ'D UNIT	PART NO.	REQ'D UNIT
1	Choke	EE-1980	1		
2	Receptacle - 250 Volt	EE-399	1		
3	Receptacle - Duplex	EE-323	1		
4	Circuit Breaker 50 Amp	EE-1805	1		
5	Circuit Breaker 15 Amp	EE-1830	1	Fuse EE-447-1	1
6	Mounting Plate	S-5027-1	1	& Fuse Holder	
7	Capacitor	EE-1539	1	EE-448	
8	Rectifier Assy Shunt	EE-2214	1		
9	Voltmeter	VM-716	1		
10	Panel Weld Assembly	G-5838-6	1		
11	Insulator	W-203	2		
12	Mounting Plate	S-5027-1	1		
13	Filler Plate Breaker	EE-779	1		
14	Circuit Breaker				
15	Receptacle - Black	EE-1339	1		
16	Receptacle - White	EE-1341	1		
17	Receptacle - Red	EE-1348	1		
18	Plastic Plug	6226	1		
19	Plug - Red	EE-1346	1		
20	Plug - White	EE-1342	1		
21	Plug - Black	EE-1340	1		
22	Ground Lug	EE-1671	1		
23	Tinnerman	4957	7		
24	Transformer	EE-1979	1		

Parts Drawing IE-9673 PL-1462

## SCHEMATIC WIRING



## PICTORIAL WIRING



*Wed 2-24-78*

### WIRING DIAGRAM

A	15AMP BRKR	10-21-77	SWF	CN-77-300	<del>See delete</del>		
CHANGE	WAS ORIGINALLY	DATE	CHK'D	CHG. REQ'D.	NO. REQ'D.	MICROFILM DATA	
TOLERANCE ON DIMENSIONS NOT OTHERWISE SPECIFIED				DECIMAL ±	REMOVE ALL BURRS	MATERIAL _____	
				FRACTIONAL ±	BREAK ALL SHARP		
				ANGULAR ±	MACHINED EDGES		

SCALE	MODEL NO.
DATE 3-25-75	PART NO.
DWN ELS	CHK'D

**WINPOWER MFG. CO.**  
NEWTON, IOWA