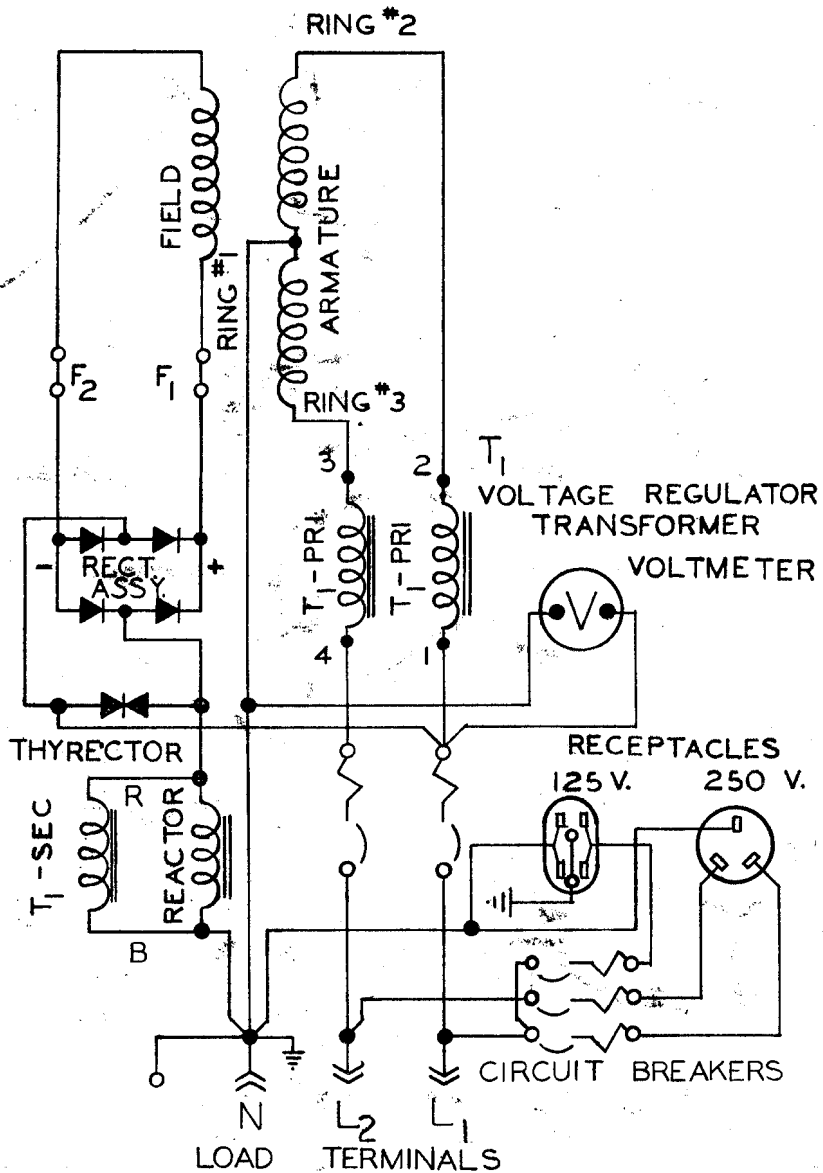
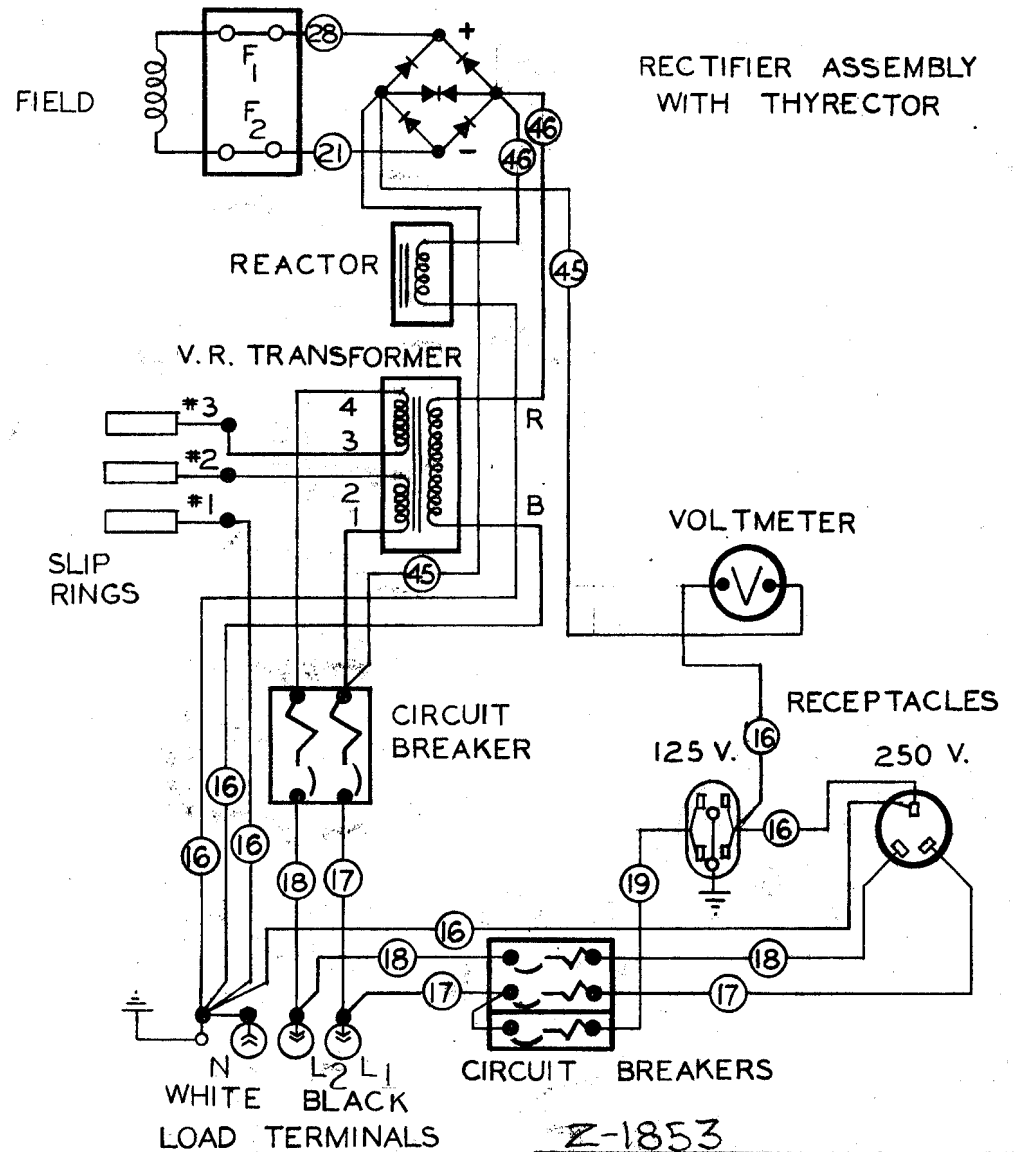


SCHEMATIC WIRING



PICTORIAL WIRING



Z-1853

WIRING DIAGRAM

A	L2 WAS L1 L1 WAS L2	9-18-67	R.L.T			JUL 25 1977	
CHANGE	WAS ORIGINALLY	DATE	CHK'D	CHG. REQUEST			
TOLERANCE ON DIMENSIONS NOT OTHERWISE SPECIFIED				REMOVE ALL BURRS BREAK ALL SHARP MACHINED EDGES	NO. REQ'D.	MICROFILM DATA	JUL 10 1967
DECIMAL ± FRACTIONAL ± ANGULAR ±					MATERIAL		

SCALE	MODEL NO. 8235
DATE 4-6-67	PART NO. IE-7373
DWN M.E.	CHK'D

WINPOWER MFG. CO.
NEWTON, IOWA