

RAB

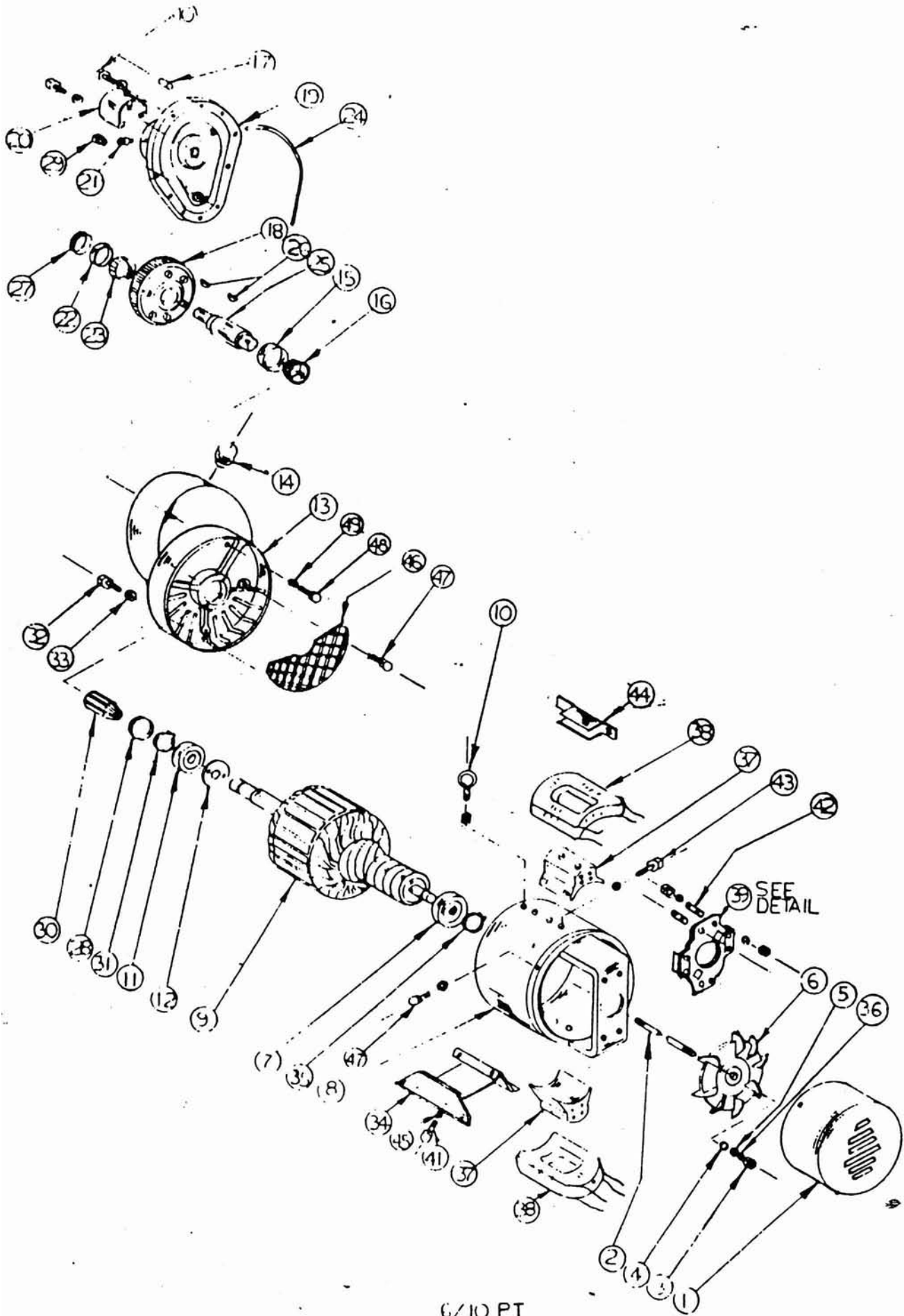
PARTS LIST
10/6PT2

<u>REF. NO.</u>	<u>PART NO.</u>	<u>DESCRIPTION</u>	<u>REQUIRED</u>
1	S-6650	Fan Cover	1
2	S-6648	Stud (Special)	1
3	5783	Nut 5/16 - 24 (Special)	1
4	1184	Washer - Flat	2
5	1115	Washer - Lock	1
6	A-606-1	Fan	1
7	D-8	Bearing - Rear →	1
8	G-5572-1	Field Frame Assembly	1
9	G-5568	Armature Assembly	1
10	S-859	Lift Eye	1
11	D-60	Bearing - Front —	1
12	S-6242	Bearing Retainer	1
13	10-862	Gear Case	1
14	10800	Vent Cap	1
15	D-58-1	Bearing Cap	1
16	D-58	Bearing Cone	1
17	P-20	Jowel Pin	2
18	10-857	Gear - Drive S 8274	1
19	10-859	Gear Case Cover	1
20	G-4770	P.T.O. Shield	1
21	3821.01	Set Screw	1
22	D-27	Bearing Cup	1
23	D-28	Bearing Cone	1
24	X-194	Gasket	1
25	N-538	Shaft - Input	1
26	809	Woodruff Key	2
27	TE-904	Oil Seal	1
28	TE-905	Oil Seal	1
29	9499	Plug	2
30	S-6442	Gear - Pinion	1
31	11110	Retaining Ring	1
32	3553	Screw 5/16 - 18 x 2 Lg.	3
33	1115	Washer - 5/16	3
34	G-5654	Base Assembly	1
35	11107	Retaining Ring	1
36	S-6438	Spring Washer	7
37	G-5567	Field Pole Assembly	2
38	H-1034-2	Field Coil - Shunt Field	1
	H-1034-3	Field Coil - Series Field	1
39	G-5566	Brush Gear Assembly (See Detail)	1
40	3540.01	Screw 5/16 - 18 x 1-1/2	3
41	3576	Screw 3/8 - 16 x 3/4	4
42	S-6647	Stud 5/16 x 24 x 3	4
43	3580	Screw 3/8 - 16 x 1-1/2	6
44	J-570	Coil Shield	4
45	1116	Lockwasher	10
46	S-6638	Screen	1
47	12464	Screw 1/4 - 20 x 5/8	3
48	3557	Screw 5/16 x 18 x 2-1/2	2
49	1054	Nylon Washer	2

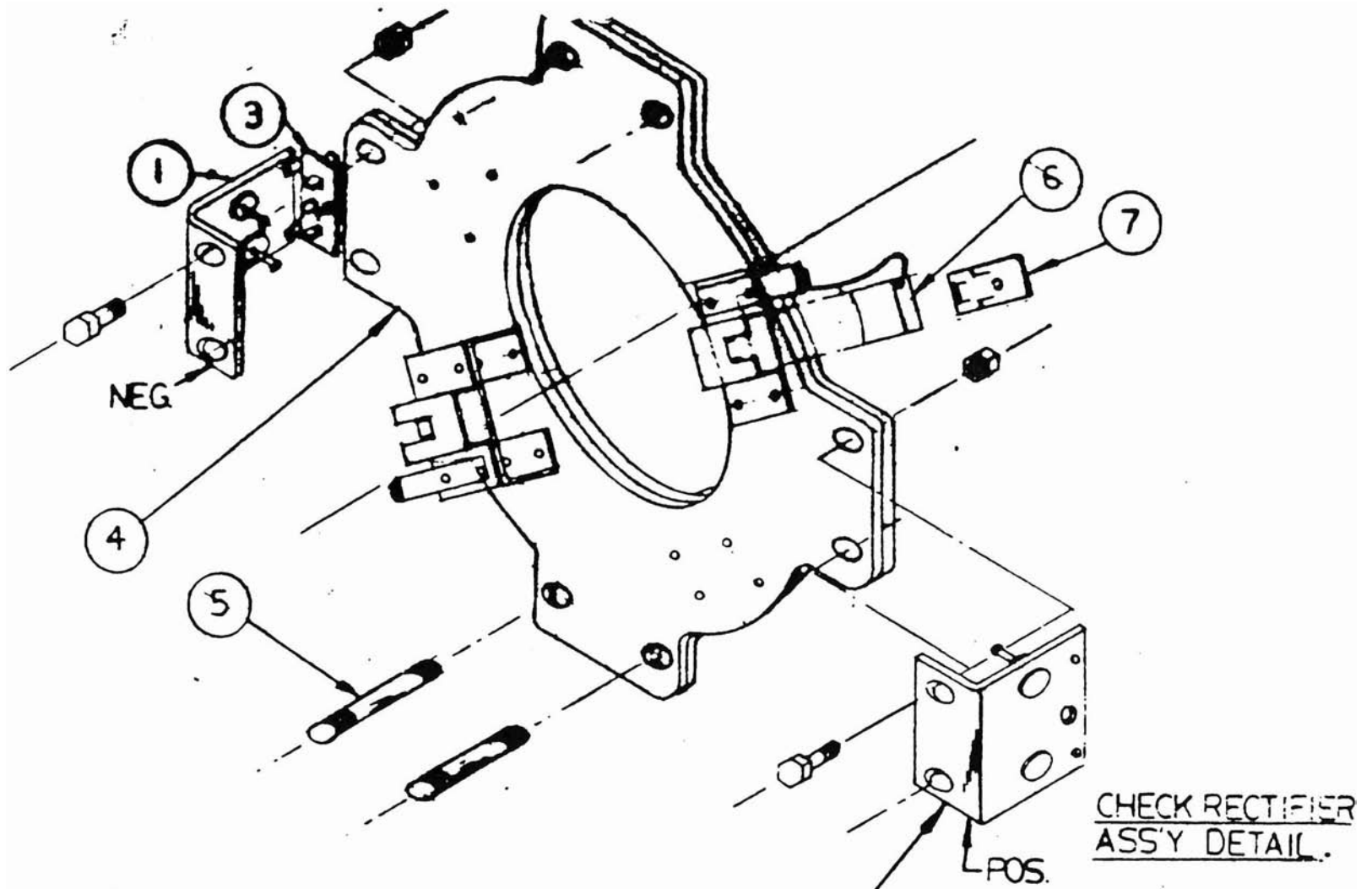
WIRING DIAGRAM

Z-1968 E-7724

10/6 PT2



6/10 PT



BRUSH GEAR AND RECTIFIER ASSEMBLIES

Ref. No.

Description

Part No.

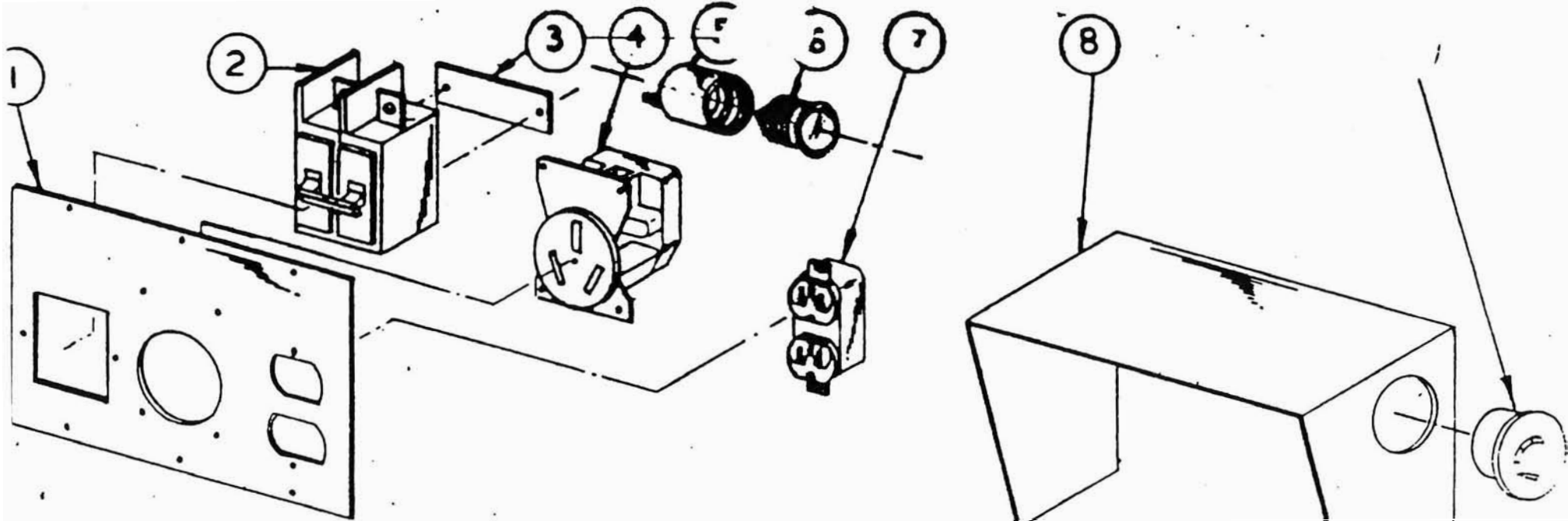
1
2
3
4
5
6
7

Series Field Rectifier Assembly (Neg.)
 Series Field Rectifier Assembly (Pos.)
 Shunt Field Rectifier Assembly
 Brush Gear Assembly Complete
 Stud (Special)
 Brushes
 Springs

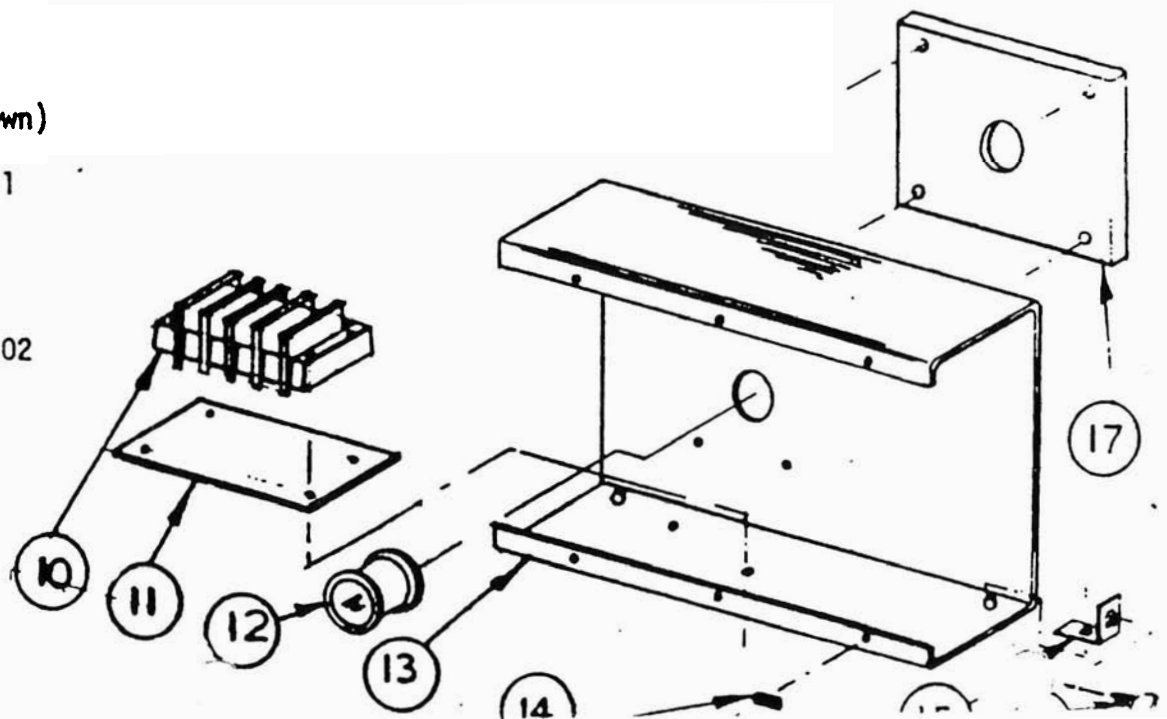
G-5605
 G-5570
 G-5299
 G-5566
 S-6647
 Y-51
 G-3422

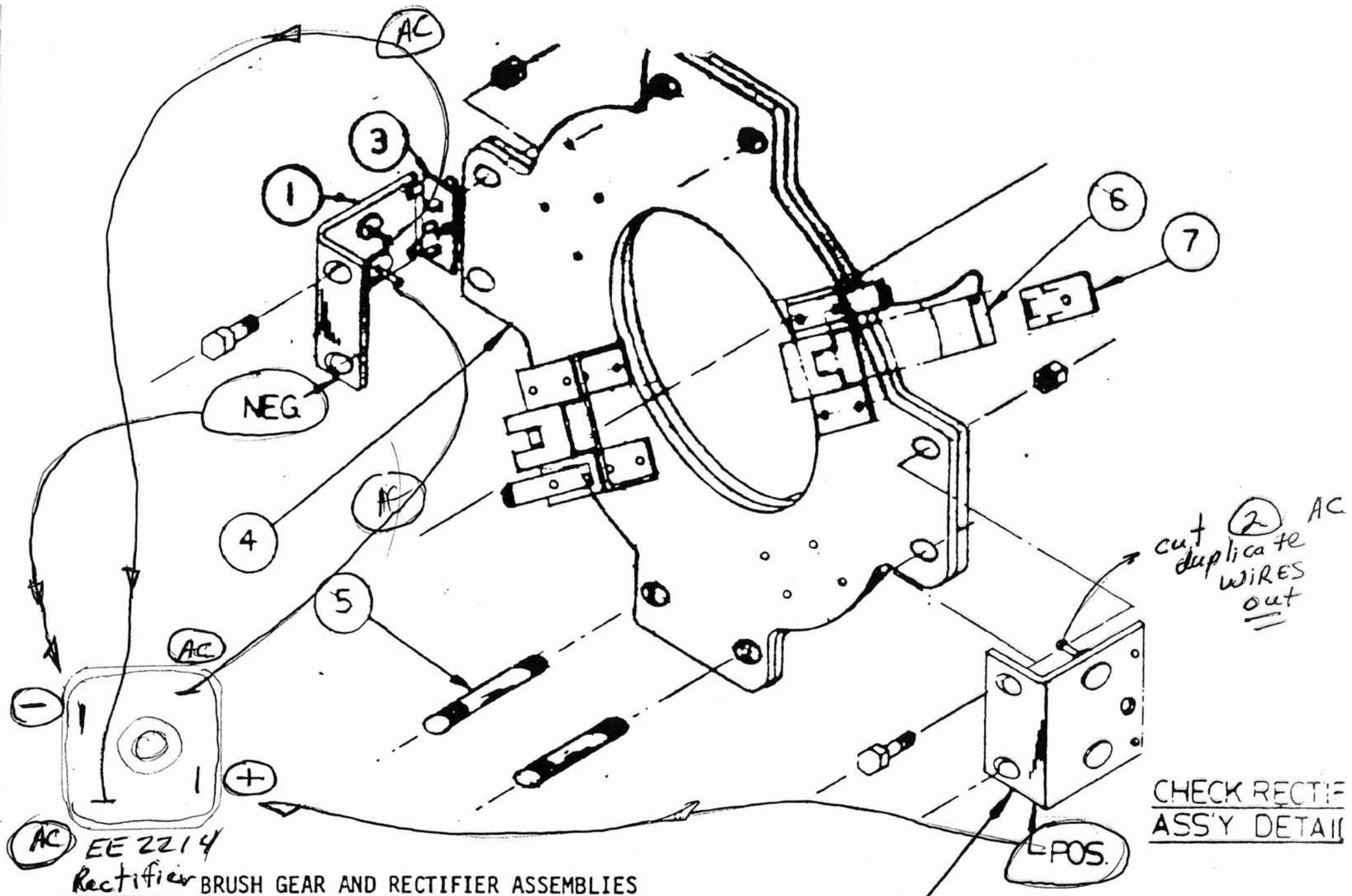
2
 include G-5672 & G-5299
 EE 2148 1
 EE 2149 2
 EE 2133-1

CHECK RECTIFIER
 ASS'Y DETAIL.



Ref. No.	PARTS KEY Description	Part No.
1	Panel Front	S-6326
2	Circuit Breaker	EE-1825
3	Mounting Plate	S-5027
4	Receptacle (240V)	EE-303
4A	Receptacle Cap	EE-360
		(Not shown)
5	Receptacle (Fuse)	EE-448
6	Fuse	EE-447-1
7	Receptacle (120V Duplex)	EE-323
8	Panel Cover	S-6325
9	Voltmeter	VM-59
10	Terminal Board	EE-663
11	Terminal Board Insulator	EE-663.02
12	Grommet	6108
13	Panel Back	S-6425
14	Tinnerman (J Type)	4992
15	Tinnerman (Angle Type)	4955
16	Screw (#8 Type A)	2589
17	Outlet Plate	I-547





Ref. No.

Description

Part No.

1

Series Field Rectifier Assembly (Neg.)

G-5605

2
include G-5672 & C-5299

CHECK RECTIF ASS'Y DETAIL